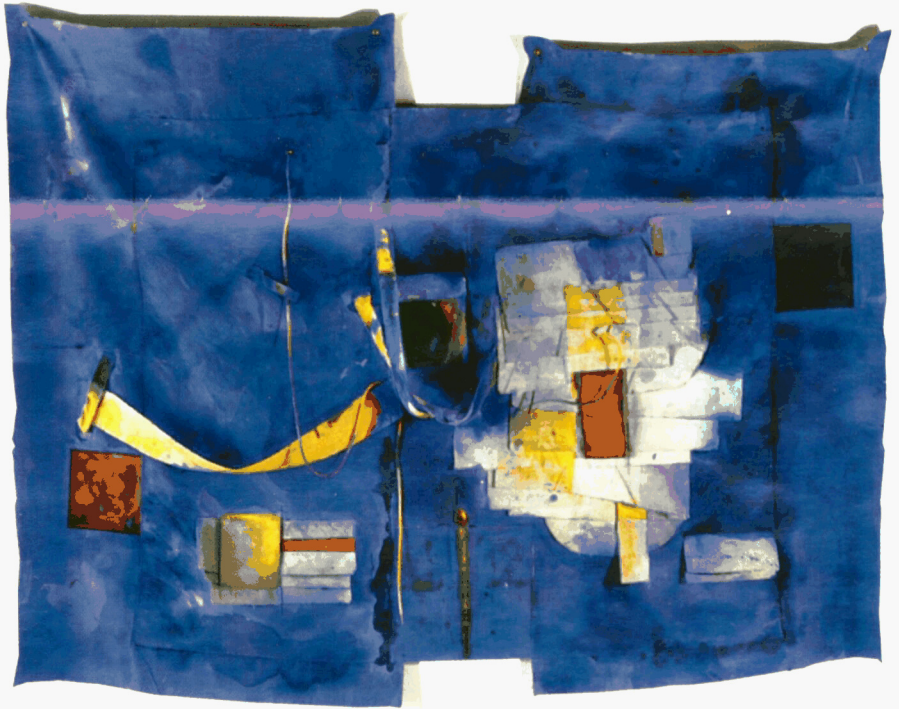


Bulletin

THE ROBERT McDOUGALL ART GALLERY

ISSN 0111-1426

Number 104 October/November 1996



Don Peebles, *Untitled Canvas Relief Painting*, 1996

Director: Tony Preston, Senior Curator: Neil Roberts, Administration: Margaret Grijns, Jenny Barber, Pamela Jarman, Art Annex Curator: Elizabeth Caldwell, Art Annex Supervisor: Simon Mulligan, Conservator: Lynn Campbell, Custodians: Harry Ipenburg, Tiresa Ah-Wong, Education: Ann Betts, Judith Houli, Exhibitions: Spencer Pullon, Gary Collins, Information and Shop: Merilynne Evans, Alexandra Ott, Maintenance: Denise Paulger, Registration: Anna Crighton, Martyn Johns, Technician: Martin Young, Promotions: Amanda Gregan, Weekend Custodians: Merilynne Evans, Dominic Feuchs, Rebecca Jellie, Susan Leckie, John Mottram, Tony Webster, Gwen Searle and Hugh Campbell,

Christchurch City Council



The Robert McDougall Art Gallery
P.O. Box 2626 Christchurch
Fax (03) 365-3942
Telephone (03) 365-0915
Botanic Gardens Christchurch

Don Peebles. The Harmony of Opposites

20 November - 2 February

Christchurch will be the first to see this nationally touring retrospective of one of New Zealand's major abstract artists. Along with Milan Mrkusich and Gordon Walters, Don Peebles is a painter whose approach to painting is essentially abstract and whose works display a consistent pursuit of the subliminal, purely visual statement.

This makes **Don Peebles. The Harmony of Opposites** a particularly interesting exhibition. It will survey Don Peebles' artistic career from his landscapes of the 1950s through to his most recent canvas reliefs, illustrating more than five decades of intensely self-critical, varied and visually rich artmaking.

One of the aims of this exhibition, which has been curated by Justin Paton, is to present the argument for Peebles as a major

figure in post-war New Zealand painting while also examining his place in local painting today. Peebles is clearly a painter whose art has continued to evolve and flourish. He is also a painter whose works illustrate his lack of complacency and his willingness to confront the next challenge. *"I want to be almost totally out of my depth all the time, swimming on the surface, not floating on the top and gradually sinking."*

The title of this exhibition **Don Peebles. The Harmony of Opposites** reflects this artist's major concern. At the core of Don Peebles' work is the interplay between two sets of opposites. Seeking accord between order, intellect and purity, and instinct, gesture and complexity, is his constant challenge. *"A work is never really finished,"* he says, *"but sometimes it reaches a point from which I can go no further."*

This exhibition offers an insight into the creative processes of one abstract artist. A video interview with the artist and a special Process Room with working drawings,

workbooks and maquettes are included to address some misapprehensions about abstract art.

Supported by an excellent catalogue, Don Peebles. **The Harmony of Opposites** opens to the viewer, not just this artist's progress towards the eminent place in New Zealand art which he holds today, but also a study in the emergence, evolution and rejuvenation of abstract art in New Zealand generally.

Peebles was at the coalface of modern painting in Wellington in the '50s, and in this new show we can see how his works of the '80s and '90s place him, not only among the senior New Zealand painters, but label him also as one who continually demonstrates a willingness to renew this innovative and adventurous tradition.

Lectures & Workshops for Don Peebles. **The Harmony of Opposites**

Sunday 24 November 11 am

Justin Paton, art critic and curator of this exhibition

Abstract Art at the End of the Century: A Beautiful Irrelevance.

Venue: Christ's College, Little Theatre Rolleston Ave.

Admission: \$3, students and beneficiaries \$1.

Sunday 1 December 11 am

Don Peebles
A Dip into My Notebooks.

The artist will discuss his philosophies and directions.

Venue: Robert McDougall Art Gallery.

Admission: \$3, students and beneficiaries \$1.
Door sales only.

Please note Due to the constraints of the Gallery space admission will be restricted to 50 persons.

David Low Kiwi Cartoonist on Hitler's Blacklist

12 October - 24 November

David Low, known as one of the most forceful cartoonists of this century and the inventor of Colonel Blimp, was the only artist to be personally entered on Hitler's death list. The essence of Low's direct and perceptive works during the turbulent years around World War II is captured in this exhibition of Low's cartoons. They are being toured by the New Zealand Archives Trust with works on loan from the University of Kent, and the New Zealand High Commission, London.

Low spent most of his formative years in Christchurch watching and sketching the local personalities, observing the passing parade of ideas and opinions, and earning a few pounds sketching the felons in the Magistrates Court for the *New Zealand Truth*. Self-taught he learned, as he said in his 1956 autobiography, "to appreciate the art that lay in the synthesis and emphasis of truth perceived in the living person." At 17 he was a freelance cartoonist for the *Sketcher* and later for the *Spectator*, a satirical Christchurch weekly. He was also sending samples of his work to Australian editors.

In 1911 this initiative paid off when Low was offered a six month contract in the Melbourne office of the *Sydney Bulletin*.

Eight years later he landed a job with the *London Star*, and aged 28 set off on a brilliant international career, a career that was to bring him fame and fortune and the hatred of many of the political leaders he so cuttingly caricatured.



David Low, 30 September 1938.

David Low Kiwi Cartoonist on Hitler's Blacklist features over 40 cartoons dating from 1923 to the 1940s. Like Churchill, with the rise of the Nazi regime Low was convinced of Hitler's war-like intentions and his was a strong voice against appeasement. Low stirred readers from all social classes with his pointed comments and the freshness and directness of his style. To present his deeply felt beliefs he invented numerous new techniques for the cartoon image, taking it from its earlier static image into something much more active and in tune with modern times. It was David Low who developed a number of the identifying 'tabs' like Hitler's toothbrush moustache or Lenin's boots

which have now become indelibly linked with the modern portrayal of those personalities.

Curated and managed by Susan Foster of the New Zealand Cartoon Archive Trust and proudly supported by Brierley Investments Ltd in association with the British Council, **David Low Kiwi Cartoonist on Hitler's Blacklist** is a show not to be missed.

Susan Foster will be visiting Christchurch and will give an illustrated lecture on *David Low: Kiwi cartoonist on Hitler's Blacklist*, at 11 am, on Sunday 20 October in the Conference Room of the Christ's College Library.

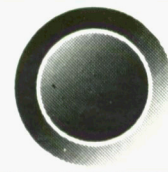
Friends of the Robert McDougall Art Gallery

President—Chris Brocket 355 7133

Vice-President—Mark Stocker 365 3895

Treasurer—Helen-Mary Black 332 7290

Secretary—Ann Watt 379 4055



Speaker of the Month

These functions take place on the third Wednesday each month, commencing at 10.30am with the serving of tea and coffee. The charge is \$1.50 for members, \$2.50 for non-members. Please check the venue for each month.

On **October 16** Dr Ian Lochhead, senior lecturer in art history at the University of Canterbury will give an illustrated lecture entitled "*B W Mountfort - The works 1850 - 1898*". This talk is by popular demand following last year's lecture. This session will be held in the Gallery.

On **20 November** Justin Paton, curator of the Don Peebles retrospective exhibition will speak on "*Don Peebles. The Harmony of Opposites*" in the Arts Centre, Hurst Seager room.

Recent Speakers of the Month

Angela Gorton - The concepts of "The Magic Flute"

On 21 August the Friends were lucky to have the added bonus of an extra speaker when Angela Gorton, the General Manager of Canterbury Opera, brought along set designer, Allan Lees. The forthcoming Canterbury Opera production of the "Magic Flute" marks the tenth anniversary of the company and from Angela's description promises to be a truly magical experience. A model of the stage set was shown and Allan Lees explained the ideas behind his design.

Theatre design is an exacting art requiring a variety of skills from lighting and engineering expertise to a knowledge of fine arts and classical history. Christchurch is fortunate Allan Lees is now based here after being responsible as theatre designer for well over 250 major productions in Australia, Europe and the U.S.A. We look forward to seeing more of his design skills in future and congratulate Canterbury Opera on ten years of first class entertainment.

Keith Wilson - A New Zealand Artist's Travels.

For a period of fifty years, Timaru artist and author of "*A New Zealand Artist's Travels*", Keith Wilson travelled extensively starting with wartime postings with the army in Egypt and Italy. More comfortable journeys followed - to Asia where he worked for ten years, and return trips to Mediterranean Europe and Britain. A sketch book always accompanied him.

A good turn out of Friends braved the mid-winter cold and were treated to a series of amusing and sometimes touching observations of people met and events experienced. The artist's own competent paintings were shown as a reference to many of the anecdotes as Keith Wilson's journeys and exploits were recounted for us with humour and insight.

LocArt Visits October & November

As mentioned in the last issue, Thursday **3 October** features a visit to the studio of Stephen Gleeson. Stephen will outline the historical and contemporary practice of sculptural casting in bronze. The group (maximum 30), will meet at the Limeworks, 249 Moorhouse Avenue, at 2.20 pm. To book (or cancel) please ring the answerphone on 379 4055.

On Wednesday **3 November** Jonathan Mane - Wheoki, senior lecturer in art history, will take a maximum of 20 Friends on a conducted walk to view "*Maori Art in Public Places*" from 10am - 12 noon. Please meet June Goldstein by the statue of Captain Cook in Victoria Square at 9.50am. Please wear comfortable footwear. To book or cancel please ring the answerphone on 379 4055.

On Thursday **28 November**, Pat Unger will show a maximum of 15 Friends around her studio and talk with them about her paintings. Please meet June Goldstein outside 22 Geneagles Terrace, at 2.20 pm. To book (or cancel) please ring the answerphone on 379 4055.

LocArt Visit to the Studios of Robyn Cliffe.

In August the Friends were presented with such a surprising and exciting talk from Robyn Cliffe the couturier and award-winner in the 1994 Benson and Hedges Fashion Awards. Robyn is an enthusiast who revels in her work producing exciting designs for day wear, bridal outfits, waistcoats, not to mention jewellery, veils and exclusive headgear.

Robyn Cliffe trained at a three year course in London and now employs a tailor among her seven very capable staff. Her materials are exquisite, with laces from France, Belgium and Italy, wools from South America, and pure silks from India and Thailand. The Friends visiting Robyn's studio were extremely impressed by her designs and workmanship, the beadwork, applique and ribbon work, and all reported on a particularly delightful studio visit.



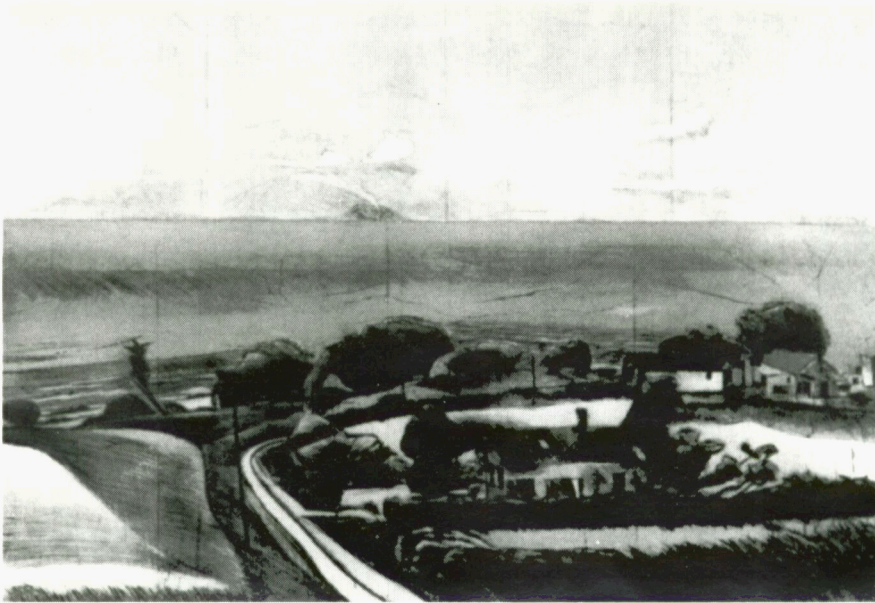
Friends outside Robyn Cliffe's showroom during the August LocArt visit.

New Members

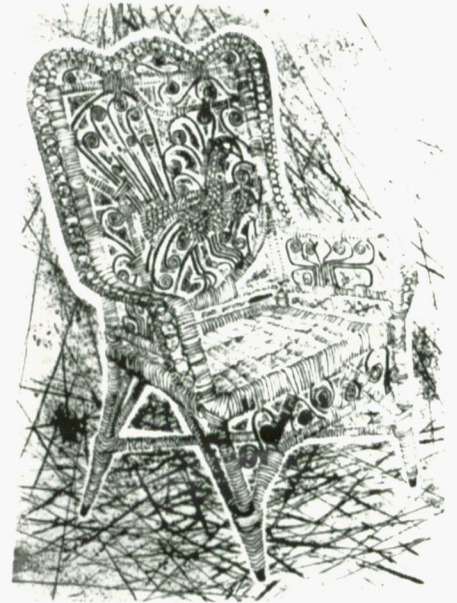
Mrs E Margaret Adams
Colin & Valerie Averill
Jennifer Bertram
Graham & Sheila Dunbar
Mrs J M Foley
Kathryn Hegan
P Boeyen & S Johnston
Mrs Cecily Maccoll
Miss Nancy S B McMillan
Patricia McNamara
Mrs Sylvia Meek

NOTE: Friends Christmas Party, 8 December, 6pm.

This annual celebration may coincide with the opening of a new Elizabeth Kelly Exhibition at the McDougall.



Stanley Palmer, Marae Pabaoa.



Juliet Peter, Cane Chair.

Recent Acquisitions

The following works have recently been acquired for the collection.

Christine Webster

Blood
Cibachrome

Presented by the artist:

Stanley Palmer

Above Te Whanga
Monoprint

Marae Pabaoa

Bamboo engraving and lithograph

Norfolk Farm

Bamboo engraving and lithograph

Old Pohutukawa - Maharani

Bamboo engraving and lithograph

Presented by the artist

Juliet Peter

World of the Night Kiln Firers

Purchased

Juliet Peter

Afterthought - Helen Hitchens - London

Lithograph

Cane Chair

Lithograph

Leo Bensemann

23 untitled ink and pencil drawings
presented by Mrs Mary Bensemann

Rudolf Gopas

Fishing Boats, 1959
woodcut

Edmund Norman

Burkes Pass
pencil drawing

Lake Alexandrina

pencil drawing

Vivienne Mountfort

Life is Like a Long Braided River
flax

Mark Braunias

Cat. No 18. 1996
acetate, ink, twink and shellac

Tour to Dunedin for Masterpieces from the Guggenheim Museum

In April 1997 the Gallery will be organising another of its popular art tours. This time we will be travelling down to Dunedin for an overnight stay and to see the exciting **Masterpieces from the Guggenheim Museum** which is coming to Dunedin. As this will be the only southern hemisphere venue we will organise a trip for the Friends of the McDougall.

The programme will involve two introductory lectures with the Gallery Education Officer, Ann Betts who will also lead the tour. Costs will be announced later but do phone 372 2973 and leave your name if you would like to be contacted with further details in due course.

Art Annex

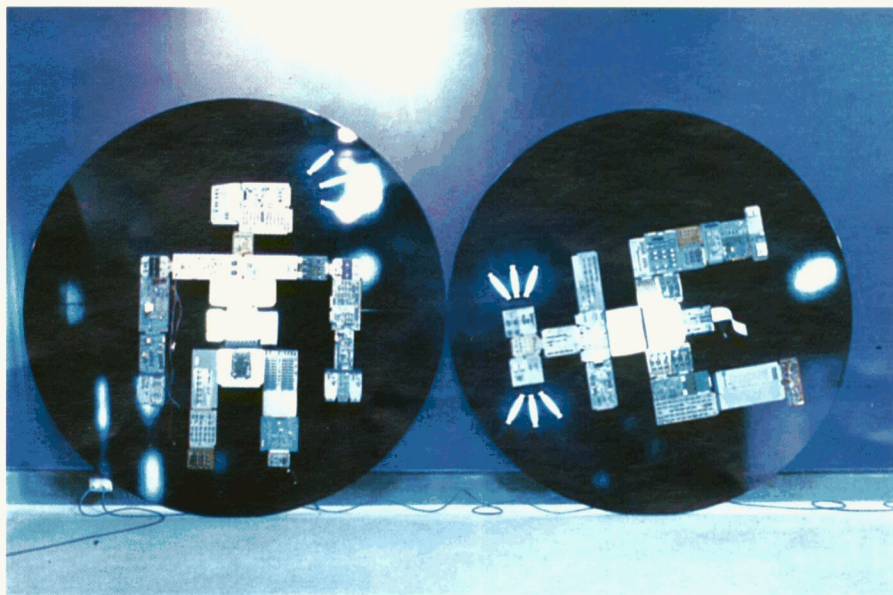
Peter Roche: Tribal Fictions

4 October - 3 November

Born in Auckland in 1957, Peter Roche graduated with a Bachelor of Fine Arts from the Elam School of Fine Arts in 1979. He began his career as a performance artist and between 1979 and 1984 staged twenty five performances (each unique) in collaboration with Linda Buis. For the last eight years Roche has produced kinetic sculpture for installations throughout New Zealand, but recently made a return to more performance-orientated work. In 1993 Roche's work was part of the **Asia Pacific Triennial of Contemporary Art** at the Queensland Art Gallery.

With **Tribal Fictions**, Peter Roche continues an exploration of the relationship between people and machines and the increasingly dominant effect of technology on society. His sculptural creations also allude to the role modern surveillance techniques play in our everyday lives.

The McDougall Annex will be filled with large, highly polished, intensely reflective black enamel discs which lean against the specially painted blue-black walls. The



Peter Roche, Tribal Fictions, 1995.

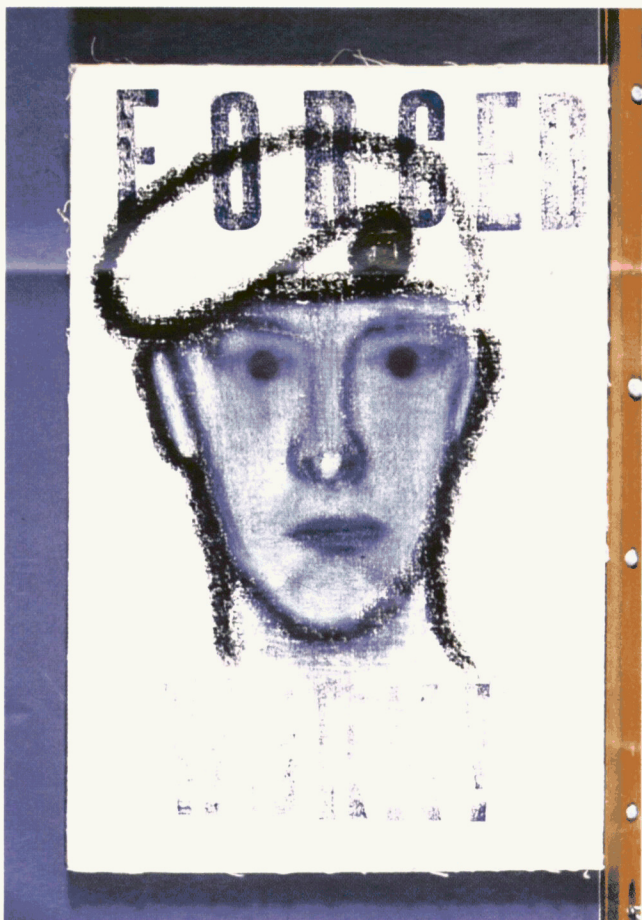
strange emblems and symbols embedded in the discs are made from discarded circuit boards and, lit solely from behind, will glitter like stars in the otherwise dark gallery.

Roche's discs relate to each other in design-like mechanical parts, they interlock and operate together to create a sinisterly dehumanised narrative. Simple in content, sophisticated in execution, the menacing

orbs are the futuristic cave drawings of a society controlled by its technology.

Like giant eyes or lenses, the discs will observe visitors to the Annex from every wall. From the moment of our entry into the Annex space, we are monitored and scrutinised in an ominous, silent vigil in which the viewer becomes the viewed.

Tribal Fictions is proudly supported by Resene Colour Paints..



David Wilson

8 November - 8 December

An international flavour comes to the Art Annex when David Wilson, a visiting lecturer and artist from Tennessee, exhibits next month. The exhibition will be an installation inspired by his travels and experiences in New Zealand, both when he visited the country in 1992, and in the months leading up to this exhibition in Christchurch.

Wilson is an art educator at the University of Tennessee in Knoxville, and has participated in both solo and group shows throughout the United States. In 1992, during a trip to Australia and New Zealand, he held a solo exhibition called **The Uninterrupted Task** at the Experimental Art Foundation in Adelaide.

In previous work, Wilson has employed common, familiar materials such as paper, plastic, string, electrical wire and light bulbs to divide and transform the gallery space, inviting examination, exploration and reflection. His work aims to confront the viewer both physically and psychologically, and he believes that responses to it should not be channelled or directed by external voices: "*I would prefer (my works) remain full of a multiplicity of meanings, full of contradictions and joys of discovery. I want (viewers) to think and reflect on the complicity, interconnection and evaluation of their own lives. They need to bring themselves to the work.*"

Martin Whitworth, Forced Work: Burnham to Bosnia and Back 1996. (A recent acquisition to the collection).

Coming Events

OCTOBER

Exhibitions

- 1 **Hangover** - until 28 October
Works from the Collection - until 23 February 1997
Canterbury Faces and Places - until 13 October
- 4 **Peter Roche - Tribal Fictions.** - until 3 November
- 12 **David Low A New Zealand cartoonist on Hitler's Blacklist** - until 24 November

Events

Gallery Clubs and Art Appreciation programmes

- 2 **Wednesday 1 Club** 10.30am. Art appreciation club meeting
Wednesday 2 Club 1.30pm. Art appreciation club meeting
- 3 **MacClub** 10.30am. Art appreciation club for the disabled or differently abled. New members welcome
- 4 **Friday Club** - 10.30am. Art appreciation club meeting
- 5 **Saturday 1 Club** 10.30am. Art appreciation club meeting
Children's Club 1.30pm. Art appreciation club for children
- 12 **Saturday 2 Club** 10.30am. Art appreciation club meeting
- 21 **Eye Spy 96.** A new course starts this week. For details phone 372 2973

Lectures & Concerts

- 16 **Speaker of the Month** - Dr Ian Lochhead will speak on "*B W Mountfort - the works 1850 - 1898*". 10.30am
- 20 **Lecture** - Susan Foster of the NZ Cartoon Archive Trust will speak on *David Low: Kiwi cartoonist on Hitler's Blacklist*. 11am in the Christ's College Library Conference Room.

Spring Trip Sunday 3 November

A day (9am - 5pm approximately) trip to Ashburton visiting:

The historic and contemporary art collection of Philip and Tommie Munns Trott's Garden and Nursery which was voted in the top 10 in the NZ Listener, art from the contemporary collection of Frames Art Group,

NOVEMBER

Exhibitions

- 1 **David Low: A New Zealand cartoonist on Hitler's Blacklist** - until 24 November
Works from the Collection - until 23 February 1997
Peter Roche - Tribal Fictions at the Annex - until 3 November
- 8 **David Wilson.** At the Annex - until 8 December
- 22 **Don Peebles. The Harmony of Opposites** - until 2 February

Events

Gallery Clubs & Art Appreciation Programmes

- 1 **Friday Club** - 10.30am. Art appreciation club meeting
- 2 **Saturday 1 Club** 10.30 am. Art appreciation club meeting
- 2 **Children's Club** 1.30pm. Art appreciation club meeting for children
- 3 **Friends' Spring Trip.** Bookings essential. Call answerphone 379 4055



Friends Harry Davis, Tony Everist, Patricia MacNamara and Julie Dale visiting Robyn Cliffe's showroom.

Lunch at Ashford's Craft Shop and Cafe, The recently opened Ashburton Art Gallery featuring exhibitions of Folk Art and paintings by Colin Wheeler

Kath von Tunzelman Ashburton watercolourist.

\$35 per member, includes lunch and entry fee to Trott's garden. This promises to be a wonderful day. To book your place call on the answerphone 379 4055.

- 6 **Wednesday 1 Club** 10.30am. Art appreciation club meeting.

Wednesday 2 Club 1.30pm. Art appreciation club meeting.

- 7 **MacClub** 10.30am. Art appreciation club for the disabled or differently abled

- 9 **Saturday 2 Club** 10.30am. Art appreciation club meeting

Lectures & Concerts

- 20 **Speaker of the Month** - Justin Paton, art critic and curator of the Don Peebles exhibition, will speak on "*Don Peebles. The Harmony of Opposites*" in the Arts Centre Hurst Seager Room, 10.30am

- 24 **Lecture** - Justin Paton. *Abstract Art at the End of the Century: A Beautiful Irrelevance*. 11am at the Christ's College Little Theatre. Admission \$3. Beneficiaries & students \$1

- 23 **Concert** - Canterbury Wind Soloists perform at the Gallery, 2.30pm. No charge

Another Eye Spy Art Appreciation Course Starts in October

Those interested in a beginners' level art appreciation course based on the works in the McDougall's collection may like to join the next Eye Spy 96 course starting later in October. The five session course is limited to twelve participants and costs \$25. For further information, or to book a place in Eye Spy 96, please contact the Education Section on 372 2973.