

COMING EXHIBITIONS

PREVIEW

Art in the Heart of Christchurch

AUGUST 1992 169



Gilt Centre Table Louis XV Style Circa 1850



66 Gloucester Street Christchurch Phone 667-261 Fax 667-167

MIXED MEDIA

T

THE 48TH INTERNATIONAL CERAMIC ART COMPETITION

Further information and entry details are available at the Gallery for this competition which is to be held in Faenza, Italy during September and October 1993. The major prize totals some 20,000,000 Lire and two other awards of 5,000,000 and 2,000,000 Lire each will also be presented.

Application forms and slides of potential entries must be at the exhibition venue by 28 November 1992 and selected works must arrive there no later than 30 April 1993.

CSA GUTHREY ART AWARD 1992

Applications are invited for the 1992 CSA Guthrey Travel Art Award. Applications close on October 31.

The object of this award is to enable a promising or established artist to visit and study in Australia.

The Award will take the form of an economy class return air passage from Christchurch to Sydney or Melbourne, accommodation and expenses to a total value of \$1,500.00. The recipient will be required to meet all other expenses and stay in Australia not less than seven days.

Reservations for air travel and accommodation must be made with A. R. Guthrey Travel. To be eligible, applicants must be resident in Canterbury. Entry forms are available at the Gallery, or call Kerry on 667-261.

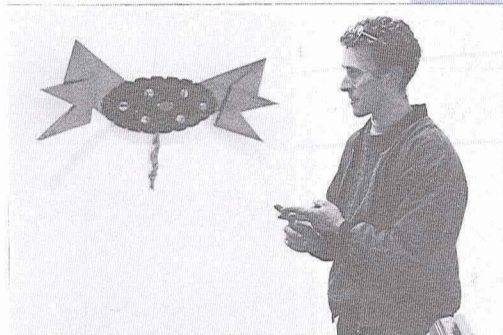
The recipient of the Award will be announced at the Annual General meeting in November. At the AGM, the 1991 recipient, Denise Copeland, will give a slide lecture on her experiences as the 1991 CSA Guthrey Travel Award recipient. The 1992 AGM date will be announced in the issue of PREVIEW published on November 1.

VOGUE

FLOOR TALKS
27 AND 28 JUNE



William McAloon, Joyce Campbell



Simon Endres

SCORPIO BOOKS

For Art & Architecture
Open Seven Days

GALLERY HOURS
Monday-Saturday 10am-5.30pm
Sunday 2pm-5.30pm

ADMISSION
Non-members \$2.00
Students \$1.00
Members Free

One of the largest ranges of drawing equipment, art supplies, stationery, precision draughting equipment, art papers and boards in Christchurch.

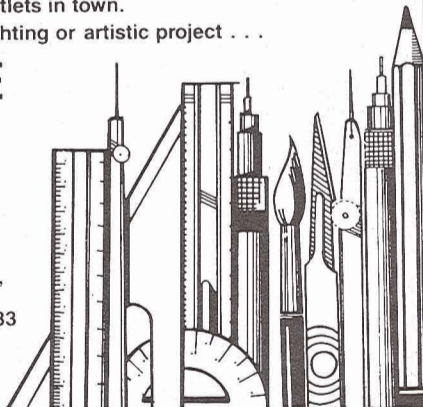
Our extensive range of top brand products together with our backup expertise and service make us one of the most comprehensive outlets in town.

For your next drawing, draughting or artistic project . . .

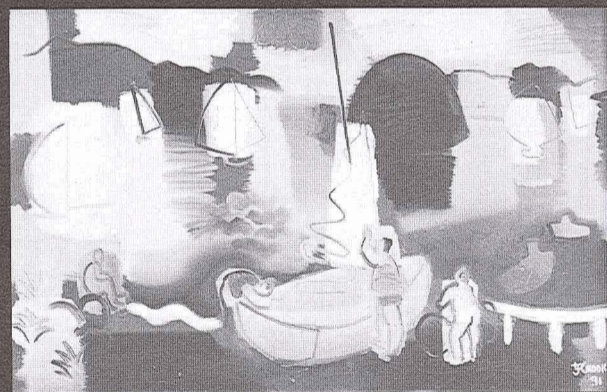
MAKE IT A RULE Lockleys

DRAWING & GRAPHIC SUPPLIES LTD

Cnr Manchester & St Asaph St,
Christchurch
P.O. Box 880, Telephone 660-033



WORK IN STOCK



LINDSAY CROOKS, 'Back Beach yacht Race'



DIANE MILLER, 'Spider Conch Shells'

The Selling Gallery is situated on the ground floor, leading off the Canaday Gallery. If you wish to view or buy an artwork from our extensive stock, talk to Grant Banbury, our gallery consultant, or enquire at reception. Phone (03) 667-261 for an appointment. 66 Gloucester Street, Christchurch. Fax (03) 667-167. We are also happy to sell artworks on your behalf.



FOR THE FINEST IN ART

For well over half a century the famous Italian firm of MAIMERI have produced an unsurpassed collection of Fine Art materials for Europe's most discerning artists. Their superb colour ranges of oils, watercolours, acrylic and designers gouache include specialist restorer colours and pigments. -these are complimented by MAIMERI's manikins, palettes, painting knives, varnishes and mediums as well as the matchless range of Fabriano watercolour blocks. In addition MAIMERI make no less than 25 different easels - field, table, studio and box models, each made with care and craftsmanship. This famous range is now available to artists throughout New Zealand direct from the NZ Agents.

brush-n-palette

Artists Supplies Limited

134 Oxford Terrace Christchurch 1 Telephone 663-088

SMITHS BOOKSHOP

Wide Selection of New Zealand and International Art books

Out of Print, book search and title request services.

Catalogues issued.

General literature and reference books.

New Zealand fact and fiction.

133 Manchester Street, Christchurch 1. Phone (03) 797-976



CANTERBURY'S FINEST ART BOOK EMPORIUM

ABRADALE, ABRAMS, APERTURE, KNOPF, KODANSHA, LITTLE BROWN, RIZZOLI, TWELVETREES, TWIN PALMS, WATSON-GUPTILL, WEIDENFELD & NICOLSON, THAMES & HUDSON

UNIVERSITY BOOKSHOP

Mon-Fri 8.30 a.m.-5.30 p.m., Sat 10 a.m.-3 p.m.

Private Bag
Christchurch

University Drive
Btwn Clyde & Ilam Rds

Phone 348-8579
Fax 348-8851

AUGUST

MON	TUES	WED	THURS	FRI	SAT	SUN
31					1	2
3	4 <i>C.S.A. previews 8pm</i>	5	6	7	8	9
10	11	12	13	14	15 <i>C.S.A. Sharp Art Party! 8pm</i>	16
17	18	19	20	21	22	23
24	25 <i>C.S.A. previews 8pm</i>	26	27	28	29	30

Coming Exhibitions

5-12 AUGUST 1992 PREVIEWS TUESDAY 4 AUGUST 8PM



Shaun Murphy 1992

Shaun Murphy

FLOWERS

An exhibition which focuses on a traditional theme in painting and drawing which has had an infinite number of interpretations. Invited local artists present works which reflect their response to this popular subject. With spring just around the corner, these flowers will lift your spirits. It is a marvellous opportunity to buy a painting by a well known artist of this ever popular subject.

Note that this exhibition will run for only 9 days to allow for the CSA Sharp Art Party to be set up.

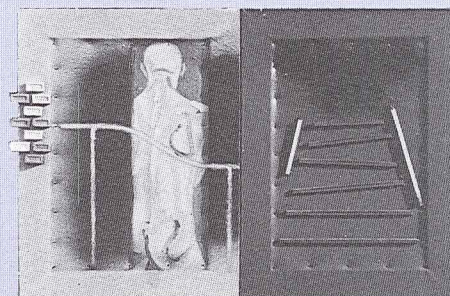
SHAUN MURPHY

This series has evolved from artistic endeavours in Osaka, Japan as both a solo artist and as a collaborator with Christchurch artist Peter Gilmore and "Selective Service System"; an artists' collective of multi-media, radical sound and performance art.

My collages were the only non-commissioned artwork where I indulged in a mental sanctuary of images representative of, but apart from, the hectic nightclub scene I was involved in. When I left Japan and travelled throughout South East Asia, I continued to collect esoteric images and ideas which culminated in the series "... To Have Touched the Machine Age Paradigm" here in Christchurch. My drawings entitled: "Choleric Bath" are concentrated upon an essence or a feeling that evokes the question "Why make art ... for the eye or for the sale?"

MARTIN WHITWORTH

RECENT WORKS
Mixed media painting



PERCEPTIONS

Perceptions is an exhibition of photographic works by past and present students of Papanui High School.



Elizabeth Stevens, 'Unfurling'



Perceptions — Belinda McCann, Untitled

The title reflects the diverse approaches taken to technique and content by each of the exhibitors and attempts to portray both a variety of genres and individual insights.

SATURDAY 15 AUGUST 1992 8.00PM UNTIL LATE

The Sharp Art Party

All galleries at the CSA except for the Selling Gallery will be closed from Thursday August 12. This is to allow for the setting up for the Sharp Art Party which will involve a creative and surprising decoration of the whole gallery.

Tickets are already selling with many members making up parties. Members receive a 10% discount on all ticket purchases of course!

There is a limit on how many we can sell so be in quick. A brochure for ticket orders is enclosed with this issue.

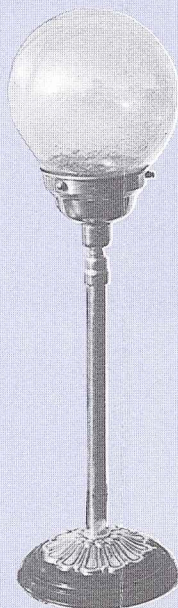
If it's gone just call into reception or phone Kerry on 667-261.

The Sharp Art Party will put the balls to shame. Be there or be bald!

26 AUGUST-27 SEPTEMBER 1992 PREVIEWS TUESDAY 25 AUGUST 8PM

TABLES & Lamps

Tables and Lamps is one of the gallery's major theme shows for 1992 and follows on from the very successful Chair Show of last year. That



exhibition achieved high audience attendance, excellent media coverage and stimulated people's awareness of the variety of design and function possibilities of the chair. The sheer diversity of materials utilised and innovative layout created a memorable event.

Tables and Lamps will fill the Mair, North and Print galleries with an exciting range of tables and lamps which artists, craftspeople and designers have submitted from all over the country. Plastic, metal, glass, found objects and the more traditional timber will be transformed into finished pieces. Old and antique items will be included to highlight historical placement in furniture development although the emphasis will

be on contemporary New Zealand design. The Lamps component (both table and standard) will add a strong mood of subtle lighting to the often austere gallery environment. Most of these will come from the commercial sector — both New Zealand made and imported. In addition, selected 'art and craft items' will rest on some of the tables and 'suspended light constructions' will make innovative use of the pyramid ceiling in the Mair Gallery.

To date twenty five craftspeople, designers and artists have agreed to present work, most of which will be for sale.

Exhibition concept, design and installation — Grant Banbury