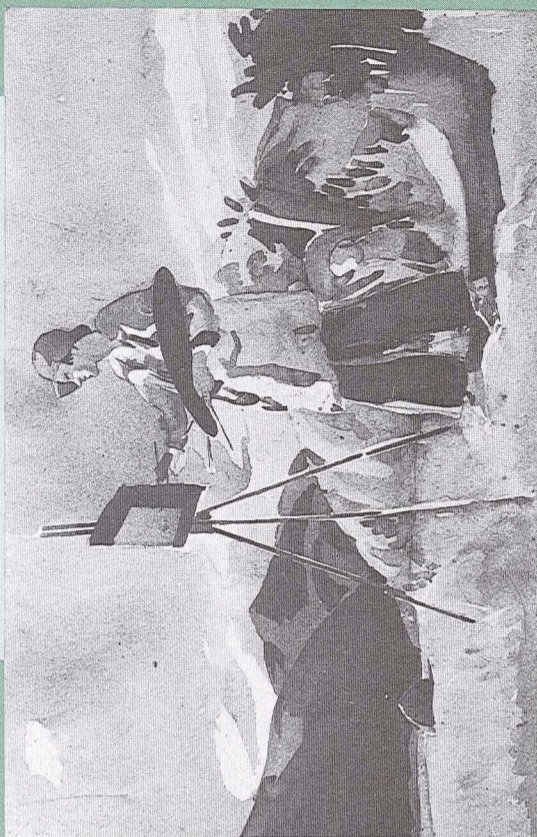


COMING EXHIBITIONS

PREVIEW

Art in the Heart of Christchurch

JULY 1993 178



Olivia Spencer Bower — Ngaito Marsh Painting, watercolour



66 Gloucester Street Christchurch Phone 366-7261 Fax 366-7167

members
NEW

Lorraine and Trevor Polglase
Christopher Blair
Marie-Claude Hay
Yeung Yun Hung
Alexandra Kennedy
Mrs J Pinchin
Mr Hitchcock

MIXED MEDIA

NEW
ART AWARD

The Sarjeant Gallery Trust Board has announced the 'Lilian Ida Smith Awards' to assist people aged 35 years and over and resident in New Zealand to develop and further their interest in the ART OF PAINTING. This award will be offered once every three years, with a total of \$10,000 being available to one or more applicants selected on the strengths of their proposal. Applications must be received by the Sarjeant Gallery before 15 October, 1993.

For further details and application forms contact:
Sarjeant Gallery
P O Box 998
WANGANUI

MONEY EXPO 1993

A new event for the CSA to participate in was the South Island Money Expo held at the Christchurch Town Hall on the 12th and 13th of June. As a non profit organisation promoting the visual arts in Canterbury we were fortunate to obtain a booth at no cost. Amongst the Financial Planners, Banks etc, we provided a welcome respite where we could offer 'Investments that can be ENJOYED as they GROW'.

1993 YOUNG ACHIEVERS FOUNDATION
Applications are now being sought for the 1993 TVNZ Young Achievers Awards. The Foundation seeks to reward and encourage talented young New Zealanders by giving financial support at an important time in their careers. It is hoped that every young New Zealander with the talent and determination to succeed will have a chance to apply for an award. Applicants must be New Zealand citizens who are aged 13-23 on August 31, 1993. Application forms are available from TVNZ, and all branches of AGC and the Westpac Bank. Applications close 15 July.

DRAWING AWARD


The Cranleigh Barton Drawing Award 1993 is an invitation to New Zealand artists to enter for an award celebrating the fine art of the drawing. To recognise excellence in drawing, and to raise the status of this skill in visual arts education and practice, \$2,000 is to be awarded for a drawing judged to have the greatest merit, communicating through drawing an informed and original visual sensibility. Application forms and details available from the CSA.

Closing date for entries: Friday 16 July.

WORKING MEMBERS GALLERY

Have you been in to see the new Working Members Gallery on the mezzanine floor yet? With on-going thematic exhibitions exploring varied and colourful subjects, the Gallery has proved extremely successful. Do make a point of having a look next time you're in.

Gallery Hours
Monday - Friday 10am - 5.30pm
Saturday - Sunday 2pm - 5.30pm



- * ART and PHOTOGRAPHY books.
- * MUSIC for the ears.
- * LITERATURE.
- * MAGAZINES.
- * Film Processing
- * Discount BOOK and MUSIC CLUBS.

UNIVERSITY BOOKSHOP

lockley's is often called an

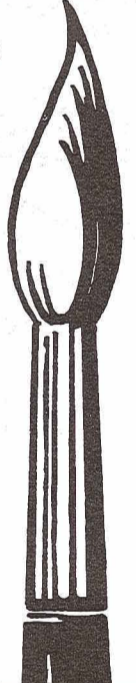

Artist's Haven

A Complete Range of Artist's Supplies. Stockists of Windsor & Newton Artists Materials.


Lockleys

DRAWING & GRAPHIC SUPPLIES LTD

Cnr Manchester & St Asaph St
P.O. Box 880, Christchurch. Phone 366 0033
Open Friday until 8pm & Saturday Mornings.

SELLING GALLERY
WORK IN STOCK



AUSTEN DEANS — Mt Tapuaenuku
Oil on canvas \$2,675

A selection of stock from the Selling Gallery is on display in the Front Gallery, on the ground floor leading off the Canaday Gallery. This display is changed every few weeks.

All Artworks displayed in the Selling Gallery are for sale. Members receive a 10% discount on any purchase. Works can be taken home with no obligation.

If you have any enquiries please feel free to call
Joan Gabara on 366 7261 or 366 7167.
After hours: Joan Gabara 355 4780.

THE School for Scandal

From 19th June

Book Now
366 6992

In association with
TRUST BANK
CANTERBURY




Court Theatre
CANTERBURY'S PROFESSIONAL COMPANY



FOR THE
FINEST
IN ART

For well over half a century the famous Italian firm of MAIMERI have produced an unsurpassed collection of Fine Art materials for Europe's most discerning artists. Their superb colour ranges of oils, watercolours, acrylic and designers gouache include specialist restorer colours and pigments. -these are complimented by MAIMERI's manakins, palettes, painting knives, varnishes and mediums as well as the matchless range of Fabriano watercolour blocks. In addition MAIMERI make no less than 25 different easels - field, table, studio and box models, each made with care and craftsmanship. This famous range is now available to artists throughout New Zealand direct from the NZ Agents.

brush-n-palette

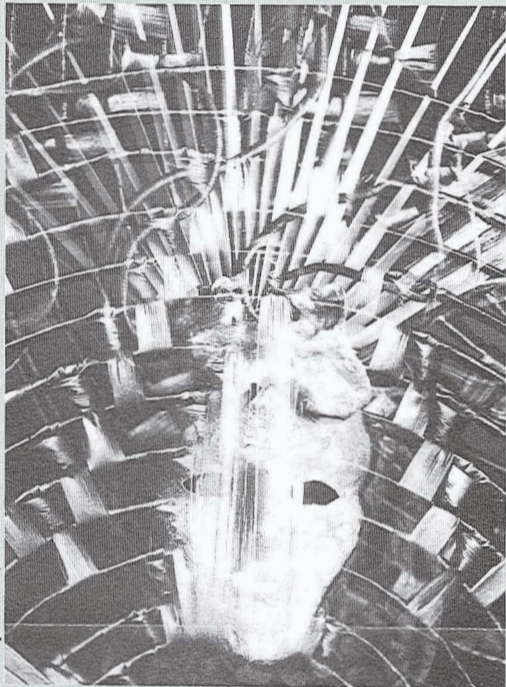
Artists Supplies Limited

134 Oxford Terrace Christchurch 1 Telephone 663-088

MON	TUES	WED	THURS	FRI	SAT	SUN
5	6 ^{5.30 PM} CSA Preview	7	1	2	3	4
12	13	14	8	9	10	11
19	20 ^{5.30 PM} CSA Preview	21	15	16	17	18
26	27 ^{5.30 PM} CSA Preview	28	22	23	24	25
			29	30	31	

Coming Exhibitions

6-18 JULY 1993 PREVIEW TUESDAY 6 JULY 5.30PM



Lesley Sales, The Brazen Head

LESLEY SALES AND ANNETTE ROSE

THE BRAZEN HEAD

An exhibition of contemporary maskmaking and special effects photography.

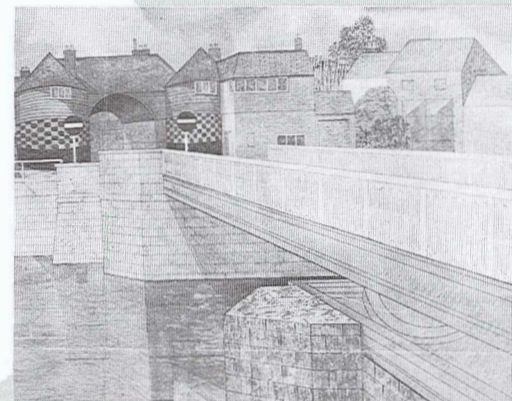
Using papier mache and other materials, maskmaker Annette Rose explores the symbols, myths and stories which once powerfully sustained community living. "Global colonisation has collapsed the structures of indigenous Culture — the 'family of the family' — claiming along with it the treasured instinct. Contemporary maskmaking is about reassembly of that injured instinct." Lesley Sales has photographed the masks using experimental multiple exposure techniques to create layered images. Elements of the photograph fade into each other, entwine and overlap, creating a tension that hints at the unknown, archetypal, mysterious.

The Brazen Head gives voice to the unknown, face to the unseen, form to the formless. These are images of power, beauty and enchantment — dangerous images...

MAURICE ASKEW

ENGLISH LANDSCAPES - SECOND SERIES

Following last years exhibition at the CSA of English watercolours, this collection concludes work completed from notes and sketches made in England during 1990. The images are of Yorkshire, Kent, Sussex and the Isles of Wight.



Maurice Askew, The Barbican, Sandwich, Kent

6-25 JULY 1993 PREVIEW TUESDAY 6 JULY 5.30PM

AMANDA HARPER

SUBURBS

Amanda has in the last few years, used mainly oil pastels in her work. This helps her achieve the rich intense colours that she loves to produce shown in this exhibition reflecting the elements of hills, tightly packed with houses and bush, both of which can be seen in the suburbs of Wellington and Dunedin.

Amanda is a 29 year old Wellington artist originally from Dunedin where she graduated from Otago Polytechnic School of Art in 1984.



Amanda Harper

CSA ANNUAL OPEN EXHIBITION

ASSOCIATE MEMBERS SHOW

Contributions from our Associate members have been invited for the Open Exhibition. The Artist's committee of the CSA Council will select the works to be exhibited, and new Working Members will then be chosen from the pieces in this exhibition.

20 JULY-1 AUGUST 1993 PREVIEW TUESDAY 20 JULY 5.30PM

MAURI ANGELO

UN' ODISSEA SICILIANA

Mauri Angelo is a painter and Landscape Architect and has exhibited paintings at the CSA for the past 30 years. His love of the McKenzie Country is well known, and his paintings usually reflect his feelings and thoughts for this aspect of New Zealand. Two years ago he and his wife Liz spent some time living in the South of Italy. This exhibition is dedicated to that time, and to the people and experiences they encountered.

"The Sicilian or Greek origins of Homer's Odessey is the stuff for scholars to do battle over. I predict no conclusion to this argument, but prefer to think of Homer in Sicily.

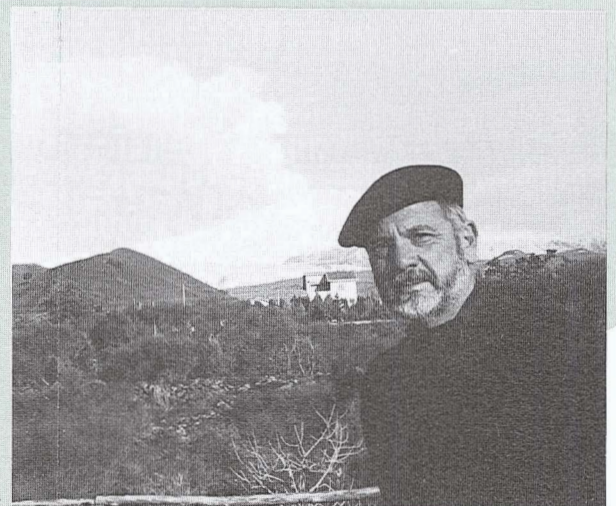
Living on the sides of the rumbling Mt Etna can bring the horrors of the cave of the one eyed cyclope into sharp focus. At Acireale the rocky

boulders that Polyphemus hurled at Odysseus stand in mute testimony to the giant's anger. "The wine dark sea" gurgles with the spirits of Scylla and Charybdis, and for me the "river of the ocean" can only surge through the Straits of Messina.

For me waking each day to a "fresh dawn with her crimson fingers lighting the sky", Sicily slowly unfolded her treasures. Jewels of the landscape and tapestries of culture.

This series of work brings some order to my responses to my emersion in the warm "riunione" with the land and people of Sicily."

Maurie Angelo, Mt Etna, Sicily



27 JULY-15 AUGUST 1993 PREVIEW TUESDAY 27 JULY 5.30PM

OLIVIA SPENCER BOWER

A CELEBRATION

This exhibition consists of a selection of works from the Olivia Spencer Bower Foundation Collection, and has been curated to celebrate the art of Olivia Spencer Bower in the centennial year of women's suffrage in New Zealand.

It is a small show featuring twenty watercolours and drawings representing keynotes in Olivia's life: her environment, family and friends, and

travels to Italy, the Pacific Islands and within New Zealand. The works show aspects of women's lives and range from the sagacious to the airily delightful and always reflect the perceptive eye of this much respected artist.

WORKING MEMBERS

STILL LIFE

An exhibition of classic still lives, aspects of interiors, constructions etc.