

PREVIEW

Art in the Heart of Christchurch

NOVEMBER 1993 182



ESTHER HOPE — "Returning from Church — Brittany"



66 Gloucester Street Christchurch Phone 366-7261 Fax 366-7167

members
NEW

Alison Ramsay
Anna Pascoe
Robert McCall

MIXED MEDIA **A** 113TH ANNUAL GENERAL MEETING

113th ANNUAL GENERAL MEETING of Society members will be held at the CSA Gallery, 66 Gloucester Street, Christchurch, at 7.45pm, Tuesday 30 November 1993. After the formal business, there will be a talk with slides by Grant Tackle, the 1992 recipient of the CSA-Guthrey Award.

STUDIO ART SCHOOL

The Studio Art School offers a 3 year diploma course. It opened in 1990, and this year sees its first graduates. Graduate shows will be held over the next three months. Enrolments close for 1994 on 15 November. Weekend Painting Course: One of the schools regular tutors, Joanna Braithwaite, will be taking a painting workshop in November. Information and enrolment forms from Margaret Egan, 03 325 5717 or from P O Box 22107, Christchurch.

SHARP ART PARTY 2

Our annual Sharp Art Party extravaganza was a great success again this year. The galleries underwent an amazing transformation and 350 people danced and drank the night away. Our thanks to the Gallery staff and Ball committee for the tremendous amount of work required to stage such a spectacular event!

BANNERS FOR THE CSA GALLERY

The Gallery is to proceed with the installation of four banners to be located at the front of the building. For this project we have received assistance from the Southern Regional Arts Council. These banners should greatly enhance the appearance of the Gallery, and help advertise it's locality more effectively in this part of town.

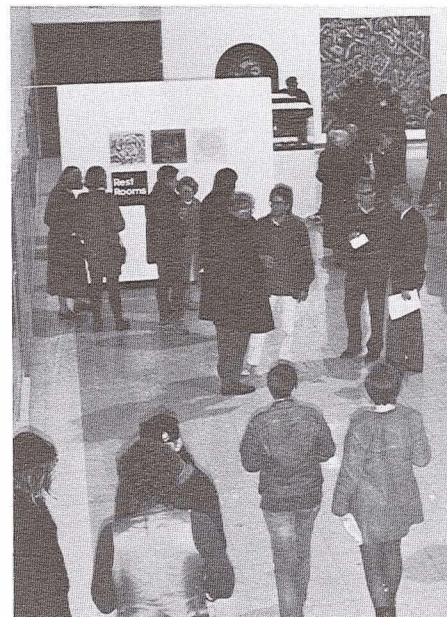


IMAGE AND ISSUE

Our recent Presidents Exhibition for 1993, 'Image and Issue', was extremely well received, and was generally thought to be one of the more worthwhile exhibitions celebrating Suffrage year, in Christchurch. A good crowd of people attended the opening to view the collection of art by women associated with the CSA over the years.

Gallery Hours
Monday - Friday 10AM - 5.30PM
Saturday - Sunday 2PM - 5.30PM

- * ART and PHOTOGRAPHY books.
- * MUSIC for the ears.
- * LITERATURE.
- * MAGAZINES.
- * Film Processing
- * Discount BOOK and MUSIC CLUBS.

UNIVERSITY BOOKSHOP

Lockley's is often called an
Artist's Haven

A Complete Range of Artist's Supplies. Stockists of Winsor & Newton Artists Materials.

Lockleys
DRAWING & GRAPHIC SUPPLIES LTD

Cnr Manchester & St Asaph St
P.O. Box 880, Christchurch. Phone 366 0033
Open Friday until 6pm & Saturday Mornings.

SELLING GALLERY
WORK IN STOCK

JOHN RUNDLE 'The Dart Valley'
Oil \$900.00

The Selling Gallery has just acquired five John Rundle paintings—two oils and three watercolours.

Two of the watercolours are featured in the new book 'The Mountains of the South' which has just been published.

A selection of stock from the Selling Gallery is on display in the Front Gallery, on the ground floor leading off the Canaday Gallery. This display is changed every few weeks.

All Artworks displayed in the Selling Gallery are for sale. Members receive a 10% discount on any purchase. Works can be taken home with no obligation.

The Selling Gallery Consultant Joan Gabara is available to advise on purchasing art for home or office.

If you have any enquiries please feel free to call Joan Gabara on 366 7261 or 366 7167. After hours: Joan Gabara 355 4780.



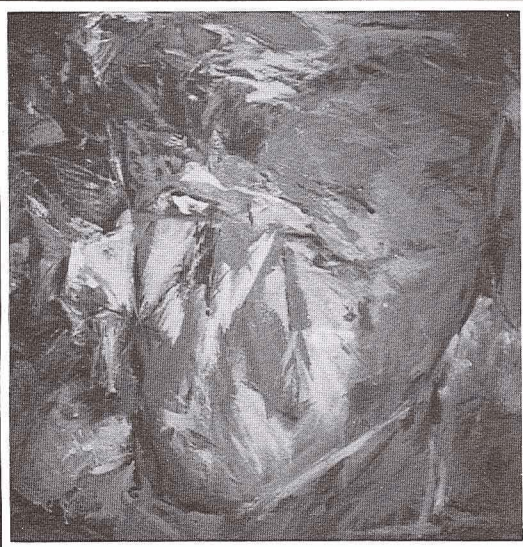
**FOR THE
FINEST
IN ART**

For well over half a century the famous Italian firm of MAIMERI have produced an unsurpassed collection of Fine Art materials for Europe's most discerning artists. Their superb colour ranges of oils, watercolours, acrylic and designers gouache include specialist restorer colours and pigments. -these are complimented by MAIMERI's manakins, palettes, painting knives, varnishes and mediums as well as the aqua gloss acrylic colours. In addition MAIMERI make no less than 25 different easels - field, table, studio and box models, each made with care and craftsmanship. This famous range is now available to artists throughout New Zealand direct from the NZ Agents.

brush-n-palette

Artists Supplies Limited

134 Oxford Terrace Christchurch 1 Telephone 366-3088



ROSS GRAY "Strange Days",
acrylic on canvas \$800.00

NOVEMBER

MON	TUES	WED	THURS	FRI	SAT	SUN
1	2 <i>Preview C.S.A. Gallery</i>	3	4	5	6	7
8	9 <i>Preview C.S.A. Gallery</i>	10	11	12	13	14
15	16	17	18	19	20	21
22	23	24	25	26	27	28
29	30					

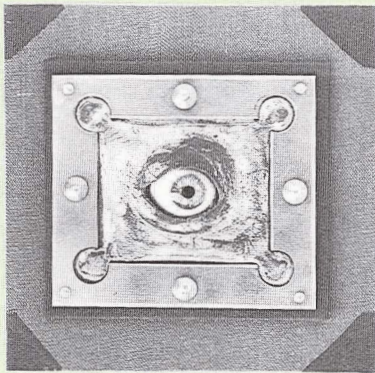
Coming Exhibitions

2-7 NOVEMBER 1993 PREVIEW TUESDAY 2 NOVEMBER 5.30PM

ART AND DESIGN DEPARTMENT STUDENTS CHRISTCHURCH POLYTECHNIC

'Eyeball' is back again this year with a larger and wider range of exhibits. It is of course, the annual exhibition of design work by graduating students of Christchurch Polytechnic's School of Art and Design.

The exhibition is a celebration of the intellect and creativity in design; the fine control of the hand; the command over technology and the potential and freshness that young designers bring to their



field. In their final year their exhibitors have specialised in graphic design, a range of craft work in textiles, metals, stone and clay, commercial illustration, 3D design and printmaking. These produce a show of stunning variety, excellence and flair which will delight and surprise anyone uninitiated in the work of the art and design courses.

A special feature this year will be the first exhibition of images from graduates of the new Professional Photography course, in addition to the thirty-three from the diplomas of Craft Design and Visual Communication Design.

9-21 NOVEMBER 1993 PREVIEW TUESDAY 9 NOVEMBER 5.30PM

VIGNETTES AND RECOLLECTIONS

WORKS ON PAPER
BY MICHAEL DELL
AND CHING FEN

Michael Dell-Lithographs and Woodblocks
"The traces and remains of human activity within the domestic environment provide the basis for these vignettes. By visually using waste, remains and the physical residue of human activity (coffee), I attempt to fuse the existence of life with the print aesthetic."

Ching Fen-Monoprints
"Human beings have photographic minds and our memories store countless images. Sometimes we cannot explain particular images that have been stored. Yet I am certain there are reasons for recurring dreams and experiences. By reconnecting those images from my own experience, I hope to discover something new about myself."

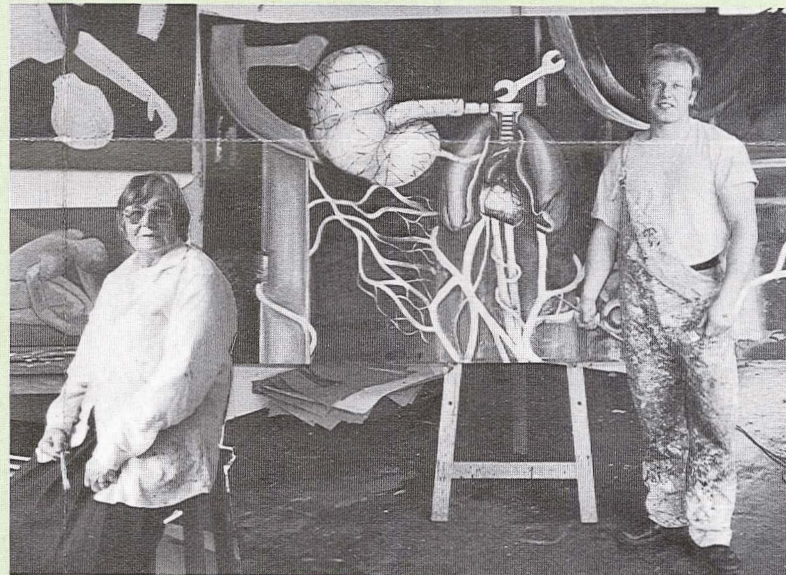
ETHEL GLUBB AND DAVID BENJAMIN

PAINTINGS 1993

This is an exhibition of paintings by two final year students from the Studio Art School. Davis Benjamin's paintings deal with the hard and soft quality of metal and tissue, and hence man's relationship with machine.

Ethel Glubb's works deal with figures manipulated to show varying aspects of the human condition.

This will be an interesting exhibition as both Ethel and David work in a traditional painterly manner while approaching challenging subject matter.



Ethel Glubb and David Benjamin

9-28 NOVEMBER 1993 PREVIEW TUESDAY 9 NOVEMBER 5.30PM



Mike Glover
Tanya Sinclair
Rodger McLauchlan

SPACES IN BETWEEN

TANYA SINCLAIR,
MIKE GLOVER,
RODGER MCLAUHLAN

'Spaces in Between' defines a tension between each work and each artist and the various mediums used.

The disciplines of printing, sculpture and painting are explored in this diverse exhibition.

9 NOVEMBER-5 DECEMBER 1993 PREVIEW TUESDAY 9 NOVEMBER 5.30PM

ESTHER HOPE

A WELL KEPT SECRET

This is an exhibition of works by the South Canterbury artist Esther Studholme Hope. A well known and successful landscape artist within her own time, she has been neglected by traditional New Zealand art history until recently. This exhibition is the first major retrospective since her death.

Esther Hope had lessons from Margaret Stoddart who not only influenced her painting style, but undoubtedly the choice of art education that she decided to pursue. In 1912 she travelled overseas to continue her art education at the Slade School of Art in London. Once back in New Zealand she continued painting, going for painting trips in the Landscape she enjoyed most, the MacKenzie

Country. Esther was often accompanied by such well-known artists as Olivia Spencer Bower and Sydney Lough Thompson.

Like many women Landscapists, Esther Hope sought to depict her immediate environment, articulating through her work a strong and vivid sense of the ruggedness and isolation of the MacKenzie Country.

16 NOVEMBER-5 DECEMBER 1993 PREVIEW TUESDAY 16 NOVEMBER 5.30PM

CSA WORKING MEMBERS

WHERE THE WATER
MEETS THE LAND

This exhibition focuses on arguably the most popular subject of all time, and presents eight artists concepts of landscape and its interpretation in several visual languages.