

M. O. S.



A SUCCESSFUL NEW ZEALAND ARTIST: MISS M. O. STODDART.
Miss Stoddart recently received information from the Director of the Salon de la Societe des Artistes Francais, stating that the two pictures sent by her to Paris have been accepted for exhibition in the Salon. H. H. Clifford.



THE HON. JAS. HOLMES, OF HOKITIKA, WHO HAS JUST BEEN RE-APPOINTED TO THE LEGISLATIVE COUNCIL. Tasma.



MR. E. O'CONNOR, OF CHRISTCHURCH, WHO WAS LAST WEEK PRESENTED WITH A TESTIMONIAL IN RECOGNITION OF HIS FORTY-FOUR YEARS' SERVICE AS SECRETARY TO THE ROMAN CATHOLIC CHURCH, CHRISTCHURCH. (For letterpress see page 67.) Standish and Prece.



THE OPENING OF THE HUTT (WELLINGTON) GOLF CLUB SEASON ON SATURDAY, MAY 27th: SOME OF THE COMPETITORS AND FRIENDS. Muir and Mackinley.



AN ENTERPRISING NEWS MERCHANT OF WELLINGTON. J. S. Hammond.



IN THE NEWLY ENCLOSED BATH, CORSAIR BAY, LYTTELTON: THE FINAL OF THE LYTTELTON GYMNASIUM SWIMMING CLUB'S LADIES' 50YDS HANDICAP.
The race was won by Mrs. Watkins. The bath was lately enclosed by the Lyttelton Borough Council: that they made a good job of it can be seen by the substantial nature of the enclosing fence, whose posts are stout and deeply sunk. In the picture it is high water, so the bath is practically shark-proof. The fence seen in the picture is continued back to the rocks on the right, and before long the Council propose to run it to the point with the pines on it, thus enclosing the whole bay. The bath is open to men before nine and after five, and to ladies from nine to five, and is a great addition to the attractions of Corsair Bay as a picnic resort, the beach of very fine sand being pleasant to bathe from. The bath is distant a mile from the Lyttelton Railway Station. The bath is used by two swimming clubs in Lyttelton, and for the annual swimming sports of the Christchurch Girls' High School and the Christchurch Boys' High School. D. D. Vickerman.

[2015.115.]

ARBU 322

alfred martin photos 1877
(neg. 578)

Margaret Stoddart Clatlam
watercolours 1886,
(neg 579.)

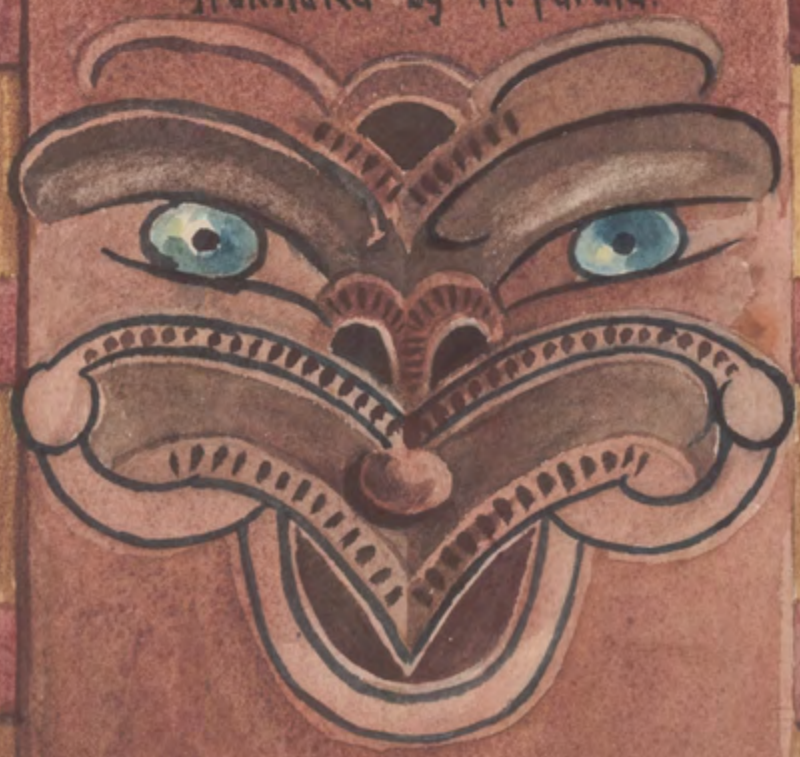
321



1888,
Waitangi, Chatham Islands,
Hau-hau prisoners' huts.

Blew on! ye winds bringing sorrow,
 Here let me weep in bitterness of spirit
 For parted friends gone to Paerau, (Hades)
 Who may see them there?
 Where are the friends of my greatness?
 In weakness now they leave me,
 Unhonoured and alone,
 Rain on! O Hains,
 Descending from thy heights above,
 I too beneath thee sit, raining out my tears the while
 Sleep on, O Manoi, yonder,
 While intervenes the land of Tiroa rising near—
 A bar from home and friends.
 Upon a lonely rock at Taupo oft-times we sat,
 Or, east upon the sandy Waiki shore,
 Sought shelter 'neath parent mountain Tongarino.
 Return O my Soul, to Taupo's sulphury springs,
 At Tokaanu,
 The waters wherein the people bathed,
 The scenes I loved so well.

Lament of Te Kooti.
 Translated by H. Parata.



Otaki.
 January,
 1893.



Te
 Whakaru.





Te Whakaru, Chatham Islands.



Across
the
Straits,

In the Tobacco Country, Chatham Islands.





"Omaha." 1886.



Whangaroa.



Kopukepuke.



Mt. Torlesse. August. 1892.





Xmas to New-year.
1893-94.



Port Levy.



Akaroa, 1893



In
Cashmere Quarry.

June.
1893.



On Mt. Pleasant.
17/6/93.



Cashmere
Quarry.



Mt. Torlesse.



August, 1893.



November.
1894.



VIEW FROM GOVERNMENT HOUSE, RISSON. 666B. BEATTIE, HOBART. Y. D. L. SERIES

FERN TREE BOWER & TRACK. 290A. BEATTIE, HOBART.



Studley Park..



Near Mayfield. Victoria.



Crossing the Haaker.





RANUNCULUS LYALLI
MOUNT LILL



Mt. Cook.



Snow effects. Mt. Cook.



Bivouac. 1000 ft.



Mt. Cook from Whitehouse Hill.



Maltebrun from Mt. Wakefield.



Mt. Soffen.



Exit of Hooker River.



Pukaki Ferry.



Lake Tekapo.



Mt. Sefton

Mt. Cook

Haidensee.



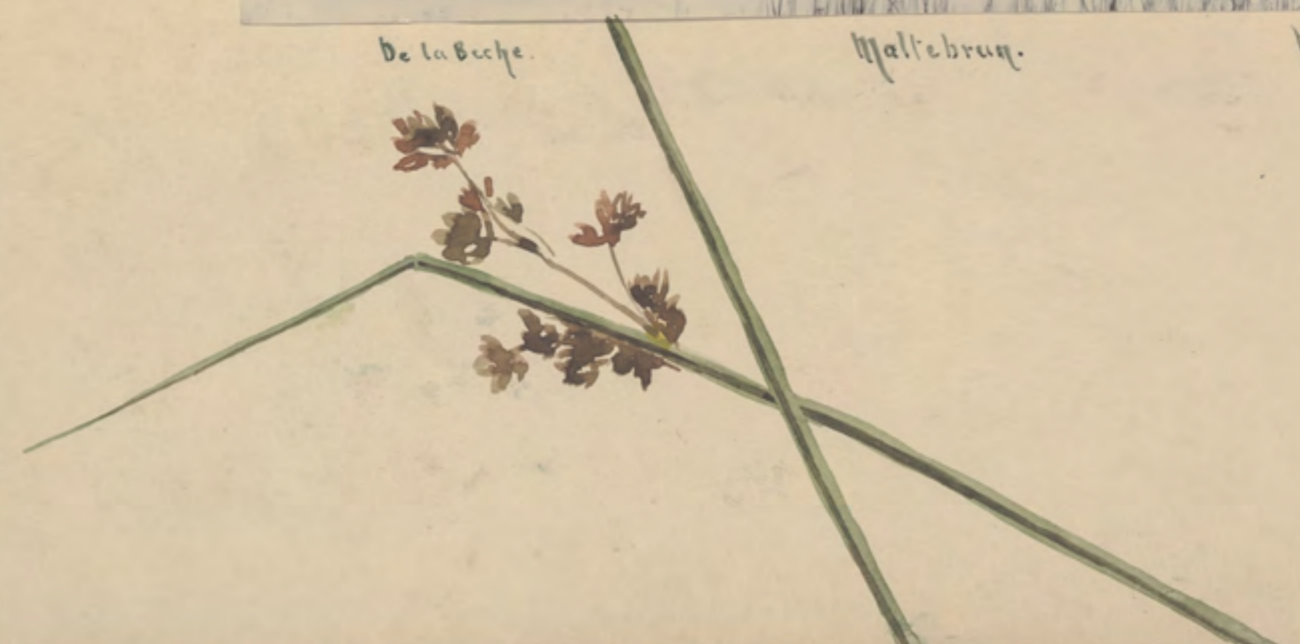
De la Roche.

Maltebrun.

Man's Veil.



Botanical Gardens, Melbourne.



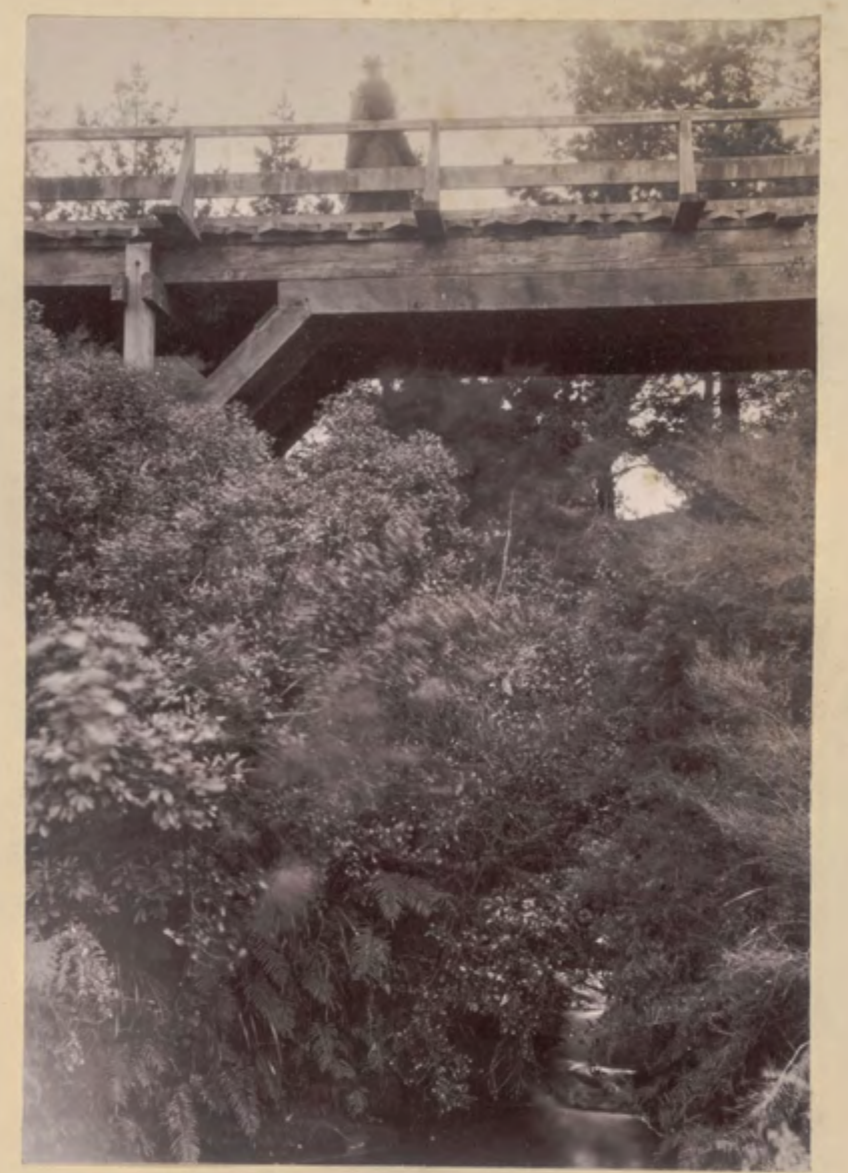


On the Goulburn, Victoria





1986-161-12





Craigieburn.

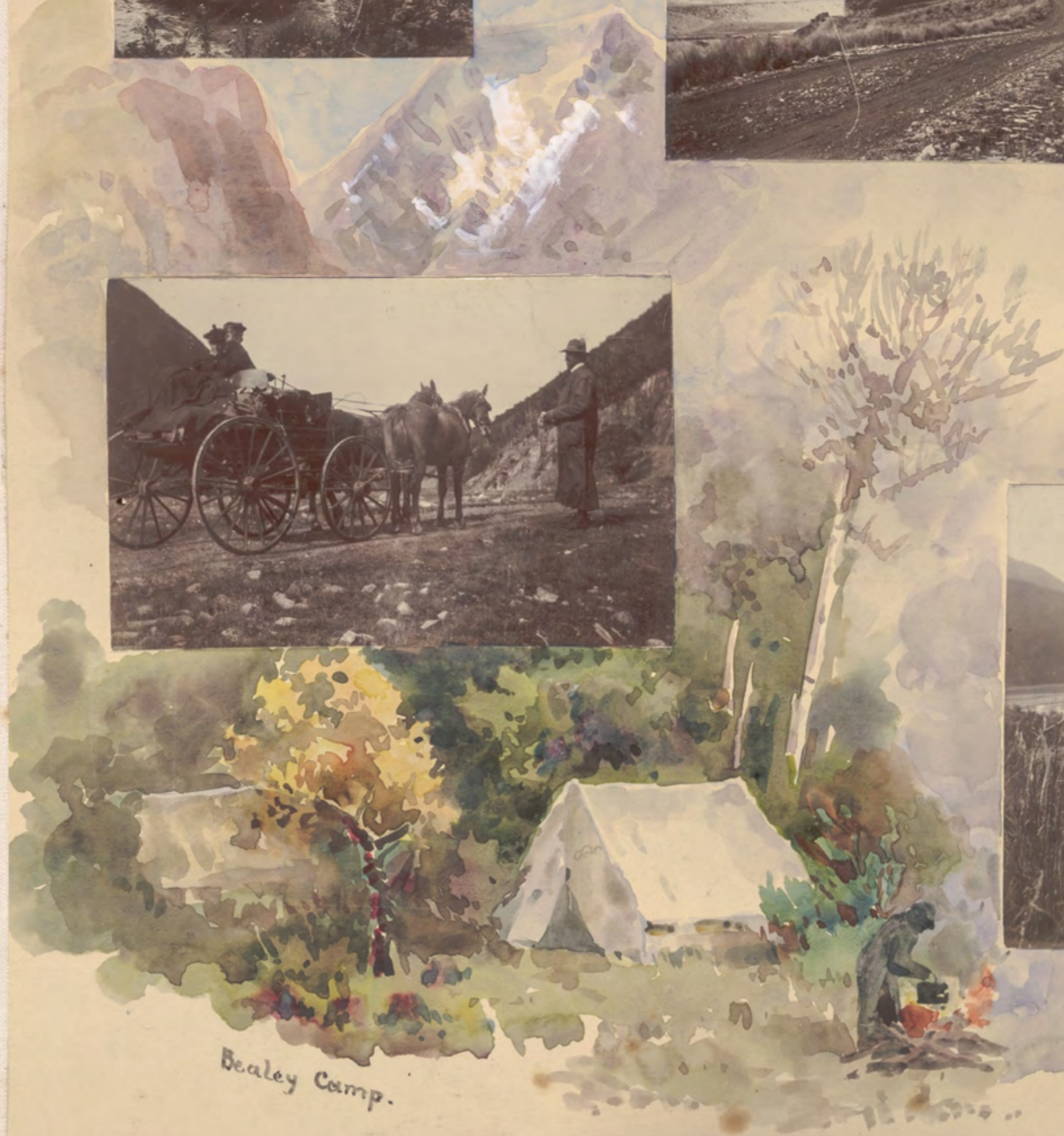
Castlehill Hotel.



Broken River.



Hawdon River.



Bealey Camp.

On the
West Coast Road.

April. 24-29. 1896.

(1500) - Whole
Page



Craigie burn.

(1500)

