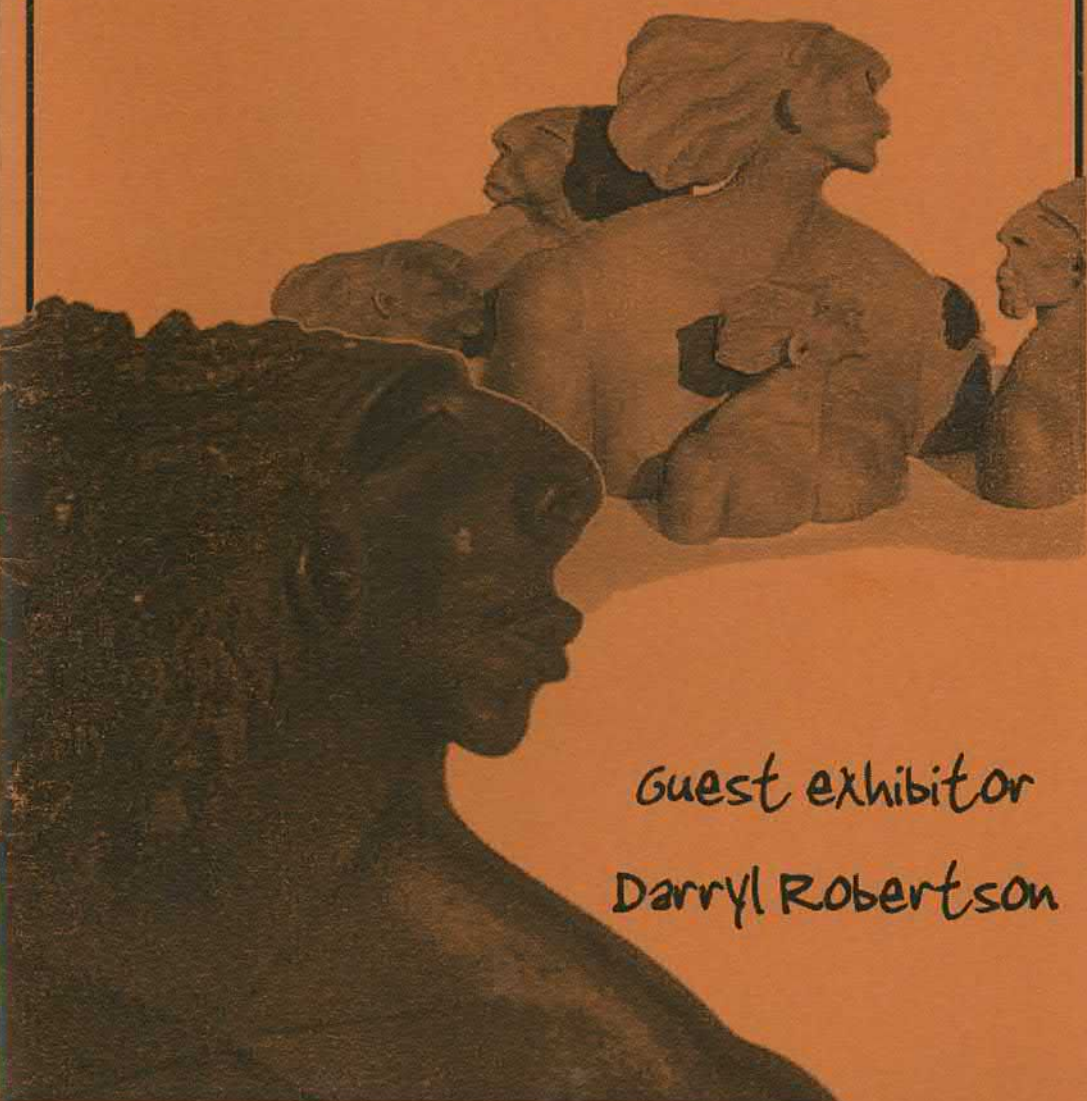


canterbury Potters Association (inc)

34th Annual Exhibition

November 8-18th 2007

canterbury Museum - visitors' lounge



Guest exhibitor

Darryl Robertson

Guest selector & exhibitor

Darryl Robertson

Exhibition Committee

Michael Michaels (CPA President), Alex Prentice, Sarah Ford, Magda Sakowska, Anu Pratap, Phillipa Trumic, Kate Walton, Lorraine Bonisch, Dorit Dolev, Anne Hill, Hawwa Moore, Sue Talbot

Catalogue

Magda Sakowska

Photography

Jim Pollard

Exhibition Designer

Michael Michaels, Phillipa Trumic

Catalogue cover & poster design

Amy Michaels

Thanks also to all the volunteers who gave their time generously to help receive pots, select them, pack them, transport them, assist with exhibition set up, and photography. Without you, we wouldn't have an exhibition.

## Opening night sales procedures

No work will be sold until Michael Michaels, President of the Canterbury Potters' Association, has declared the exhibition open.

On each exhibition stand are small white sales cards, which bear numbers corresponding to the works on that stand. To purchase a work, remove the corresponding white sales card, write your name and address on the back and take it to the Sales Desk where your purchase will be recorded.

Please do not remove any sales cards until the exhibition has been declared open.

A minimum of 10% of the sales price is required as a deposit.

Note: Raku and pit fired work is not intended for holding liquids

## Collection of work

Work will be available for collection from the Museum on Monday November 19<sup>th</sup>, between 9am and 11am. Work not collected at this time, can be collected from the Pot Shop, Arts Centre, Worcester Street, Christchurch. Please keep the sales card as proof of purchase and present it when you collect your work

# Darryl Robertson

Darryl Robertson was born in Reefton and lived in the small rural settlement of 30 people at Mawheraiti, twenty kilometres away. At the age of four his family moved to Nelson.

From an early age, Darryl was fascinated with the stained glass windows, sculptures and architecture. On his way home from school he would visit St Mary's church or the Suter Art Gallery, and absorb the atmosphere of these buildings which demanded respect when entering their large echoing spaces. From here the artistic feeling was set in motion. At the time, he did not understand what evoked the exciting powerful emotions from within, but later, working as an artist he understood why he had felt the way he had done as a child.

As a college student, in 1972, Darryl first became involved with clay whilst working with May and Harry Davis, both highly regarded potters. Darryl completed his training in seven studios over seven years in New Zealand; Cornwall, England; and Queensland, Australia. These included an apprenticeship with Jack Laird at Waimea Craft Pottery, New Zealand.

Darryl later travelled through 30 countries seeking art and artistic expression of many kinds, sometimes seeking places, other times finding them by chance. These experiences changed him and the way he would aim to work from that point on.

Since 1980, Darryl Robertson's works have been widely exhibited in over 260 exhibitions and collected by both New

Zealanders and overseas including in Japan, Taiwan, Singapore, USA, Italy, Germany, France, South Africa, Switzerland, Mexico and Saudi Arabia.

Robertson's works are held in many museums and art collections nationally and internationally, as well as in hundreds of corporate and private collections. Many of these works were specifically commissioned original pieces for each client. He has also extensively exhibited locally, nationally and internationally (Switzerland, Italy, France, Germany, Australia, Japan, South Africa, Egypt, USA, England).

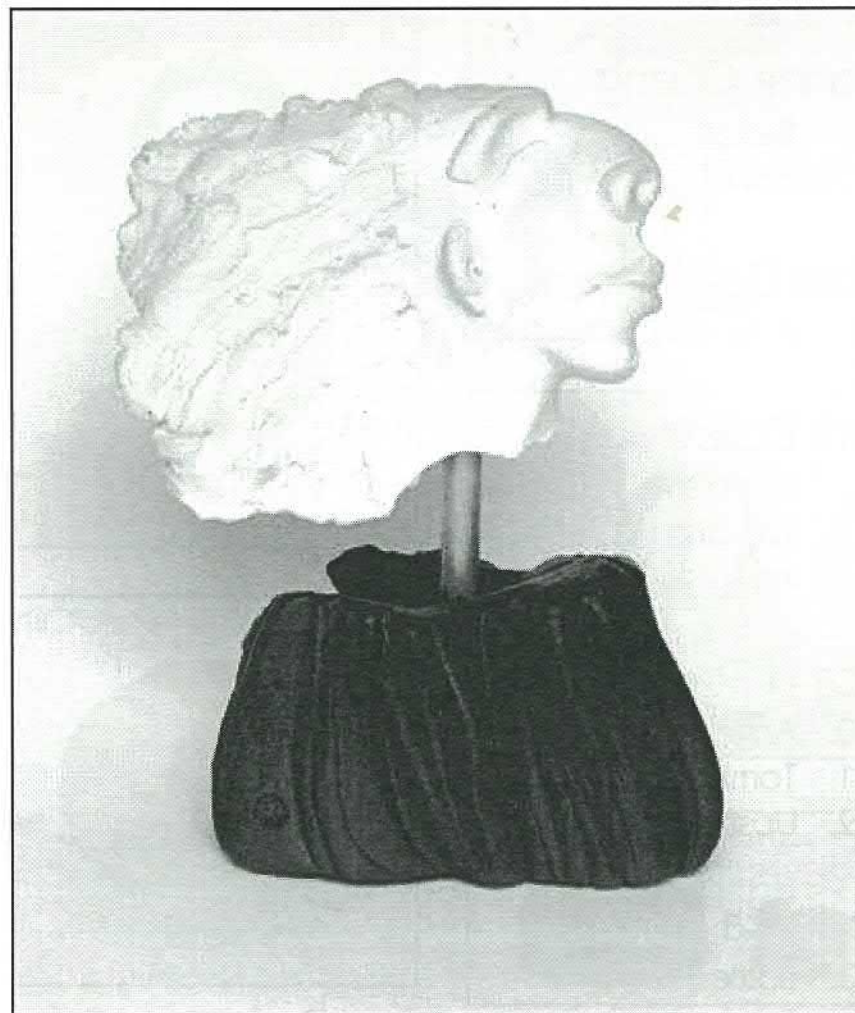
His work has gained recognition in the form of many honors and awards in both New Zealand and overseas. Of note, he was awarded in 1993 the Gold Medal and Diploma of Honour at the XIII Biennale Internationale De Ceramique Art in Vallauris, Southern France. He was also the recipient of the New Zealand Japan Foundation Grant (1993) to make artworks and sculptures, carry out lectures and held two exhibitions in Japan.

On his return to New Zealand in 1980, Darryl co-established studios in two different locations around the Nelson province before finally settling at Bronte and establishing the Bronte Gallery where he and his artist partner Lesley Jacka Robertson are the resident artists.

# Catalogue

## Darryl Robertson

A.	Waimea in my canoe	1,400
B.	Waitua in my canoe	1,400
C.	Manuka jade head	390
D.	We two jade heads	660
E.	Equal but opposite	1,200
F.	Flying hair #1	290
G.	Flying hair #2	290
H.	Venus	310
I.	Volcanic upthrust DNA #1	1,100
J.	Volcanic upthrust DNA #2	1,100
K.	Over my shoulder	960
L.	Landform – two points of view	1,600



## Lorraine Bonisch

- |                              |    |
|------------------------------|----|
| 1. Raku wall bottle - large  | 70 |
| 2. Raku wall bottle - small  | 80 |
| 3. Raku wall bottle - medium | 80 |

## Yvonne Chiang

- |           |     |
|-----------|-----|
| 4. Basket | 220 |
| 5. Bowl   | 200 |

## Steve Dench

- |                  |    |
|------------------|----|
| 6. Pumpkin pot 1 | 80 |
|------------------|----|

## Dorit Dolev

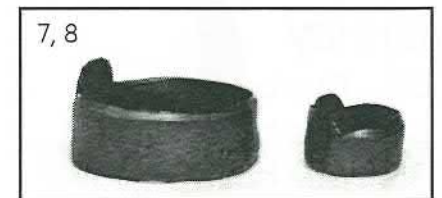
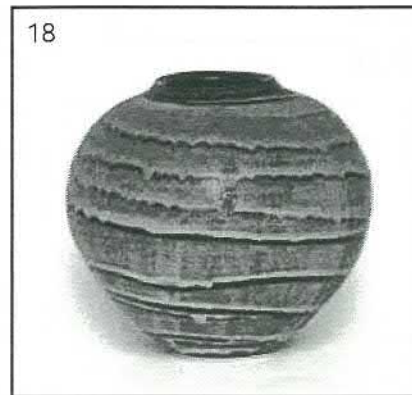
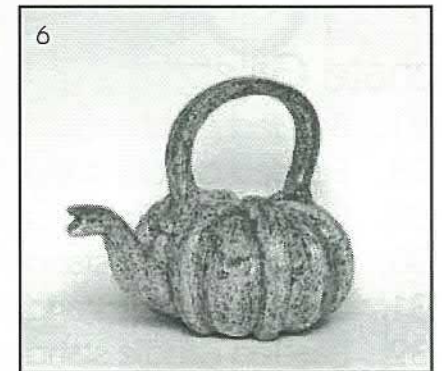
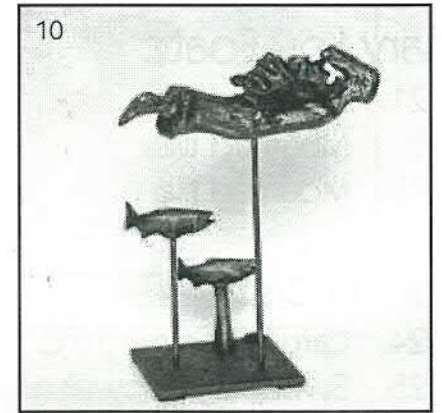
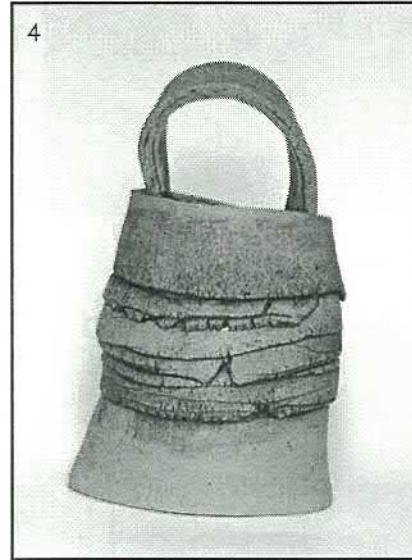
- |              |     |
|--------------|-----|
| 7. Iron dish | 120 |
| 8. Iron dish | 60  |
| 9. Iron dish | 80  |

## Erica d'Stewart

- |                                |     |
|--------------------------------|-----|
| 10. Angel and fishes flying by | 220 |
| 11. Tomboy                     | 280 |
| 12. Upstream                   | 220 |

## Frederika Ernten

- |            |    |
|------------|----|
| 13. Bottle | 76 |
| 14. Bowl   | 68 |
| 15. Bowl   | 54 |
| 16. Bowl   | 36 |
| 17. Vase   | 86 |
| 18. Vase   | 96 |



- |            |    |
|------------|----|
| 19. Vase   | 52 |
| 20. Bottle | 56 |

### Mary Lou Foate

- |                  |     |
|------------------|-----|
| 21. Mounted tile | 100 |
| 22. Mounted tile | 100 |
| 23. Mounted tile | 110 |

### Sarah Ford

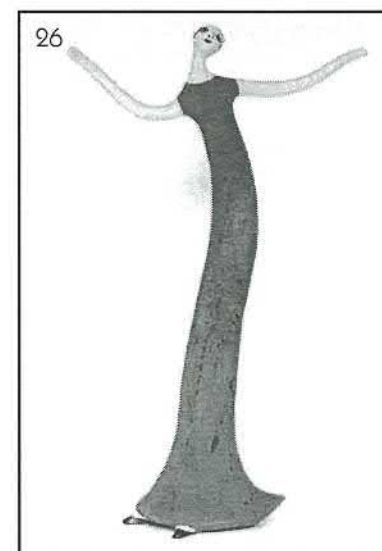
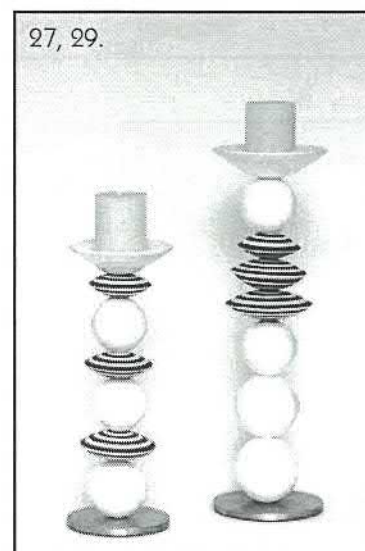
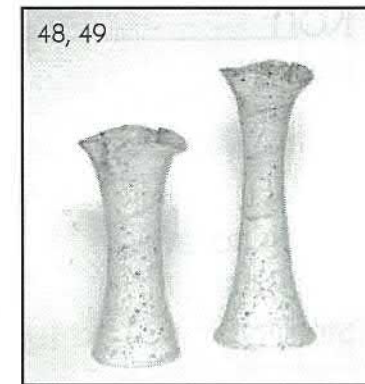
- |   |     |
|---|-----|
| 24. Carolina on my mind                       | 400 |
| 25. Sweeping cobwebs from the edge of my mind | 350 |
| 26. While I dance                             | 300 |

### Renate Galetzka

- |                                |     |
|--------------------------------|-----|
| 27. Beaded candle stand small  | 180 |
| 28. Beaded candle stand small  | 180 |
| 29. Beaded candle stand medium | 210 |
| 30. Beaded candle stand medium | 210 |
| 31. Beaded candle stand large  | 240 |
| 32. Beaded candle stand large  | 240 |

### Neil Hey

- |                            |     |
|----------------------------|-----|
| 33. Blue bowl 1            | 50  |
| 34. Blue bowl 2            | 98  |
| 35. Blue bowl 3            | 160 |
| 36. Serving bowl           | 115 |
| 37. Side bowl, set of four | 125 |
| 38. Platter of colours 1   | 185 |
| 39. Platter of colours 2   | 148 |
| 40. Bowl of colours        | 155 |



## Mary Koh

41. Natural II 120

## Yi-Ming Lin

42. Rolling horse 700

43. Teapot set 160

44. Still life 450

## Joy McKelvey

45. Lily vase 70

46. Lily vase 60

47. Lily vase 50

48. Speckled lily vase 70

49. Speckled lily vase 60

## Amy Michaels

50. Standing tall two 250

51. On top 330

52. High stools 350

## Michael Michaels

53. 'Head of a figure' after Spedos a/p 895

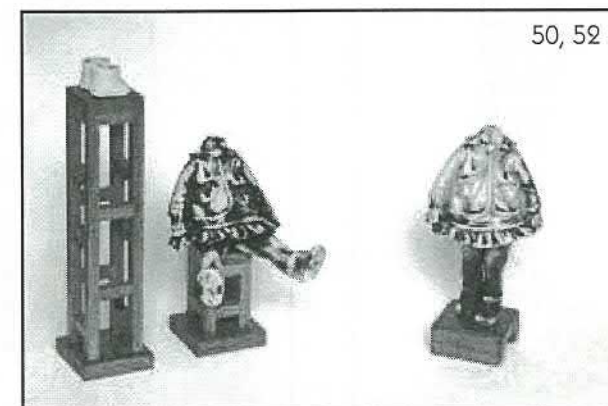
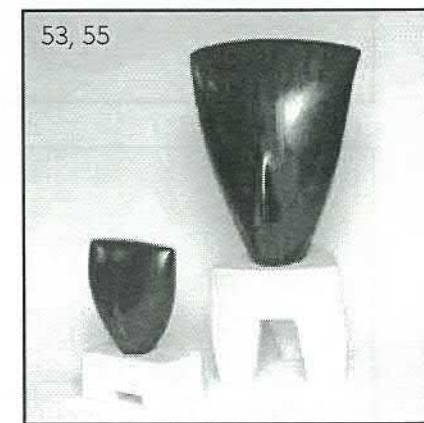
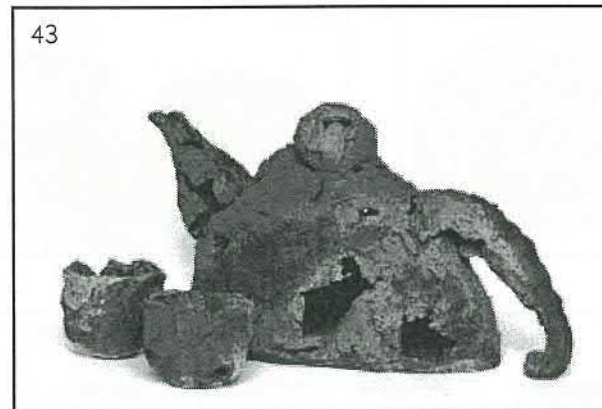
54. 'Head of a figure' after Spedos a/p 895

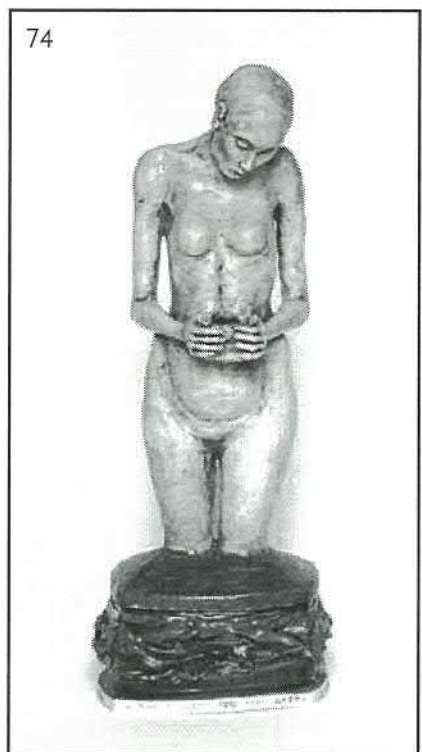
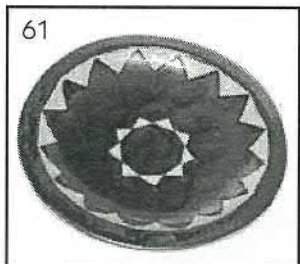
55. 'Head of a figure' series a/p 250

56. 'Head of a figure' series a/p 250

57. 'Head of a figure' series a/p 250

58. 'Head of a figure' series a/p 250





## Seiji Miyajima

59. White lady 650  
60. Heart lady 650

## Hawwa Moore

61. Pair of plates 150

## Gaye Morton

62. Small flanged bowl 35  
63. Medium flanged bowl 45  
64. Large flanged bowl 55  
65. Large flanged bowl 55  
66. Medium flanged bowl 45  
67. Small flanged bowl 35

## Akane Nakao

68. Beaker 50  
69. Beaker 50  
70. Beaker 50  
71. Beaker 45  
72. Beaker 45

## Jane O'Neill

73. Offering II 150  
74. A box for dreams 300  
75. A box to keep the soul safe 300

## Ann O'Sullivan

76. Bear bowl 20



## Ranae Palatchie

- 77. Tea cup 30
- 78. Gold vase 55

## Anu Pratap

- 79. Untitled 250
- 80. Untitled 180

## Alex Prentice

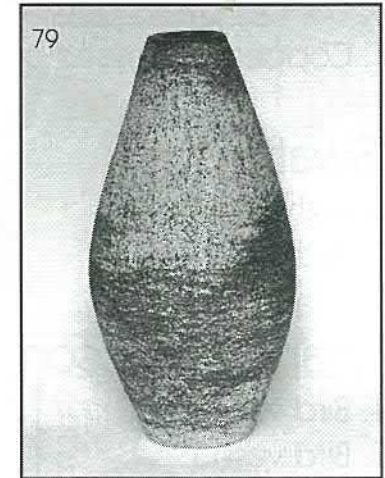
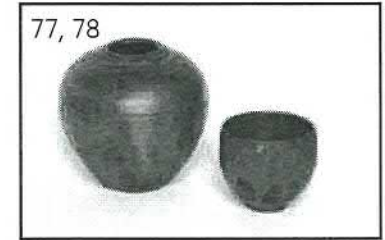
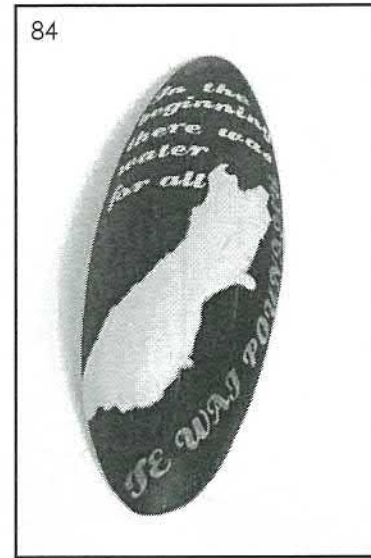
- 81. Blue kelp 30
- 82. Hotplate 30
- 83. Hotplate 30

## Linda Pringle

- 84. Pacific shield 200
- 85. Pacific shield 200
- 86. Pacific shield 200
- 87. Pacific shield 200

## Hugh Ricard

- 88. Large koru bowl 250
- 89. Medium silver fern bowl 195
- 90. Small silver fern bowl 150
- 91. Small silver fern bowl 150
- 92. Blackberry vase 75
- 93. Blackberry vase 75
- 94. Blackberry vase 60



## Margaret Ryley

- |         |     |
|---------|-----|
| 95. Pot | 750 |
| 96. Pot | 750 |
| 97. Pot | 750 |

## Magda Sakowska

- |                                 |     |
|---------------------------------|-----|
| 98. Green oyster bowl           | NFS |
| 99. Copper oyster bowl (large)  | 55  |
| 100. Copper oyster bowl (small) | 45  |
| 101. Copper twin oyster bowls   | 55  |

## Joy Swafford

- |                      |     |
|----------------------|-----|
| 102. Flight of fancy | 250 |
| 103. Withinwithout   | 250 |

## Rosemary Thompson

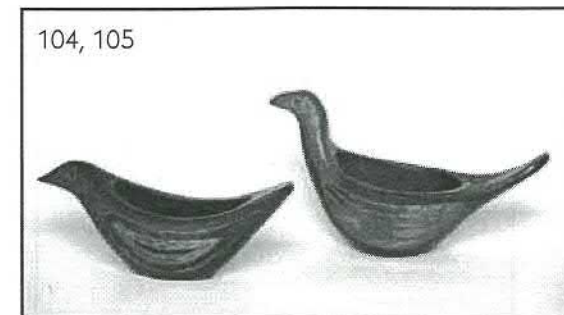
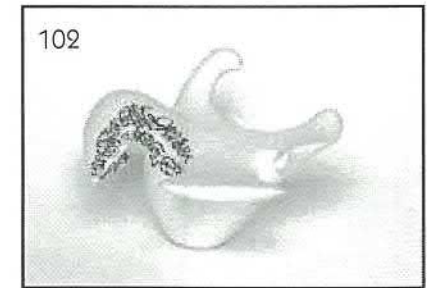
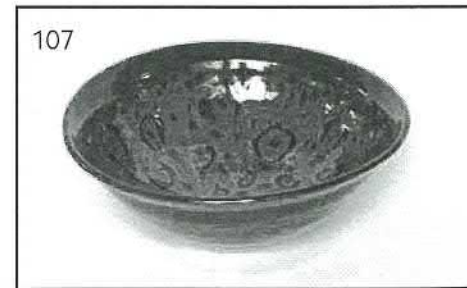
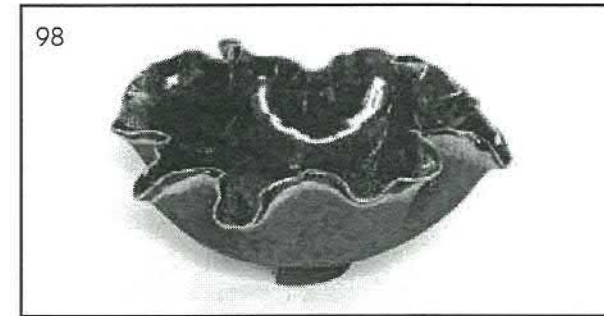
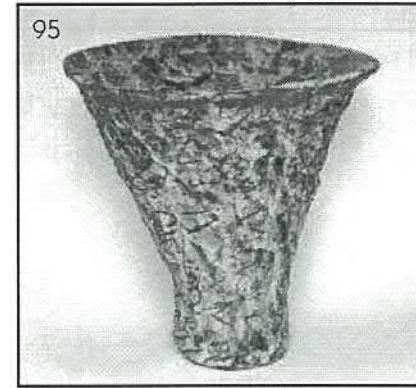
- |                  |     |
|------------------|-----|
| 104. Bird vessel | 160 |
| 105. Bird vessel | 170 |
| 106. Nikau box   | 170 |
| 107. Nikau box   | 195 |

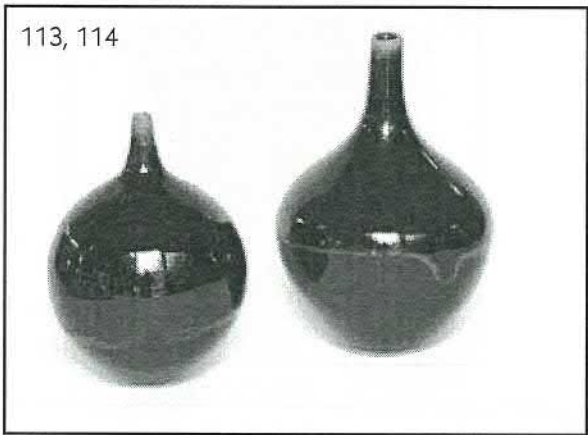
## Phillipa Trumic

- |                         |     |
|-------------------------|-----|
| 108. Bowl               | 80  |
| 109. Set of three bowls | 160 |

## Liz Walker

- |                          |     |
|--------------------------|-----|
| 110. Wave of fire – bowl | 110 |
| 111. Wave of fire – bowl | 110 |
| 112. Wave of fire – bowl | 110 |

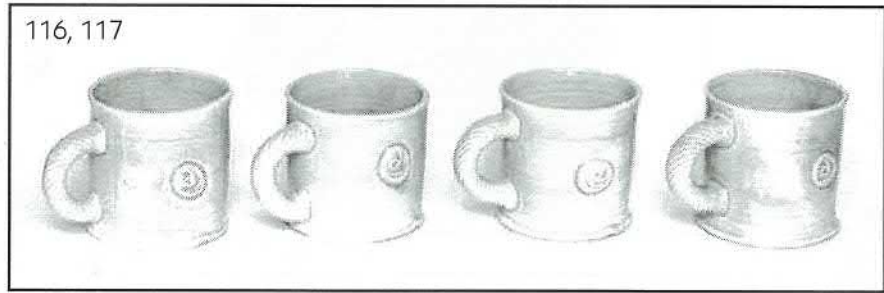




- 113. Cabernet/shiraz - bottle 115
- 114. Cabernet/shiraz - bottle 115
- 115. Cabernet/shiraz - vase 115

Kate Walton

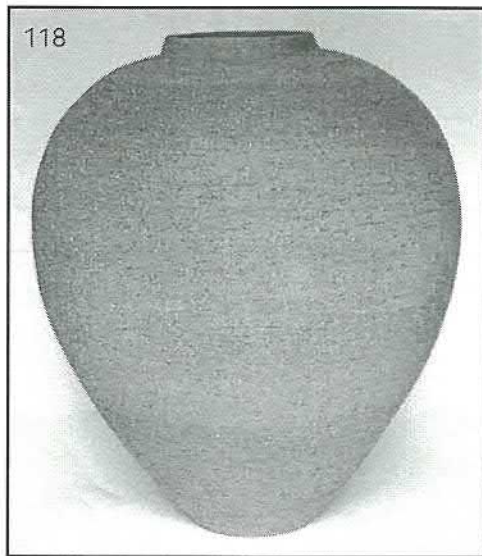
- 116. Turquoise mugs (pair) 60
- 117. Turquoise mugs (pair) 60



Alex Watson

- 118. Terracotta pot 1 240
- 119. Terracotta pot 2 240

➤ First time exhibitors



We are a forty-four year old association with nearly 100 members in Christchurch and the Canterbury region. We are a sociable group interested in all aspects of pottery, and we welcome members who wish to learn more about our craft. We offer pottery classes for adults during the school terms, and for young people during vacations. These classes, in which many Canterbury potters started off, cater for both experienced potters and absolute beginners. All classes are open to non-members.

Each year we present this regional exhibition in the Canterbury Museum and during the year a variety of more social events like open days and outdoor firings. We have facilities for a wide range of pottery techniques. These include three electric kilns a gas kiln, electric wheels, a four-inch extruder, pug mill, glaze spray booth and an extensive library, which includes a collection of videos.

## The Avice Hill Memorial Prize

This prize has been established to honour the memory of Avice Hill, devoted supporter of the craft of pottery and generous benefactor to the Canterbury Potters Association, who over many years sought to encourage excellence in ceramics.

The prize is awarded to a first time exhibitor who demonstrates outstanding potential in the craft of the potter. This award is selected by the Guest Selector, CPA President and immediate past president.

Canterbury Potters Association (Inc.)  
Avice Hill Reserve  
395 Memorial Avenue  
Christchurch  
Phone 3589467

Pottery Classes for

- Absolute beginners
- Experienced potters
- Young people, after school
- Special needs adults
- School holiday programmes

Our workshop is set in the gardens of the Avice Hill Reserve at 395 Memorial Avenue.

For more information, phone (03) 358 9467 or check out our details online under Affiliated Clubs at [www.nzpotters.com](http://www.nzpotters.com).