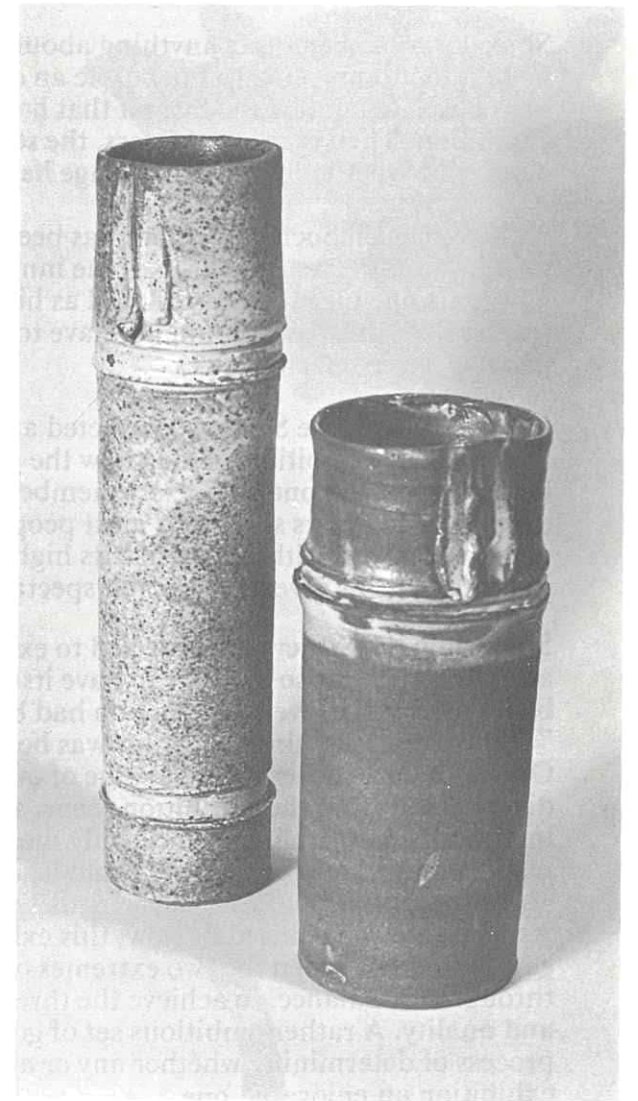




21st National Exhibition  
NZ Society of Potters



Anne McCartney



**22 Oct - 19 Nov 1978  
Waikato Art Museum  
Investment House  
London Street  
Hamilton**



# Foreword

Composing the foreword to the catalogue of a national exhibition is always a daunting affair, especially so when one realises that, at the time of writing, the exhibition as such does not yet exist, and in fact, that some of the pots that will give it life and substance are still "in utero" (or at least cooling down in their kilns).

Since I'm not able to say anything about the exhibition in detail, perhaps it would be best to attempt to give the public an explanation of the reasons why the Society has chosen to employ the format that has been used for the first time with this exhibition. Then they, the potters, the selectors and the critics will be able to determine whether or not the change has achieved the effects we sought.

As before, each Society member has been able to submit five pieces or sets for the exhibition. This year, and this is the innovation, each potter had the right to nominate one piece to be exhibited as his own choice. Unlike the rest of his submission, this piece would not have to undergo the selection process with the panel of three selectors.

Four years ago, the Society conducted a totally unselected exhibition, in the belief that such an exhibition would show the public and the potters a full range of the best work being done by Society members. As a result, the exhibition was so overwhelming in its scale that most people were unable to come to terms with the pots themselves. Although it had its high points, its quality was seriously impaired, in particular, by several large and spectacularly abominable pieces.

Since then the Society has reverted to exhibitions that have been entirely selected, and this process also appears to have its drawbacks. Many members of the Society believed that the levels of selection had been set too high, and that the "atmosphere" within the Society was becoming more competitive than co-operative. Our critics also observed that some of our most vital pots, and potters, had disappeared from the exhibition scene, so that the national exhibitions were lacking in diversity and vitality because only the "safe" pots were left. It was even said that institutionalising of standards could lead to the institutionalising of creativity.

As you will have realised by now, this exhibition has been structured so as to effect a compromise between the two extremes of all selection and no selection, and through this balance, to achieve the three essential elements of diversity, vitality and quality. A rather ambitious set of goals? I hope at least that you will find the process of determining whether any or all of these aims have been achieved in this exhibition an enjoyable one.

*Stan Jenkins*

Interim Chairman

## Exhibition Sales

An intending purchaser must collect the sales ticket bearing the number of the item being purchased.

The ticket must then be shown at the sales desk, in order that the purchase may be recorded in the sales book.

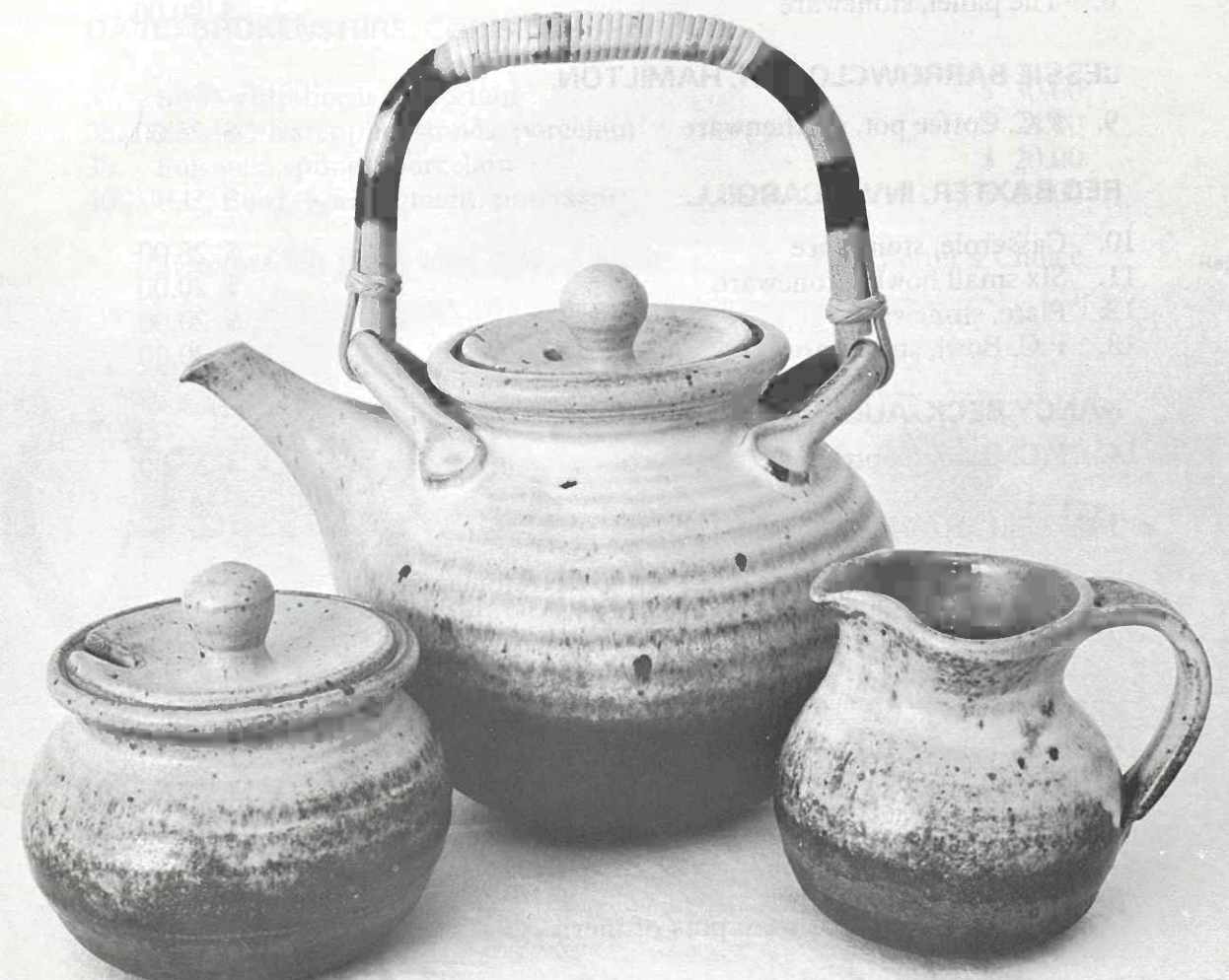
All items to be paid for in full at time of purchase.

Purchased pots are to be collected on Sunday, 19 November between 5 p.m. and 7 p.m. Alternative arrangements for collection after the 19th, to be made at the time of purchase.



Neil Grant

Ian Firth





**IAN FIRTH, AUCKLAND. GUEST POTTER**

- A. Large jug, stoneware \$150.00
- B. Bowl, stoneware \$ 60.00
- C. Three piece teaset \$ 45.00

**NEIL GRANT, DUNEDIN. GUEST POTTER**

- D. Tenmoku Teapot \$ 29.00
- E. Plate \$ 70.00
- F. Bottle \$ 30.00
- G. Nikau \$170.00
- H. Raku pot \$ 70.00

**BARRY BALL, TE KUITI.**

- 1. Six dinner plates, stoneware \$ 72.00
- 2. Plate, stoneware \$ 22.00
- 3. P.C. Crock, stoneware \$ 70.00

**GREG BARRON, KAEO.**

- 4. Set of dinner plates, stoneware \$ 66.00
- 5. Pair of goblets, stoneware \$ 10.00
- \* 6. Pitcher, salt glazed stoneware \$ 26.00
- 7. P.C. Casserole, stoneware \$ 38.00

**NOLA BARRON, CHRISTCHURCH.**

- 8. Tile panel, stoneware \$ 90.00

**JESSIE BARROWCLOUGH, HAMILTON.**

- 9. P.C. Coffee pot, earthenware \$ 25.00

**REG BAXTER, INVERCARGILL.**

- 10. Casserole, stoneware \$ 25.00
- 11. Six small bowls, stoneware \$ 20.00
- 12. Plate, stoneware \$ 20.00
- 13. P.C. Bowl, stoneware \$ 30.00

**NANCY BECK, AUCKLAND.**

- 14. P.C. Branch bottle \$ 35.00

**JAN BELL, HAVELOCK NORTH.**

- 15. Teapot, milk and sugar bowl, salt glazed stoneware \$ 30.00
- 16. Herb teapot, salt glazed stoneware \$ 18.00
- 17. Jug, salt glazed stoneware \$ 20.00

**JANE BEVERLY, TE HORO.**

- 18. Large bowl, stoneware \$ 55.00
- 19. Dish, stoneware \$ 24.00
- 20. Dish, salt glazed stoneware \$ 28.00
- 21. Bottle, stoneware \$ 24.00

\* Selectors felt these were pots of merit

P.C. Potter's Choice

**KEITH BLIGHT, AUCKLAND.**

- 22. 'Impressions of Nature' triangular pot, stoneware \$ 52.00
- 23. 'Impressions of Nature' triangular pot, stoneware \$ 55.00
- 24. P.C. Thrown slab pot, stoneware \$100.00

**ANNEKE BORREN, SANTA BARBARA, CALIFORNIA**

- 25. Cube, crystalline glaze on porcelain \$ 32.00
- 26. Two spheres set, crystalline glaze on porcelain \$ 50.00

**IRENE BOULTON, CHRISTCHURCH.**

- 27. Glazed necklace, reversible, earthenware \$ 40.00
- 28. Glazed necklace, reversible, earthenware \$ 40.00
- 29. P.C. Glazed necklace, reversible, earthenware \$ 40.00

**NICHOLAS BRANDON, INGLEWOOD.**

- 30. Wine bottle, porcelain \$ 40.00

**ROGER BRITTAIN, AUCKLAND.**

- 31. Floor pot, stoneware \$ 65.00

**ROSEMARIE BRITTAIN, AUCKLAND.**

- 32. Large sea goblet, porcelain \$ 30.00
- \* 33. Large sea goblet, porcelain \$ 30.00
- 34. Small flower goblet, porcelain \$ 12.00
- 35. Pair of small flower goblets, porcelain \$ 25.00 (pair)
- 36. Pair of small blushing goblets, porcelain \$ 25.00 (pair)

**DAVID BROKESHIRE, CHRISTCHURCH.**

- 37. Bowl with thorns, porcelain \$ 30.00
- 38. Bowl with stepping stones, porcelain \$ 24.00
- 39. Poisoned splines, porcelain \$ 20.00
- 40. P.C. Bowl — a fragment, porcelain \$ 30.00

\* Selectors felt these were pots of merit

P.C. Potter's Choice

Reg Baxter

Greg Barron





Rosemarie Brittain



Charles Holmes

**MADGE CANTY, TAURANGA.**

41. Bowl, stoneware \$ 10.00

**JANE CAPON, NEW PLYMOUTH.**

42. Shino frilled bowl, porcelain \$ 14.00  
 43. Terrestrial bottles — group of three, stoneware \$ 36.00

**STEPHEN & ZOE CARTER, NELSON**

44. Casserole, stoneware \$ 35.00  
 45. Six teaplates, stoneware \$ 36.00  
 46. Pair of oil bottles, stoneware \$ 20.00  
 47. P.C. Hanging wine bottle \$120.00

**ROGER CHAPLIN, COALGATE.**

48. Teapot, stoneware \$ 22.00  
 49. Bottle, stoneware \$ 20.00  
 50. P.C. Wine bottle, stoneware \$ 30.00

**FLORA CHRISTELLER, PINEHAVEN.**

51. P.C. White bowl, stoneware \$ 40.00

**MARGARET COUPE, KAIKOHE.**

52. P.C. 'Paradise Lost', earthenware mosaic \$275.00

**ROY COWAN, WELLINGTON.**

53. P.C. Salt glazed piece, stoneware \$180.00

**JOHN CRAWFORD, WESTPORT.**

54. Decorated vase, stoneware \$ 20.00  
 55. Pair of vases — coiled rims, stoneware \$ 30.00 (pair)  
 56. P.C. Large vase, stoneware \$ 99.00

P.C. Potter's Choice

**GENNIE DE LANGE, CHRISTCHURCH.**

- \* 57. Petunias, earthenware tiles \$200.00  
 58. Fragrantissimum, earthenware tiles \$200.00  
 59. Red Rhododendrons, earthenware tiles \$200.00  
 60. Pears, earthenware tiles \$200.00

**DORIS DUTCH, WAITAKERE.**

61. Landscape trinket box, porcelain \$ 30.00  
 62. Cut bottle, porcelain \$ 20.00  
 63. Hanging weed pot, stoneware \$ 20.00  
 64. Standing weed pot, stoneware \$ 14.00  
 65. Pair of crater form dishes, stoneware \$ 20.00

**OLWYN DYKES, INVERCARGILL**

66. Soup cups, low temperature stoneware \$ 36.00  
 67. Plate, low temperature stoneware \$ 15.00  
 68. P.C. Ring box \$ 12.00

**FREDERIKA ERNSTEN, CHRISTCHURCH.**

69. Casserole, stoneware \$ 24.00  
 70. Bottle, stoneware \$ 18.00  
 71. Jar, stoneware \$ 18.00

**DOROTHY EWART, SILVERSTREAM.**

72. Two savoury dishes, NZ Kidney ferns, earthenware \$ 13.00  
 73. P.C. Pavlova plate \$ 20.00

**JAN FLEMING, PLIMMERTON.**

74. Casserole, stoneware \$ 16.00  
 75. Platter, stoneware \$ 16.00  
 76. Teapot, stoneware \$ 16.00

**FRANCES FREDRIC, INVERCARGILL.**

77. Casserole, high temperature earthenware \$ 22.00  
 78. Seven cups and saucers, high temperature earthenware \$ 56.00  
 79. P.C. Ring box, low temperature stoneware \$ 12.00

**JOHN FULLER, FIELDING.**

80. Pot I, stoneware \$ 40.00  
 81. Pot II, stoneware \$ 35.00  
 82. Bowl, stoneware \$ 35.00

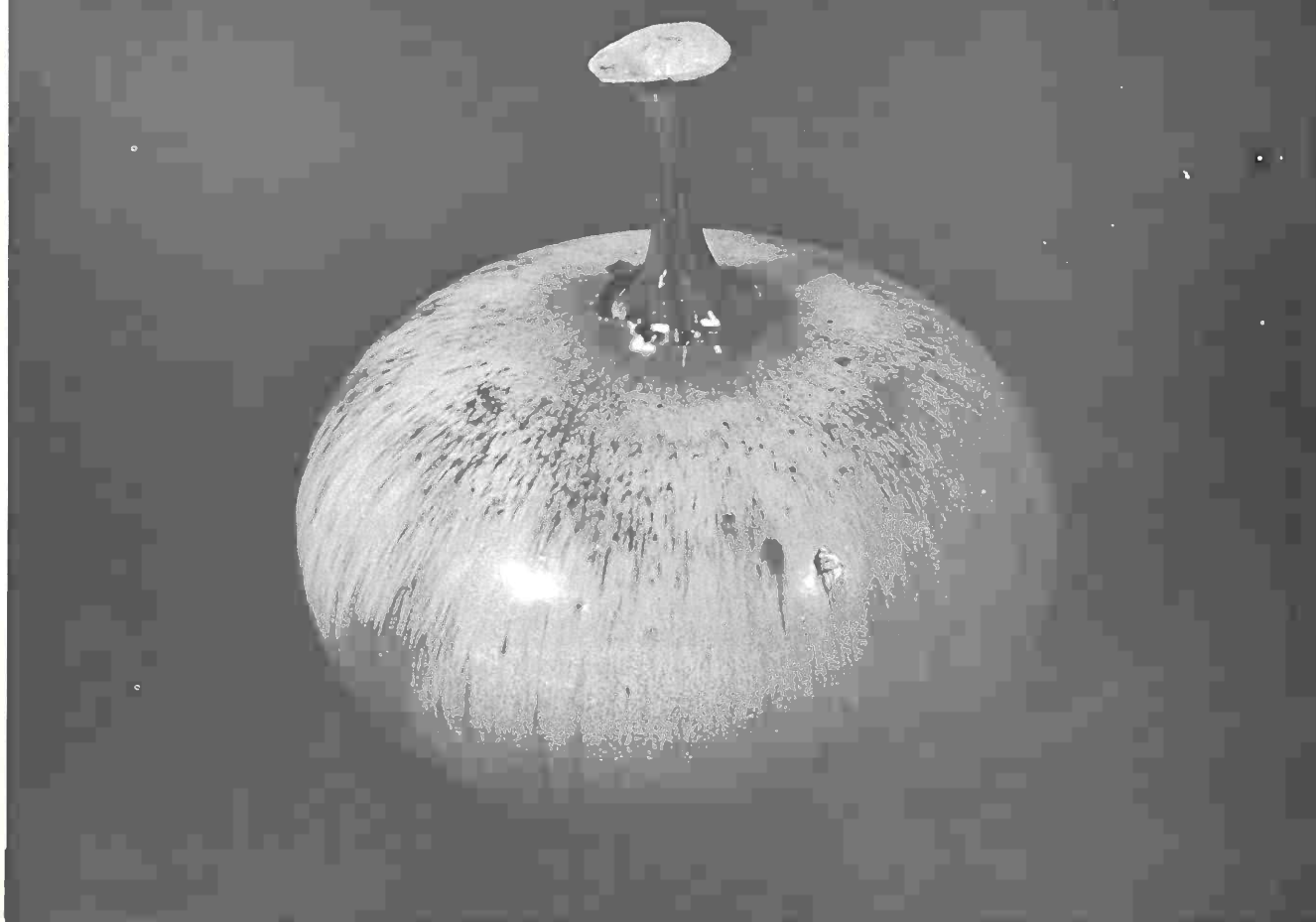
**BRIAN GARTSIDE, PUKEKOHE.**

83. Northshore Landscape, ceramic assemblage \$250.00  
 84. Vase, ceramic assemblage \$150.00  
 85. Vase, ceramic assemblage \$150.00  
 86. P.C. Platter: house with a glass dome, stoneware and epoxy resin \$ 80.00

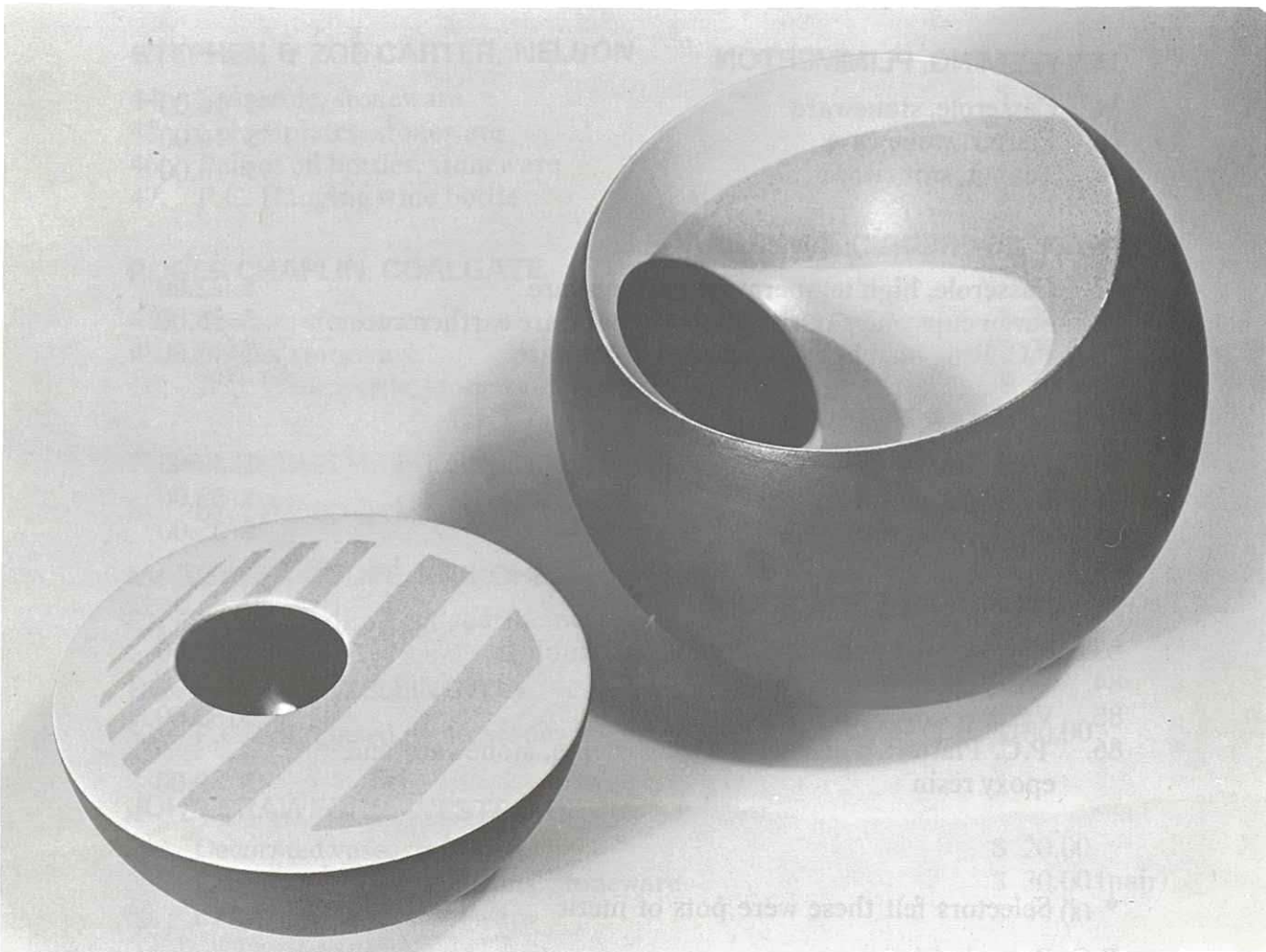
\* Selectors felt these were pots of merit

P.C. Potter's Choice





Ray Rogers



Leo King

**KEVIN GASKILL, HAMILTON.**

- |                                                   |          |
|---------------------------------------------------|----------|
| 87. Bowl, Shing type glaze, translucent porcelain | \$ 18.00 |
| 88. Bowl, Shing type glaze, translucent porcelain | \$ 20.00 |
| 89. Lidded pot, Shing type glaze, porcelain       | \$ 25.00 |
| 90. Dish, Shino type glaze, stoneware             | \$ 18.00 |
| 91. Dish, Shino type glaze, stoneware             | \$ 30.00 |

**PETER GIBBS, TAKAKA.**

- |                                       |          |
|---------------------------------------|----------|
| 92. Teapot, salt glazed stoneware     | \$ 20.00 |
| 93. Wine set, salt glazed stoneware   | \$ 50.00 |
| 94. P.C. Crock, salt glazed stoneware | \$ 55.00 |

**EDNA HANAFIN, CHRISTCHURCH.**

- |                        |          |
|------------------------|----------|
| 95. Hot pot, stoneware | \$ 20.00 |
|------------------------|----------|

**JEAN HASTEDT, PARAPARAUMU.**

- |                                 |          |
|---------------------------------|----------|
| 96. Crock, stoneware            | \$ 50.00 |
| 97. Lidded container, stoneware | \$ 30.00 |
| 98. Teapot, salt glazed         | \$ 35.00 |

**VAL HERCUS, LEVIN.**

- |                                             |          |
|---------------------------------------------|----------|
| 99. Platter, high fired earthenware         | \$ 40.00 |
| 100. Decorative jug, high fired earthenware | \$ 50.00 |
| 101. P.C. Platter, high fired earthenware   | \$ 40.00 |

**MARGARET HIGGS, CHRISTCHURCH.**

- |                                                 |          |
|-------------------------------------------------|----------|
| 102. Pinch and coil pot, stoneware              | \$ 45.00 |
| 103. Slab and coil pot, stoneware and porcelain | \$ 20.00 |

**CHARLES HOLMES, COROMANDEL.**

- |                              |          |
|------------------------------|----------|
| *104. Grass pot, stoneware   | \$ 50.00 |
| 105. Grass pot, stoneware    | \$ 50.00 |
| 106. Grass pot, stoneware    | \$ 48.00 |
| 107. Tile panel, earthenware | \$140.00 |
| 108. Grass pot, stoneware    | \$ 21.00 |

**HENRIETTA HUME, PLIMMERTON.**

- |                                   |          |
|-----------------------------------|----------|
| 109. Orbitor, handbuilt stoneware | \$ 30.00 |
|-----------------------------------|----------|

**MAVIS JACK, TAUPO.**

- |                                          |          |
|------------------------------------------|----------|
| 110. P.C. Large goblet vase, earthenware | \$ 25.00 |
|------------------------------------------|----------|

**STAN JENKINS, FIELDING.**

- |                      |          |
|----------------------|----------|
| 111. Bowl, stoneware | \$ 16.00 |
| 112. P.C. Vase       | \$ 16.00 |

\* Selectors felt these were pots of merit  
P.C. Potter's Choice



**LEO KING, AUCKLAND.**

- \*113. Black sphere, high fired earthenware \$110.00
- \*114. Vortex I, high fired earthenware \$ 70.00
- 115. Aura II, high fired earthenware \$ 50.00
- 116. Aura III, high fired earthenware \$ 35.00
- \*117. Luxor III, high fired earthenware \$ 45.00

**BRUCE LISSANT-CLAYTON, NELSON.**

- 118. P.C. Large floor vase, stoneware \$110.00

**AUDREY LISSETTE, LEVIN.**

- 119. Lunar Form Large, earthenware \$ 50.00
- 120. Lunar Form Small, earthenware \$ 20.00
- 121. Plate, earthenware \$ 22.00

**BEVERLEY LUXTON, HOWICK.**

- 122. Pierced pot, porcelain \$ 20.00
- 123. Pierced pot, porcelain \$ 15.00
- 124. Frilled pot, porcelain \$ 15.00
- 125. Frilled bowl, porcelain \$ 12.00
- 126. Frilled bowl, porcelain \$ 12.00

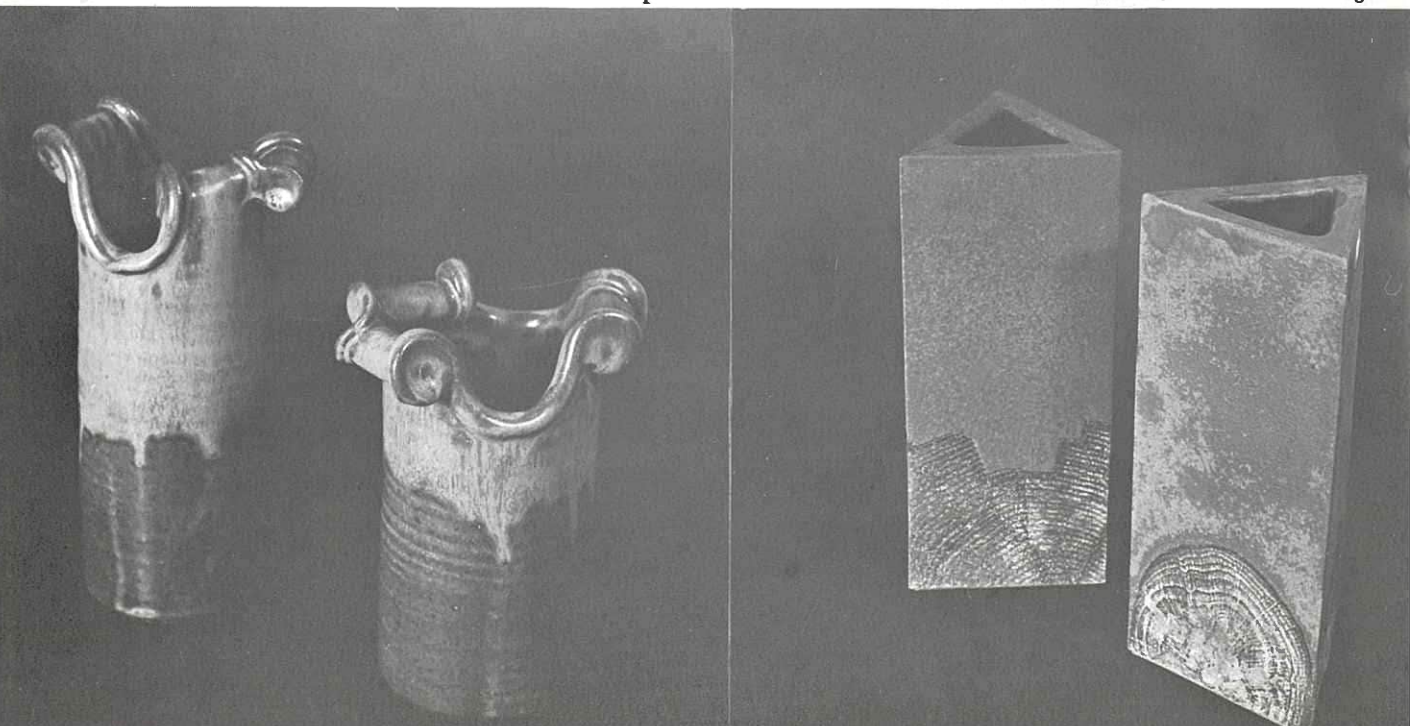
**ANNE McCARTNEY, HAMILTON.**

- 127. Cylinder I, stoneware \$ 18.00
- 128. Cylinder II, stoneware \$ 15.00
- 129. Cylinder III, stoneware \$ 15.00
- \*130. Sphere, stoneware \$ 20.00

**GLENYS MARSHALL-INMAN, BUCKLANDS BEACH.**

- 131. Three children's money boxes, stoneware \$ 45.00 (set)
- 132. Small swaggy, stoneware \$ 35.00
- 133. Set of two storage jars, stoneware \$ 37.00
- 134. P.C. Large swaggy and friend \$150.00

John Crawford      \*      Selectors felt these were pots of merit      P.C. Potter's Choice      Keith Blight

**HELEN MASON, TOKOMARU BAY.**

- 135. Dishes for a feast II, stoneware \$ 25.00
- 136. Dishes for a feast III, stoneware \$ 25.00
- 137. P.C. Casserole, stoneware \$ 20.00

**BETTY MAXWELL, MAIRANGI BAY.**

- 138. Teapot, stoneware \$ 11.00
- 139. Serving dish, stoneware \$ 20.00
- 140. P.C. Branch pot \$ 50.00

**PATTI MEADS, WELLINGTON.**

- 141. Large lustre box, porcelain \$ 36.00
- 142. Pair of lustre boxes, porcelain \$ 52.00

**VICTOR MIDDLEMISS, INVERCARGILL.**

- 143. Set of four bottles, high fired earthenware \$ 45.00
- 144. P.C. Blue jar, high fired earthenware \$ 50.00

**JOHN MITCHELL, AUCKLAND.**

- 145. Bowl, stoneware \$ 60.00
- 146. Bowl, stoneware \$ 25.00
- 147. P.C. Jar, slip decorated \$ 28.00

**GAELEEN MORLEY, TARADALE.**

- 148. Bowl, stoneware \$ 15.00
- 149. Spout bottle, stoneware \$ 8.00

**RHONA MORTON, WELLINGTON.**

- 150. P.C. Carved bowl, stoneware \$ 13.00

**GUY MOUNTAIN, KATIKATI.**

- 151. Bowl, stoneware \$ 35.00
- 152. Bowl, stoneware \$ 35.00
- 153. Jar, stoneware \$ 15.00
- 154. P.C. Jar, stoneware \$ 40.00

**RENTON MURRAY, ORATIA.**

- 155. Bread crock, salt glaze \$ 60.00
- 156. Pie dish, salt glaze \$ 20.00
- 157. Set of four bowls, salt glaze \$ 22.00
- 158. Cut sided box, salt glazed porcelain \$ 20.00
- 159. Teapot, salt glaze \$ 31.00

**JEAN NICHOL, CHRISTCHURCH.**

- 160. Teapot, ash glazed stoneware \$ 20.00

**JOYCE OLIVER, AUCKLAND.**

- 161. Teapot, cane handle, stoneware \$ 20.00
- 162. Teapot, cane handle, stoneware \$ 18.00
- 163. Teapot, cane handle, stoneware \$ 18.00

P.C. Potter's Choice



**ROSEMARY PERRY, CHRISTCHURCH.**

- 164. Celadon oil bottle, porcelain \$ 20.00
- 165. Bowl, porcelain \$ 30.00
- 166. Pair of triangular bowls, porcelain \$ 28.00
- 167. Whistling Bird pot, porcelain \$ 28.00

**COYLA RADCLIFFE-OLIVER, CHRISTCHURCH.**

- 168. P.C. Hand built bowl, stoneware \$ 19.00

**MARGARET RADFORD, HAMILTON.**

- 169. Twig pot, thrown porcelain \$ 15.00
- 170. Twig pot, thrown and pinched porcelain \$ 20.00
- 171. Bowl, thrown and pinched porcelain \$ 15.00
- 172. Bowl, thrown and pinched porcelain \$ 15.00
- 173. P.C. Trinket box, thrown porcelain \$ 20.00

**RAY ROGERS, WAIMAUKU.**

- 174. Trio — cucurbitaceous bottles, stoneware \$260.00
- 175. Bowl — underglaze decoration, stoneware \$ 75.00
- 176. Bowl, stoneware \$ 50.00

**DENIS AND FAIRLIE ROWE, NAPIER.**

- 177. Three fledglings, handbuilt, stoneware \$ 30.00
- 178. Wine-jar and drip pot, thrown stoneware \$ 30.00
- 179. P.C. 'Accidents Do Happen', salt glazed stoneware \$ 40.00

**UNA SHARPLEY, PAPAURA.**

- 180. Lustred smoked jewel bowl, lowfire \$ 15.00
- 181. Lustred smoked jewel bowl, lowfire \$ 15.00
- 182. P.C. Lustred smoked jewel bowl, low fire \$ 15.00

**JENNY SHEARER, NGAIO.**

- 183. Six dessert dishes, porcelain \$ 36.00
- 184. Trinket box, porcelain \$ 15.00
- 185. Casserole, stoneware \$ 28.00

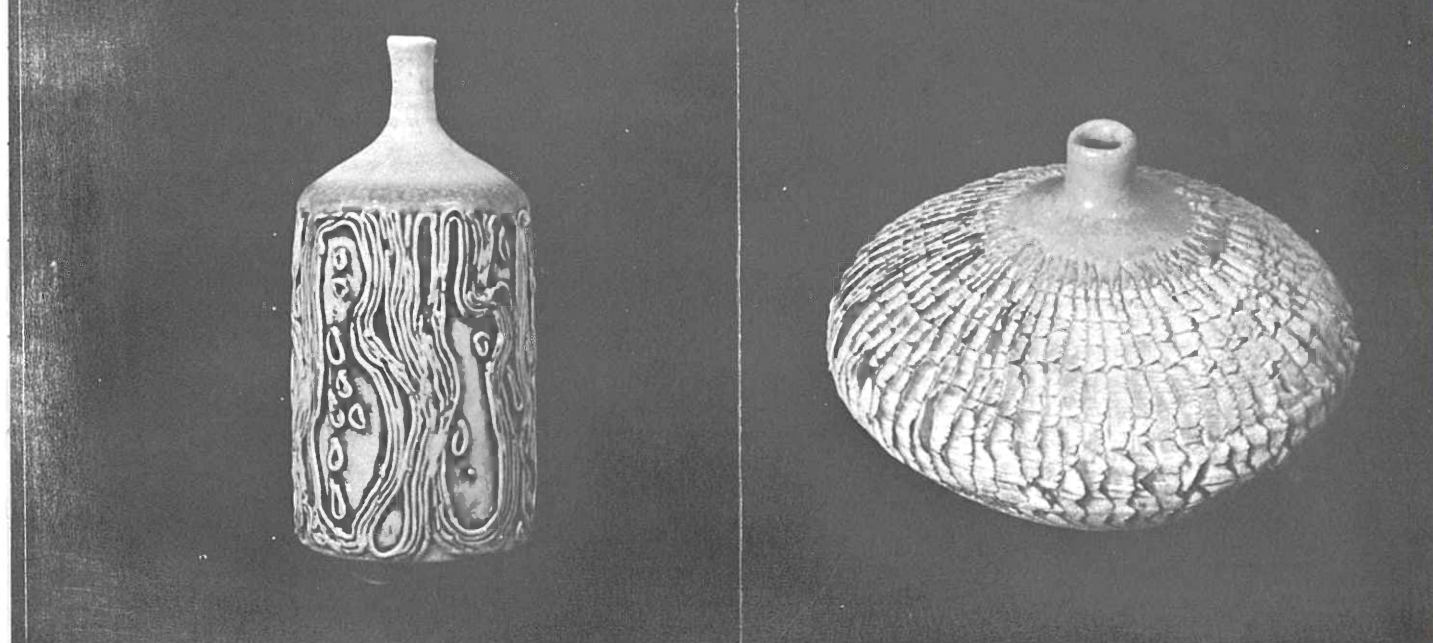
**MIREK SMISEK, TE HORO.**

- 186. Bowl, ash glaze \$ 65.00
- 187. Bowl, ash glaze \$ 30.00
- 188. Two bowls, ash glaze \$ 60.00
- 189. P.C. Bowl, salt glaze \$ 50.00

**LYNN SPENCER, OKATO.**

- 190. Casserole, stoneware \$ 35.00
- 191. Casserole, stoneware \$ 20.00
- 192. Set of two storage jars, stoneware \$ 32.00
- 193. Bowl, stoneware \$ 45.00

P.C. Potter's Choice



Margaret Radford

Doris Dutch

**MIKE SPENCER, OKATO.**

- 194. Casserole, stoneware \$ 30.00
- 195. Teapot, stoneware \$ 25.00
- 196. Dish, stoneware \$ 40.00
- 197. Dish, stoneware \$ 40.00
- 198. Six plates, stoneware \$ 54.00

**IRENE SPILLER, CHRISTCHURCH.**

- 199. Small bowl, decorative porcelain \$ 16.00
- 200. P.C. Sea form pot, decorative porcelain \$ 35.00

**PETER STICHBURY, MANUREWA**

- 201. Platter, domestic stoneware \$ 45.00
- 202. Wine set — nine piece, stoneware \$ 65.00
- \*203. Pair of serving dishes, stoneware \$ 46.00
- 204. Bowl set — nine pieces \$ 75.00
- 205. P.C. Teapot \$ 30.00

**GRAEME STORM, AUCKLAND.**

- 206. Pot — incised slip decoration, stoneware \$250.00
- 207. Bowl — wax resist decoration, stoneware \$ 55.00
- 208. Lidded box — blue and white, stoneware \$ 47.00
- 209. Lidded box — blue and white, stoneware \$ 47.00
- \*210. Lidded box — incised slip, porcelain \$ 55.00

**DONALD THORNLEY, KUMEU.**

- 211. Tablet vase, stoneware \$ 50.00
- 212. Bowl, stoneware \$ 25.00
- 213. Tablet container, stoneware \$ 50.00

**WARREN TIPPETT, ALBANY.**

- 214. Fluted bottle — blue, salt glaze \$ 48.00
- 215. Jar, salt glaze \$ 38.00
- 216. Decorated bottle, stoneware \$ 35.00
- 217. Decorated bowl, stoneware \$ 42.00

\* Selectors felt these were pots of merit

P.C. Potter's Choice





Leo King



Peter Stitchbury

**MARI TOTHILL, CHRISTCHURCH.**

- |                         |          |
|-------------------------|----------|
| 218. Casserole          | \$ 20.00 |
| 219. Casserole          | \$ 18.00 |
| 220. Set of seven bowls | \$ 40.00 |
| 221. Plate              | \$ 18.00 |

**ARIE VAN DYK, SILVERSTREAM.**

- |                             |          |
|-----------------------------|----------|
| 222. Terrace pot, stoneware | \$240.00 |
|-----------------------------|----------|

**PETER WILDE, PALMERSTON NORTH.**

- |                      |          |
|----------------------|----------|
| 223. P.C. Fruit bowl | \$ 45.00 |
|----------------------|----------|

**JOAN WILEY, WELLINGTON.**

- |                                    |          |
|------------------------------------|----------|
| 224. Sea form, pinch pot stoneware | \$ 12.00 |
|------------------------------------|----------|

**MARCIA WILKINSON, NAPIER.**

- |                        |          |
|------------------------|----------|
| 225. Dish, earthenware | \$ 18.00 |
| 226. Dish, earthenware | \$ 10.00 |
| 227. Dish, earthenware | \$ 10.00 |
| 228. Dish, earthenware | \$ 15.00 |

P.C. Potter's Choice

## New Zealand Society of Potters Executive Council

|                        |                |
|------------------------|----------------|
| BRUCE MARTIN, Hastings | President      |
| STAN JENKINS, Manawatu | Vice President |
| ROY COWAN, Wellington  | Vice President |
| DES THOMPSON, Hastings | Secretary      |

GENNIE DE LANGE, Canterbury  
 JOHN PARKER, Auckland  
 FLORA CHRISTELLER, Wellington  
 PEGGY JUDGE, Waikato  
 JUDY PAIRMAN, Otago  
 FRANCES FREDERIC, Southland









**Waikato Art Museum**