

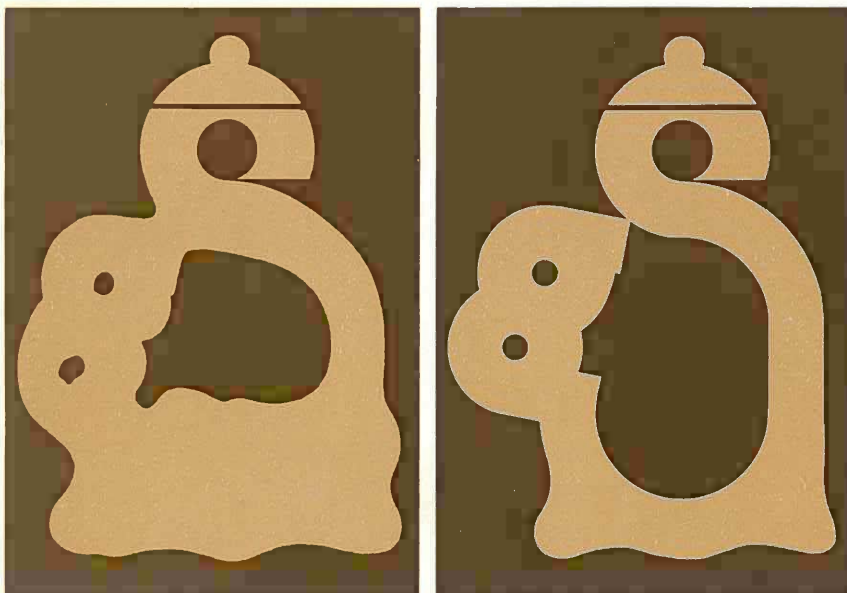
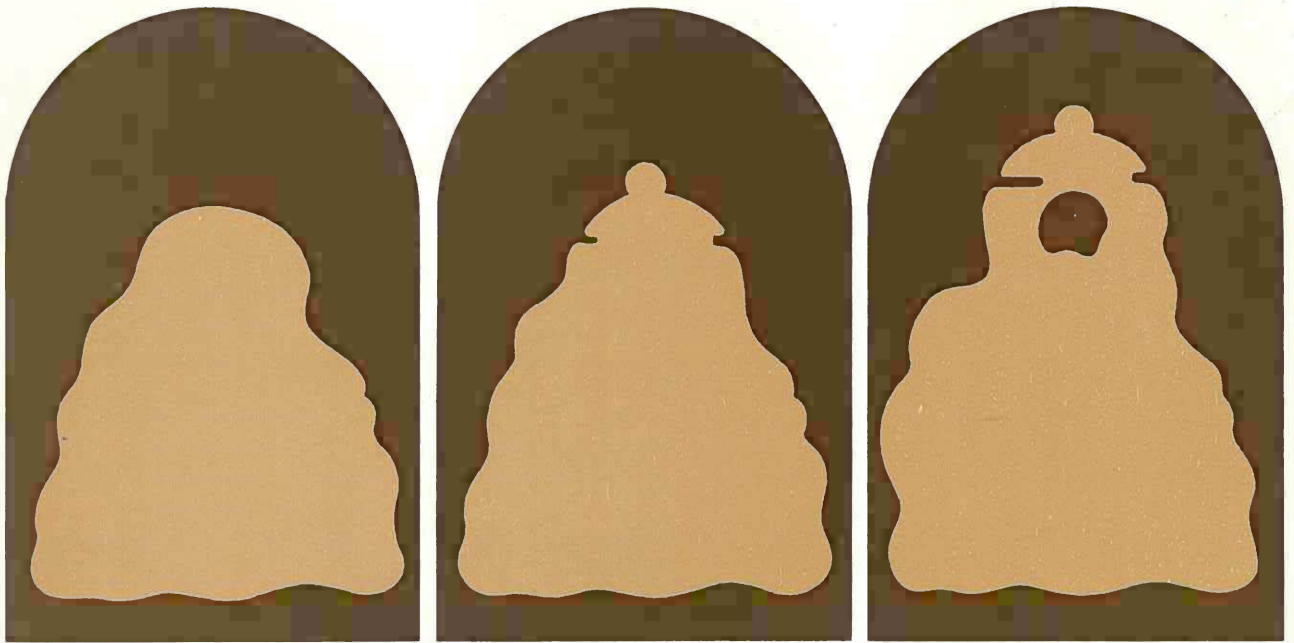
N. Barron

# 22nd National Exhibition

Oct 21 - Nov 11

## New Zealand Society of Potters

79



Victoria Avenue, Invercargill

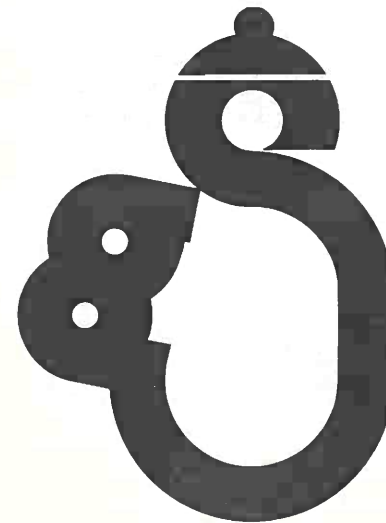
Southland Museum

"I AM NOT NOW, THAT WHICH I HAVE BEEN, I AM NOW A WORK OF ART."

**N.Z. SOCIETY OF POTTERS INC.**  
**22nd NATIONAL EXHIBITION 1979**

OCTOBER 21 to NOVEMBER 11

Southland Museum and Art Gallery  
Victoria Avenue  
Invercargill



Museum hours 10.00 a.m. to 4.30 p.m.  
1.00 p.m. to 5.00 p.m. Saturdays  
2.00 p.m. to 5.00 p.m. Sundays  
and Labour Day





GUEST POTTER VIC GREENAWAY, from Beaconsfield, Victoria, born in 1947 in Sale, Victoria, established his first workshop in 1968, and in 1974 travelled overseas on a Churchill Fellowship visiting Japan, Scandinavian Countries and the U.K. While in Japan he studied under Tatsuzo Shimoaka. On returning to Australia he established his new pottery at Broomhill with the assistance of a Crafts Board grant. In 1976 he commenced a programme of training young potters, and at present works with three trainees. He won in 1966 the Kelvin Award for pottery, in 1967 Made in Australia design award, 1972 Shell award for pottery, 1974 Churchill Fellowship and in 1976 an International Ceramics award at Faenza, Italy.

He was represented in the International Collection of Ceramics 1972, in the Victoria and Albert Museum, London, and has exhibited in the main cities of Australia. His work is to be found in the permanent collection of many galleries throughout Australia including National Galleries of Victoria, Canberra and Queensland, the Crafts Board collection, Arts Victoria Festival collection, Western Australia Institute of Technology collection and in the private collection of Princess Beatrix of Royal Netherlands Palace.



**Vic Greenaway — GUEST POTTER**

Upper Beaconsfield, Victoria, Australia.

1	Ovoid Jar . . . . .	\$200
2	Plate . . . . .	\$150
3	Spherical Jar . . . . .	\$120
4	Spherical Jar . . . . .	\$90
5	Spherical Jar . . . . .	\$55
6	Steamer . . . . .	\$48
7	Lidded Jar—White . . . . .	\$70
8	Lidded Jar—White . . . . .	\$65
9	Lidded Jar—dry surface . . . . .	\$55
10	Lidded Jar—dry surface . . . . .	\$55
11	Teapot . . . . .	\$36
12	Lidded Jar—dry surface . . . . .	\$50
13	Lidded Jar—blue . . . . .	\$40
14	Small dish . . . . .	\$15
15	Plate . . . . .	\$40
16	Bowl . . . . .	\$40
17	Bowl . . . . .	\$30
18	Bowl . . . . .	\$30
19	Pitcher . . . . .	\$55
20	Large lidded jar . . . . .	\$250

**David Atkinson**

Stoneware

Weston

21	Bottle vase . . . . .	\$25
22	Kitchen Pot . . . . .	\$20
23	Casserole . . . . .	\$20
24	Lidded Jar . . . . .	\$8

**Barry Ball**

Stoneware

Te Kuiti

25	Bowl . . . . .	\$25
26	Bottle . . . . .	\$15
27	Crock . . . . .	\$45
28	3 Sgraffito decorated bowls—earthenware . . . . .	\$45

**Nola Barron**

Stoneware

Christchurch

29	Split form . . . . .	\$75
----	----------------------	------

**Jan Bell**

Stoneware

Havelock North

30	Crock . . . . .	\$80
31	Jug . . . . .	\$14
32	Bottle . . . . .	\$12

**Keith Blight**

Stoneware

Auckland

33	Circles—cylinder . . . . .	\$48
34	Pair blue-green bottles . . . . .	\$55
35	Impression of nature—sculptural form . . . . .	\$85
36	Impression of nature—sculptural form . . . . .	\$80
37	Impression of nature—sculptural form . . . . .	\$65

**Doreen Blumhardt**

Stoneware

Wellington

38	Dish . . . . .	\$65
39	Dish . . . . .	\$27
40	Bottle . . . . .	\$60

**Richard Booker**

Stoneware

Dunedin

41	Crock . . . . .	\$45
42	Bottle . . . . .	\$25
43	Lidded jar . . . . .	\$25
44	Lidded jar . . . . .	\$20
45	Vase . . . . .	\$25
46	Set of 6 coffee mugs . . . . .	\$25



**Irene Boulton**

Christchurch

47	Glazed reversible necklace	. . . . .	\$.45
48	Glazed reversible necklace	. . . . .	\$.45
49	Glazed reversible necklace	. . . . .	\$.40
50	Glazed reversible necklace	. . . . .	\$.40
51	Glazed reversible necklace	. . . . .	\$.40

**Barry Brickell**

Coromandel

Stoneware

52	"Sand-dome" lidded jars	. . . . . \$30 each set of 4	\$100
53	Fatso jug	. . . . .	\$.75

**Roger Brittain**

Auckland

Stoneware

54	Coiled pot	. . . . .	\$.55
----	------------	-----------	-------

**Rosemarie Brittain**

Auckland

Porcelain

55	Pair of tree forms	. . . . .	\$.20
56	3 little fishes	. . . . .	\$.25
57	Fish	. . . . .	\$.15
58	Paperweight—fish	. . . . .	\$.12
59	Pair of fish bottles	. . . . .	\$.12

**David Brokenshire**

Christchurch

Porcelain

60	Flower bowl	. . . . .	\$.40
61	Flower bowl	. . . . .	\$.35
62	Flower bowl	. . . . .	\$.25
63	Flower bowl	. . . . .	\$.25

**Jane Capon**

New Plymouth

Stoneware

64	Bottle I	. . . . .	N.F.S.
65	Bottle II	. . . . .	\$.75

**Gillian Carruthers**

Auckland

Stoneware

66	Bowl	. . . . .	\$.25
67	Cups and Saucers	. . . . .	\$.36

**Stephen Carter**

Nelson

Stoneware

68	Hand-made tiled table	. . . . .	\$250
69	5 pint casserole	. . . . .	\$.35
70	Blue jar	. . . . .	\$.20
71	Ash jar	. . . . .	\$.20

**Flora Christeller**

Wellington

Stoneware

72	Pair of small lidded jars	. . . . .	\$.12
73	Crock	. . . . .	\$.70
74	Platter	. . . . .	\$.35
75	Bowl	. . . . .	\$.45

**Sally Connolly**

Christchurch

Porcelainous Stoneware

76	Carved wall pot	. . . . .	\$.35
77	Carved wall pot	. . . . .	\$.45
78	Flower holder	. . . . .	\$.20
79	Wall flower holder	. . . . .	\$.40

**Brian Cooke**

Rangiora

Stoneware

80	Bowl	. . . . .	\$.36
81	Soup tureen & 8 bowls	. . . . .	\$.58
82	Casserole	. . . . .	\$.28
83	Bottle	. . . . .	\$.22

**Roy Cowan**

Wellington

Stoneware

84	Platter—aventurine glaze, titanium decoration	. . . . .	\$.52
85	Platter—aventurine glaze, titanium decoration	. . . . .	\$.52

**John Crawford**

Granity

Stoneware

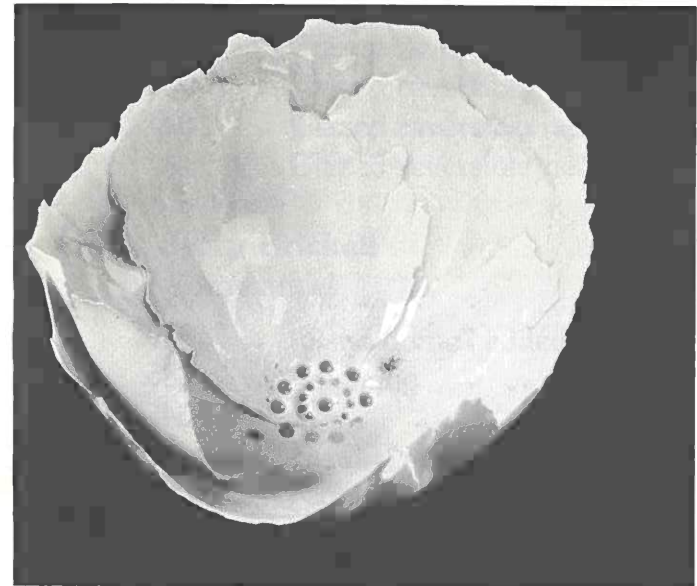
86	Pair (blue delicious)	. . . . .	\$.40
87	Ware pot	. . . . .	\$.69
88	Vase with merging flowers	. . . . .	\$.25
89	Bottle—landscape	. . . . .	\$.22

**Doris Dutch**

Auckland

Stoneware

90	Chun bowl	. . . . .	\$.20
91	Chun bowl	. . . . .	\$.16
92	Chun plate	. . . . .	\$.19
93	Container—Porcelain	. . . . .	\$.25
94	Bottle—Porcelain	. . . . .	\$.20



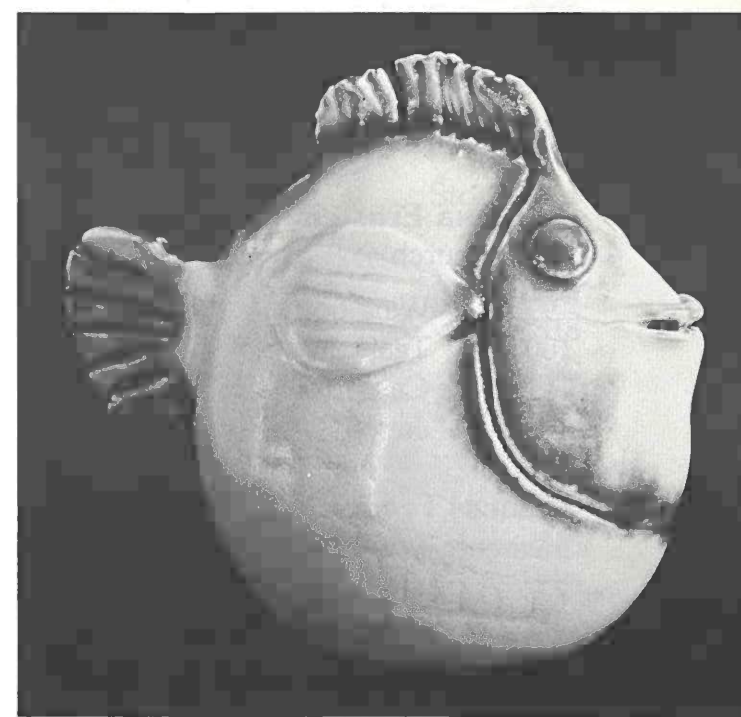
David Brokenshire



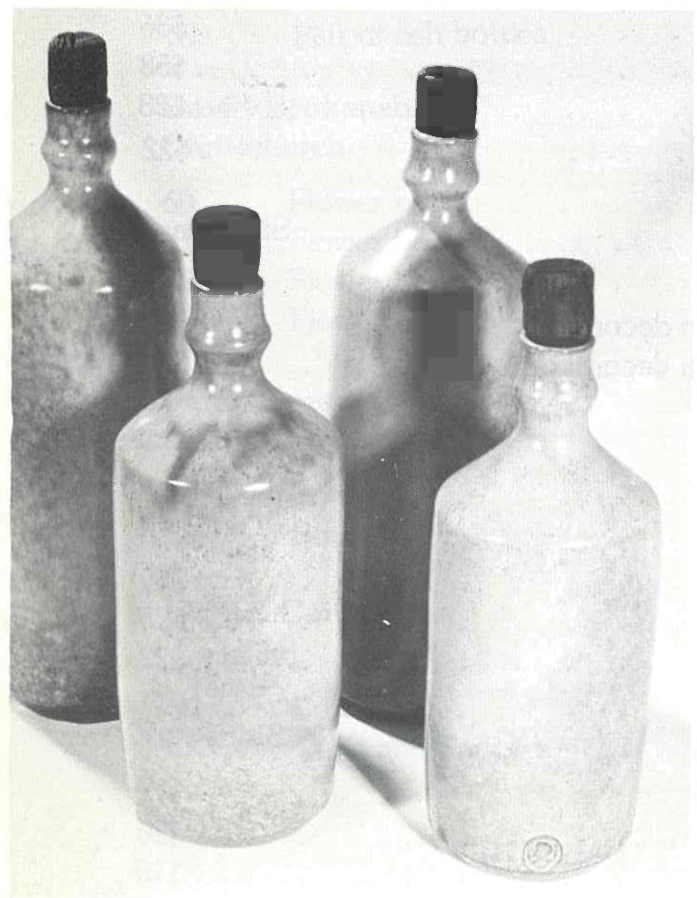
Michael Lucas and Jill Totty



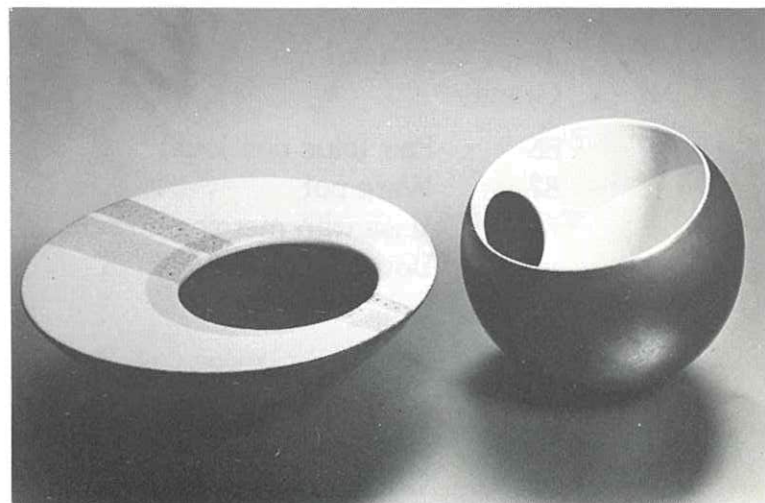
Brian Cooke



Rosemarie Brittain



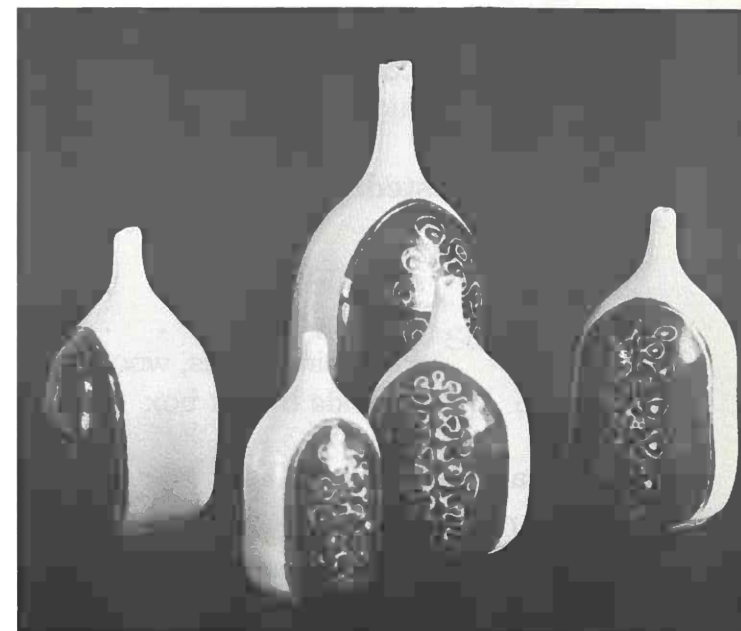
Vic Middlemiss



Leo King



John Crawford



Jenny Shearer



<b>Olwyn Dykes</b>	Low Temperature Stoneware	
Invercargill		
95	Ringbox . . . . .	\$18
96	Set of 6 bowls . . . . .	\$42
97	Plate—cobalt brushwork . . . . .	\$30
98	Plate—wax resist . . . . .	\$30

<b>Fredrika Ernsten</b>	Stoneware	
Christchurch		
99	Wine bottle . . . . .	\$22
100	Teapot . . . . .	\$25
101	Casserole . . . . .	\$28
102	Jar . . . . .	\$22

<b>Frances Fredric</b>	Low Temperature Stoneware	
Invercargill		
103	Casserole . . . . .	\$28
104	Trinket boxes (3) . . . . .	\$28
105	Bowl . . . . .	\$30

<b>Kevin Gaskell</b>	Porcelain	
Hamilton		
106	Lidded box . . . . .	\$28
107	Lidded box . . . . .	\$25
108	Lidded box . . . . .	\$16
109	Bowl . . . . .	\$23
110	Bowl . . . . .	\$35

<b>Peter Gibbs</b>	Stoneware	
Brightwater		
111	Casserole . . . . .	\$18
112	Jug . . . . .	\$6

<b>Jean Hastedt</b>	Stoneware	
Paraparaumu		
113	Crackle teapot . . . . .	\$24
114	Crackle bowl . . . . .	\$12
115	Pair shino plates, wood fumed . . . . .	\$25
116	Crackle trinket box . . . . .	N.F.S.

<b>Margaret Higgs</b>	Stoneware	
Christchurch		
117	Bowl . . . . .	\$35

<b>Mary Hardwick-Smith</b>	Stoneware	
Auckland		
118	Soupbowl & plate set (8 pieces) . . . . .	\$36
119	Two margarine pots . . . . .	\$16
120	Set of 6 ramekins . . . . .	\$18
121	Set of 3 small plates . . . . .	\$9

<b>Stan Jenkins</b>	Stoneware	
Feilding		
122	Planet pot I . . . . .	\$25
123	Planet pot II . . . . .	\$18

<b>Beryl Jowett</b>	Stoneware	
Dunedin		
124	Set of 6 cups & saucers, milk jug, sugar basin . . . . .	\$45
125	Jug . . . . .	\$18
126	Flared bowl . . . . .	\$25
127	Bowl . . . . .	\$25

<b>Wayne Junghenn</b>	Stoneware	
Wedderburn Australia		
128	Water vessel . . . . .	\$35
129	Bottle . . . . .	\$18

<b>Leo King</b>	High fired earthenware	
Auckland		
130	Luxor II . . . . .	\$85
131	Luxor IV . . . . .	\$45
132	Vortex VII . . . . .	\$45
133	Cone I . . . . .	\$65

<b>Jack Laird</b>	Stoneware	
Nelson		
134	Wine jar and goblets (5) . . . . .	\$130
135	Jug . . . . .	\$30
136	Granny Iron Kettle . . . . .	\$30

<b>Adrienne Lamb</b>	Stoneware	
Loburn		
137	Jug . . . . .	\$9
138	Tankards (5) . . . . .	\$20

<b>Michael Lucas &amp; Jill Totty</b>	Stoneware
Auckland	
139	Shakespeare "on taxes" . . . . . \$250
140	Tiberius Caesar "on taxes" . . . . . \$75
141	Sign of the Times (An open letter to the customs department) . \$50
142	Ben Jonson "on Arte" . . . . . \$65
143	Puzzle jug . . . . . \$50

<b>Beverley Luxton</b>	Porcelain
Auckland	
144	Lustred bowl . . . . . \$25
145	Lustred trinket box . . . . . \$21
146	Lustred trinket box . . . . . \$20
147	Bowl . . . . . \$12
148	Bowl . . . . . \$10

<b>Val McArthur</b>	Stoneware
Hamilton	
149	Teapot . . . . . \$24
150	Gravy boat & saucer . . . . . \$11
151	Casserole . . . . . \$24
152	Platter . . . . . \$28
153	Oil bottle . . . . . \$9

<b>Hazel McCaughern</b>	Stoneware
Christchurch	
154	Wine jar . . . . . \$35
155	Bowl . . . . . \$40
156	Small bowl . . . . . \$10

<b>Bruce Martin</b>	Stoneware
Hastings	
157	Floral container (boat) . . . . . \$55
158	Square plate . . . . . \$35

<b>Patti Meads</b>	Porcelain
Wellington	
159	Lustre bottle & precious egg . . . . . \$75
160	Lustre bottle . . . . . \$55
161	Pair of precious eggs . . . . . \$60
162	Lustre plate . . . . . \$65

<b>Rhona Morton</b>	Stoneware
Wellington	
163	Casserole . . . . . \$16

<b>Victor T. Middlemiss</b>	Earthenware
Invercargill	
164	Set of bottles (4) . . . . . \$50
165	Jar . . . . . \$55
166	Fluted bottle . . . . . \$25

<b>John Mitchell</b>	Stoneware
Auckland	
167	Crock . . . . . \$35
168	Platter . . . . . \$35
169	Platter . . . . . \$18

<b>John Parker</b>	
Auckland	
170	Bronze bowl . . . . . \$35
171	Bronze bowl . . . . . \$45
172	Bronze bottle . . . . . \$27
173	Bronze bottle . . . . . \$25
174	Bronze bottle . . . . . \$25
175	Agate bottle . . . . . \$27

<b>Rosemary Perry</b>	Porcelain
Christchurch	
176	Pickled onion jar with fork . . . . . \$38
177	Pair triangular bowls . . . . . \$28
178	Celadon bowl . . . . . \$30
179	Celadon oil bottle . . . . . \$25
180	Celadon plate . . . . . \$25

<b>Juliet Peter</b>	Stoneware
Wellington	
181	Fruitbowl—salt glaze . . . . . \$22

<b>Ray Rogers</b>	Stoneware
Auckland	
182	Jar . . . . . \$190
183	Shallow bowl—incised rim . . . . . \$65
184	Casserole . . . . . \$48
185	Jar . . . . . \$40
186	Bowl—shino . . . . . \$65
187	Box . . . . . \$20



<b>Rick Rudd</b>		Raku
Auckland		
188	Raku No. 154	. . . . . \$95
189	Raku No. 155	. . . . . \$45
190	Raku No. 156	. . . . . \$55
191	Raku No. 163	. . . . . \$55
192	Raku No. 164	. . . . . \$65
193	Raku No. 165	. . . . . \$60

<b>Una Sharpley</b>		Stoneware
Papakura		
194	Wine set—7 pieces	. . . . . \$45

<b>Jenny Shearer</b>		Porcelain
Wellington		
195	Bowl & trinket box	. . . . . \$35
196	Set of 6 cups & saucers	. . . . . \$49
197	6 cup teapot	. . . . . \$26
198	Bottle family—5 pieces	. . . . . \$32

<b>Mirek Smisek</b>		Stoneware
Te Horo		
199	Platter—ash glaze	. . . . . \$65
200	8 bowls—wax resist	. . . . . \$64
201	Bowl—ash glaze	. . . . . \$25
202	Bowl—raw porcelain	. . . . . \$30

<b>Mike Spencer</b>		Stoneware
Okato		
203	Oven dish	. . . . . \$16
204	Small plates—set of 8	. . . . . \$64

<b>Don Thornley</b>		Stoneware
Auckland		
205	Trinket box	. . . . . \$20
206	Tablet	. . . . . \$50
207	Slab bottle	. . . . . \$50

<b>Mari Tohill</b>		High-fired Earthenware
Christchurch		
208	Bowl	. . . . . \$20
209	Plate	. . . . . \$20
210	Pair of lidded jars	. . . . . \$24
211	Casserole	. . . . . \$20

<b>Rex Valentine</b>		Stoneware
Lyttelton		
212	Tea bowl	. . . . . \$30
213	Teapot	. . . . . \$34
214	Vase	. . . . . \$18
215	Hanging vase	. . . . . \$25
216	Pair of bowls	. . . . . \$28
217	Platter	. . . . . \$75

<b>Melis van der Sluis</b>		Stoneware
Hamilton		
218	Platter	. . . . . \$60
219	Decorated square pot	. . . . . \$50
220	Decorated shallow dish	. . . . . \$75
221	Bottle form	. . . . . \$30
222	Oval pot	. . . . . \$45

<b>Arie van Dyk</b>		Stoneware
Silverstream		
223	Urn	. . . . . \$200
224	Bowl—salt glazed	. . . . . \$200
225	Illuminated plant hanger	. . . . . \$200

<b>Sally Vinson</b>		
Auckland		
226	3 oil & vinegar bottles—A, B & C	. . . . . \$10 each
227	2 oil & vinegar bottles—A, & B	. . . . . \$12 each
228	3 oil & vinegar bottles—A, B & C	. . . . . \$15 each
229	Decorative stoppered bottle for wine	. . . . . \$25
230	Decorative stoppered bottle for wine	. . . . . \$25

<b>Denise Welsford</b>		Stoneware
Lyttelton		
231	Bowl	. . . . . \$12
232	Bowl	. . . . . \$12
233	Casserole	. . . . . \$25
234	Jar	. . . . . \$25

## EXHIBITION SALES—opening night

Intending buyers must collect the ticket bearing the catalogue number of the item from the appropriate seller. The ticket must then be presented at the sales desk so that the purchase may be recorded. Payment should be made at this time. Purchased pots should be collected from the Museum on Monday November 12 between 10.00 a.m. and 4.30 p.m.

## HANDCRAFT EXHIBITION

The Museum has arranged a small exhibition of the work of several local crafts-people, to be on display for the duration of the National Potters' Exhibition. This may be seen in the Museum and catalogues are available at the desk.

### The N.Z. Society of Potters Inc. Council 1979

President	Leo King
Vice Presidents	Roy Cowan Ray Rogers Russell Toplis
Secretary	
<b>Regional Representatives:</b>	
Auckland	Michael Lucas
Waikato	Peggy Judge
Wellington	Patti Meads
Canterbury	Fredrika Ernsten
Otago	Richard Booker
Southland	Frances Fredric

### 22nd EXHIBITION COMMITTEE 1979

Chairman	Reg Baxter
Secretary	Barbara Gray
Treasurer	Meg Craig
Receiving Officer	Alan Young
Transport	Jeanette Goomes Joyce Brown
Accommodation	Margaret Basher
Entertainment and Catering	Ann Bain
Publicity and Advertising	Grace Watson Murray Fox
Display, Catalogues and Invitations	Olwyn Dykes Frances Fredric
Photography	Lindsay Hazley

The Council of The New Zealand Society

The Council of The New Zealand Society of Potters wishes to express its appreciation to the Director and Staff of the Southland Museum and Art Gallery for the great contribution they have made. Their co-operation and assistance in staging this 22nd Exhibition is gratefully acknowledged.

The Society would also like to express its sincere thanks to the following for their contributions:

Invercargill Licensing Trust	Andrew Lees
Potters' Clay Ltd, Nelson	N. Lawson
Community Arts Council	Windsor Furniture Co.
Southern Regional Arts Council	Cottage Crafts
Southern Ceramic Import Co.	E. Hayes and Sons
Ceramic Club (Southland)	Bruce Thomson Ltd
Southland Potters' Association	Rice Refrigeration
Southern Potters' Club	Spectrum Floral Studio
Waiau Potters' Club	Tony Johnson Ltd
Otautau Potters' Club	McSkimmings
Lumsden Potters' Group	Crosbies Garage
Poultry Farmers' Co-op.	Furnace Engineering Co
Port Craig Timber Co.	Hart Motors
J.E. Watson Ltd	G. R. Holden
Whitcoulls	H. & J. Smiths
V.T.R. Motors	Alan Young Panelbeating
Broad Small Ltd	Graham Motors
Southland Savings Bank	Smith Brown & Maple
Tappers Ltd	L. Cowley
J.T. Sharp and Sons	Craig Printing Co.
Ernest Adams Ltd	Invercargill City Council
Craft Gallery	R. G. Dykes
Which Craft	Broadcasting Corporation of New Zealand
Motor Specialties	Reins Jewellers.
Wm Todd and Co	



