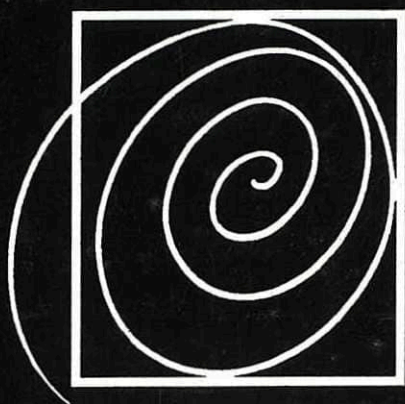


NEW ZEALAND
SOCIETY OF



POTTERS

**NEW ZEALAND
SOCIETY OF POTTERS**

**36th NATIONAL
EXHIBITION
1995**

12 May - 11 June 1995

**Manawatu Art Gallery
Palmerston North**



BRONWYNNE CORNISH 23

It is with great pleasure that I welcome you to the 36th National Exhibition of the New Zealand Society of Potters.

A look around at the work in the exhibition will provide a glimpse of many techniques, many different ways of using the same materials, and many different references.

This is very different from the early exhibitions, where the call was to move from the obvious oriental influence toward something more true to our place in the Pacific. Today I suspect the influences are more widely international, because of regular visits to and from overseas potters or ceramicists, and easy accessibility to videos and periodicals.

There is no crystal ball to show what an exhibition in another 36 years will contain. Yet in the same way as this exhibition has progressed from the first in the 1950's, each successive year will bring us to the point where we find we are - or some will be - exhibiting in the decade of the 2030's.

Jennie Russell
President, New Zealand Society of Potters

ELIZABETH BOYD, Thames

- 7 Lovers (Porcelain, handcarved polished and glazed underside) \$500
- 8 Simply salt (Porcelain, handcarved nude, raw salt fired) \$350

STEPHEN BRADBOURNE, Auckland

- 9 Green jug (Stoneware, thrown and altered, with additions) \$150

K.G. BRADFORD, Auckland

- 10 Intimacy (Stoneware, fumed and shell-fired) \$70
- 11 A Thought (Stoneware, fumed and shell-fired) \$90

DIANNE BRADY, Palmerston North

- 12 Platter (High fired stoneware, wheel thrown and handpainted) \$185



MOYRA ELLIOTT 29

JUDI BRENNAN, Taupo

- 13 Tripot 1 \$250
- 14 Tripot 2 \$250

SHEILA BROWN, Wellington

- 15 Pasifica Series XV (Terracotta, sgraffito, slip decorated) \$155
- 16 Pasifica Series XVII (Terracotta, sgraffito, slip decorated) \$110

LINDA BRUCE, Hastings

- 17 Platter (Slip oxides and glazes with bark and metal) \$130
- 18 Heart Arrows (Slip, oxides and glazes with copper) \$90

PETER COLLIS, Auckland

- 19 Orb (Gold, silver leaf, with red enamel) \$260
- 20 Orb (Gold, silver leaf, with red enamel) \$120
- 21 Orb (Gold, silver leaf, with red enamel) \$42

SALLY CONNOLLY, Christchurch

- 22 Black and white figure (Raku) \$120



DENISE TOHIARIKI 106

BRONWYNNE CORNISH, Auckland

23 3 Favourite forms of teapot (White earthenware with slips) \$1200

ARNOLD DAVEY, Ashhurst

24 Raku bottle (Copper matt) \$95

25 Raku bottle (Copper matt) \$70

ROD DAVIES, Kaitaia

26 Deco bottle (Wood fired terracotta) \$180

MARGARET EDWARDS, New Plymouth

27 "Blooper" (Stoneware, crystalline glaze) \$95

MOYRA ELLIOTT, Auckland

28 Plant/Transplant XV (Multiple fired work from "Garden of Earthly Delights" series) (Clay/Bronze) \$1250

29 Plant/Transplant VII (Multiple fired work from "Garden of Earthly Delights" series) (Clay/Bronze) \$1250

30 Cast (Multiple fired work from "Garden of Earthly Delights" series) \$200

PENNY ERICSON, Waiheke Island

31 Taupo Headlands day (Multi-fired stoneware)

& night (\$170 each) \$340

32 Scuttled Hull (Multi-fired stoneware) \$350

33 Scuttled Steamer (Multi-fired stoneware) \$200

KAREN FAIRWEATHER, Otane

34 Autumn Ginger Stone (Terracotta, multi-fired slip glazes) \$55

35 Ginger Lune Stone (Terracotta, multi-fired slip glazes) \$45

36 Ginger Stone (Terracotta, multi-fired slip glazes) \$50

BRIAN GARTSIDE, Drury

37 Kereru over blue I (Stoneware, art plate wallpiece) \$350

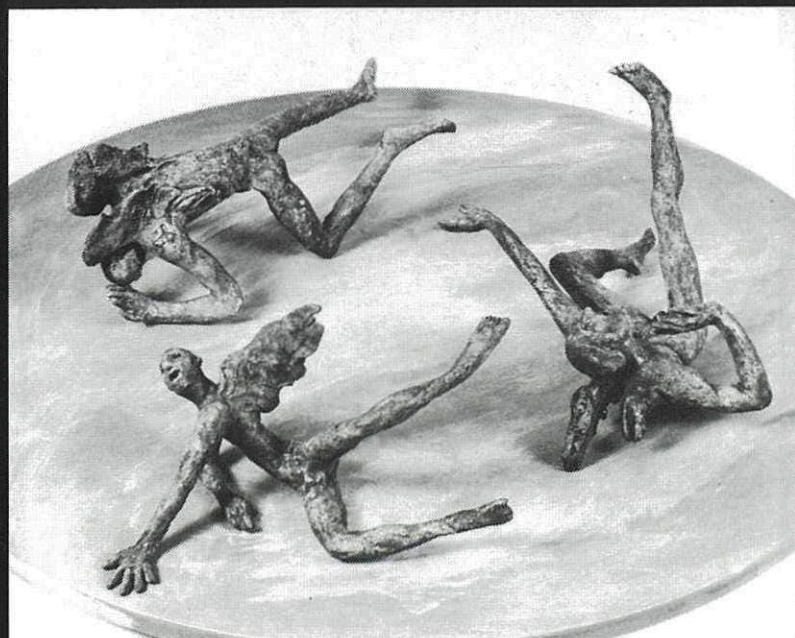
38 Kereru over blue II (Stoneware, art plate wallpiece) \$350

39 Clouds over blue (Stoneware, art plate wallpiece) \$350

JOHNATHAN GRIBBLE, Wanganui

40 Platter with fruit scene (Art work Lysha Sigley) \$45

41 Teaset with fruit scene (Art work Lysha Sigley) \$250

**CHRIS WEAVER** 114 & 115**ANN VERDCOURT** 113

PAUL HANSEN, Feilding

- 42 Vessel (Stoneware, wood-fired, saltglazed) \$280
- 43 Platter (Earthenware, slab form, iron and cobalt glazing) \$1200

LYNDA HARRIS, Hamilton

- 44 Bowl form "Nikau" (Slab built, raku fired) \$450
- 45 Jug form "Nikau" (Slab built, raku fired) \$330
- 46 Bowl form "Nikau" (Slab built, raku fired) \$145

PETER HENDERSON, Dunedin

- 47 Bowl, "Outstretched" (Abbot's white commercial stains and oxides) \$245

DAVID HUFFMAN, Maungakaramea

- 48 Vase (Stoneware) \$95
- 49 Winter Storm (Stoneware) \$125

HELEN HUGHES, Tauranga

- 50 Born of Pukunui (Coil formed, wood fired) \$350

MARGARET HUNT, Upper Hutt

- 51 Branch Vase (Salt fired) \$80
- 52 Branch Vase (Salt fired) \$70

SAM IRELAND, Auckland

- 53 Untitled (Gas fired stoneware) \$190

MARK JAMES, Canvastown

- 54 Thrower's Focus (Thrown and modelled) \$160
- 55 Rock Cod Pool (Thrown and modelled wall-hanging over pool fountain) \$130

NICKY JOLLY, Auckland

- 56 Bottle (Salt glazed) \$75
- 57 Silver bottle (Raku fired) \$75
- 58 Pot of the Pacific (Earthenware) \$68

EVELYN KELLY, Wanganui

- 59 Ring box (Porcelain, crystalline glaze) \$90
- 60 Ring box (Porcelain, crystalline glaze) \$90



SAM IRELAND 53



BRIAN GARTSIDE 39

JOHN LAWRENCE, Dannevirke
61 3 Mummies (Stoneware) \$450

PAUL LAIRD, Richmond
62 Angular Bronze Form (Stoneware slab built) \$400

SUZANNE McALLEN, Te Horo
63 Bowl (Altered form) \$38

ROYCE McGLASHEN MBE, Nelson
64 Tea's Up (White stoneware, slab built) \$350

MITSUKO McQUEEN, Dunedin
65 Saggar fired pot (Clay, seawood, glaze) \$150

HELEN MASON, Coromandel
66 Cosmos one (Stoneware) \$95
67 Cosmos two (Stoneware) \$95

PATTI MEADS, Wellington
68 Discoid bottle (Gold and platinum lustres, sawdust smoked) \$450
69 Flaming lustres bowl (Gold and platinum lustres, sawdust smoked) \$350

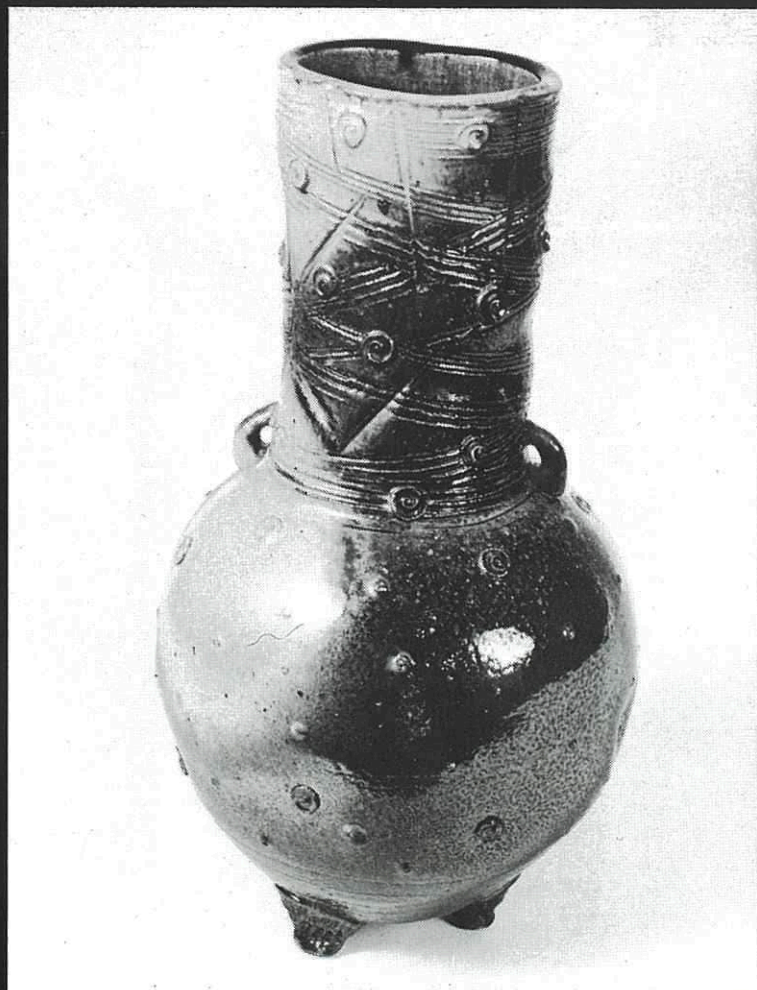
SUE MONK, Palmerston North
70 Dressed for Tea II (Low fired stoneware, multi-fired) \$65

GAELEEN MORLEY, Taradale
71 Bowl form (Volcanic series) \$425

GEORGE NEWTON-BROAD, Palmerston North
72 Form (Black and grey Raku) \$220
73 Form (Black and grey Raku) \$260
74 Form (Black and grey Raku) \$132



GEORGE NEWTON-BROAD 74



PAUL HANSEN 42

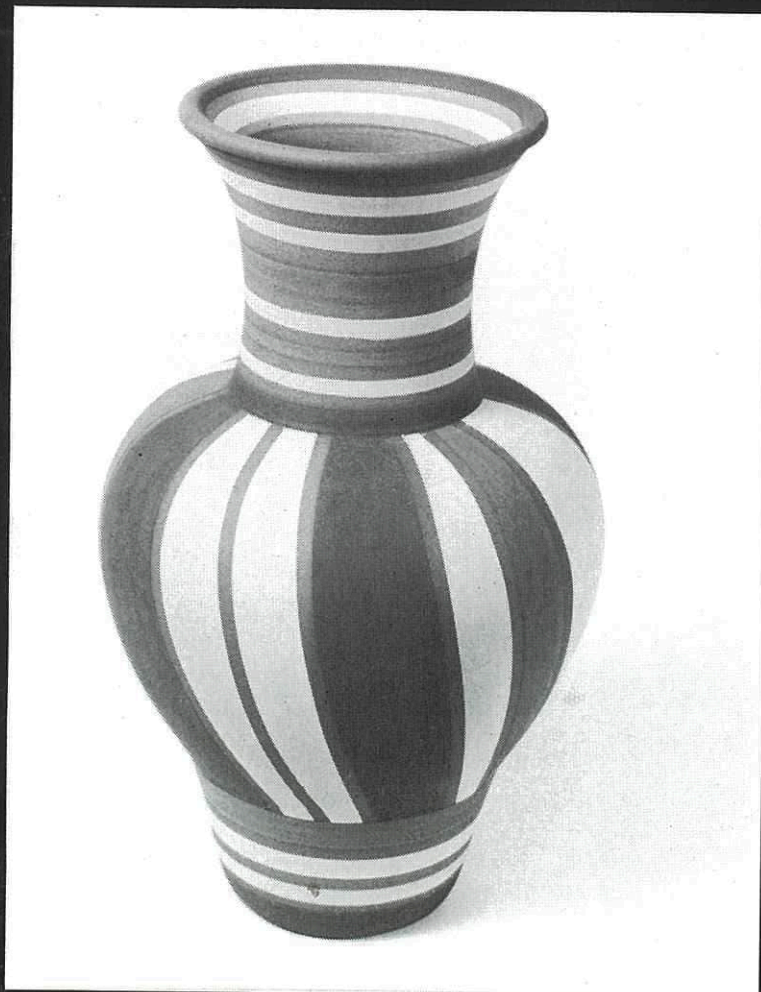
ROSEMARY O'HARA, Wellington
 75 Casserole (Earthenware) \$95

JIM PALMER, Auckland
 76 Whale Flute Vase (Press moulded stoneware) \$267
 77 Spiral Pot (Press moulded stoneware) \$465

RICHARD PARKER, Kaeo
 78 Vase (Terracotta, blue spotted) \$480

BELINDA PATON, Auckland
 79 Blue Vase (Handbuilt, copper and feather) \$120
 80 Tiddly Teapot (Handbuilt, lustre, copper and wood) \$150

ROBIN PAUL, Auckland
 81 Treasures I (Porcelain pedestal bowls) \$30
 82 Treasures III (Porcelain pedestal bowls) \$28



SUE SPANNAGL 99

ANNE POWELL, Hunterville
 83 Spirit Gate Vessel (Porcelain with soluble salts, waxed thread and silver paint) \$90
 84 Spirit Gate Vessel (Porcelain with soluble salts) \$90

ANNE PULLAR, Christchurch
 85 Hollow Inspiration (Underglazed vase stoneware) \$180

DARRYL ROBERTSON, Upper Moutere
 86 Turn and Unite (Ceramic and marble sculpture) \$1500

RICK RUDD, Wanganui
 87 Vessel (Multi-fired ceramic) \$2250
 88 Vessel (Multi-fired ceramic) \$1200
 89 Vessel (Multi-fired ceramic) \$950

JAN RUSSELL, New Plymouth
 90 Teapot (Raku) \$45
 91 Teapot (Raku) \$55
 92 Teapot (Raku) \$65



ANNE POWELL 83

KARI SHADWELL, Wellington

93 Recess I	(Earthenware fired once to 1100°C)	\$65
Recess II	(Earthenware fired once to 1100°C)	\$65
Recess III	(Earthenware fired once to 1100°C)	\$65
		(or 3 for \$160)

MIREK SMISEK O.B.E., Te Horo

94 Salt Glazed Bowl		\$1800
95 Salt Glazed Vase, "Tararua"		\$250

JANET SMITH, Cambridge

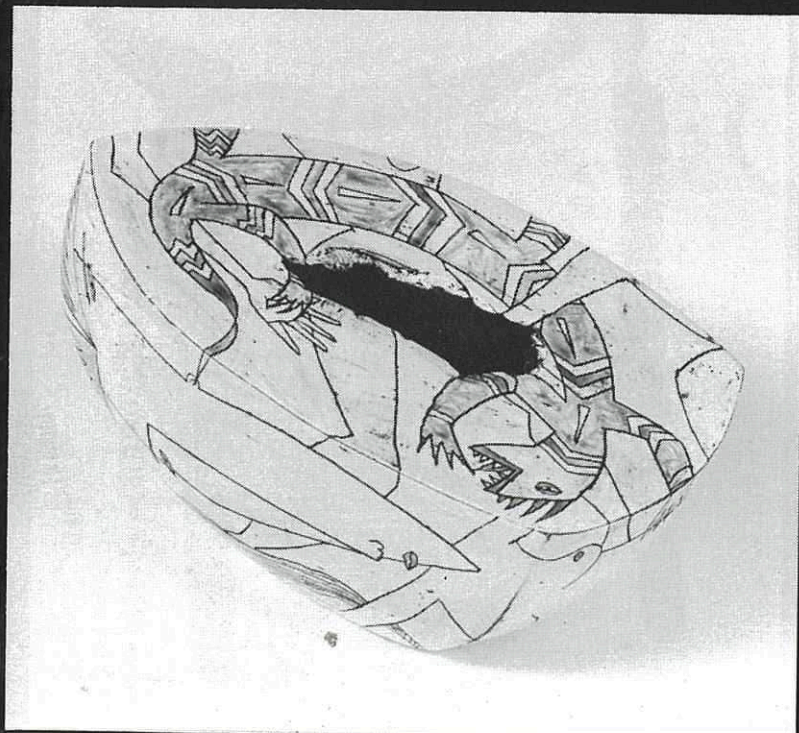
96 Are You Being Served	(Salt fired casserole)	\$145
-------------------------	------------------------	-------

MARGERY SMITH, Wellington

97 Blossom Jar	(Copper red, fired in gas kiln to 1280°C)	\$294
----------------	-------------------------------------------	-------

SUE SPANNAGL, New Plymouth

98 Goblin forest wide rimmed bowl	(Slip decorated non-functional)	\$90
99 Striped vase	(Slip decorated functional)	\$135
100 Safari vase	(Slip decorated functional)	\$145



TONY BOND 6

GRAEME STORM, Auckland

101 Pot	(Stoneware incised, iron manganese slip)	\$175
102 Pot	(Stoneware slab built, incised slip decoration)	\$120
103 Pot	(Stoneware thrown & faceted, copper barium glaze)	\$100

AIRINI TAYLOR, Dunedin

104 Decorated Bowl	(High fired stoneware)	\$120
105 Decorated Bowl	(High fired stoneware)	\$110

DENISE TOHIARIKI

106 Ipu o te Pūawaitanga - Ceremonial water vessel	(Saggar fired with seaweed then oxidized and embellished with paua shell, feathers and muka fibre)	\$340
107 Ipu Taonga Tuku Iho - Ceremonial water vessel	(Saggar fired with seaweed then oxidized and embellished with paua shell, feathers and muka fibre)	\$340
108 Ipu Rangatiratanga - Ceremonial water vessel	(Saggar fired with seaweed then oxidized and embellished with paua shell, feathers and muka fibre)	\$340



NGAERE ADAMS 2

MELIS VAN DER SLUIS, Hamilton

109 Earth strata No. I (Stoneware, slab built with engobes & oxides) \$240

ARIE VAN DYK, Silverstream

110 Platter (Stoneware) \$70

ANN VERDCOURT, Dannevirke

111 Trio (Paper clay, terracotta with white slip unglazed) \$850

112 Five figures (Paper clay stoneware with rutile & iron slips, wood base) \$900

113 Several attempts at Icarus (Paper clay stoneware figures on painted wood base) \$850

CHRIS WEAVER, Hokitika

114 Tall vessel (Clay and wood) \$400

115 Tall vessel (Clay and wood) \$400

PAUL WINSPEAR, Wellington

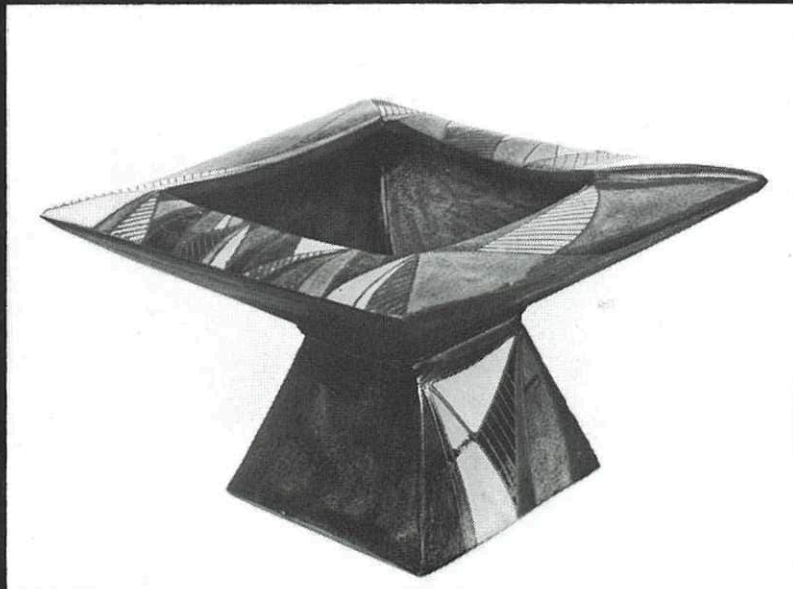
116 Bowl (Stoneware) \$60

117 Bowl (Stoneware) \$95

118 Bowl (Stoneware) \$150

BARRY & DIANE WOODS, Golden Bay

119 Blue Vessel (Stoneware) \$295

NOTES

ACKNOWLEDGMENTS

The exhibition and convention of the New Zealand Society of Potters has been supported by the following:

Arts Council of New Zealand Toi Aotearoa
Ezibuy, Palmerston North
Manawatu Standard, Palmerston North
Stylex Print, Palmerston North
Toyota Manawatu
Christina Davey
Feilding Arts Club
Square Edge Creative Centre
Palmerston North Community Council
Coastal Ceramics, Paraparaumu
Waikato Ceramics, Hamilton
C.C.G. Industries, Auckland
Mac's Mud, Nelson
Aorangi Auto Services, Feilding
Sun Alliance

Corporate members of the New Zealand Society of Potters:

South Street Gallery, Nelson
Bank of New Zealand, Head Office, Wellington
C.C.G. Industries, Auckland
Comalco, N.Z. Ltd
Electricity Corporation of New Zealand, Wellington
National Provident Fund, Wellington
Southern Clays Ltd, Dunedin
Western Potters Supplies, Auckland

Director & Staff of Manawatu Art Gallery

Convention Committee 1995
Ian Phillips - Chairman
Diana Frater - Secretary
Wynton Bell - Treasurer
Arnold Davey
Denise Tohiariki
John Hackshaw
Sue Monk
Pauline Phillips
Anne Powell - N.Z.P.S. Delegate

CREDITS

Sue Peck, Palmerston North Information Centre
Howard Williams - Photography

Note To Purchasers

Purchased pots should be collected from the Manawatu Art Gallery between Monday, 12 June and Friday, 16 June 1995, between the hours of 11am and 4.30pm unless alternative arrangements have been made at the time of purchase.

Receipts are required to be shown by the person collecting pots.