

New Zealand Society of Potters 41st Annual Exhibition  
Reyburn House, Whangarei 25 September - 25 October 1999



A definition by Emmanuel Cooper of Studio Pottery is as follows -

“Ceramic objects made largely by hand, by individuals, or small groups of “makers”, working together in a team; one of the major characteristics of studio pottery is a primary concern for the inherent quality of the material and a sound understanding of the techniques and processes required to enable creative ideas to be expressed. Studio Potters enjoy enormous artistic and technical freedom.”

In New Zealand we have expressed this for nearly one hundred years and whilst that is a finite speck of time in world/clay terms, it is significant for us.

This is the New Zealand Society of Potters holding its forty-first annual exhibition - forty-one growth rings, and within that, the heart of the matter, our language in clay, multi-lateral in its survival, holding us together. Within a hugely bureaucratic and structured society, we still energise an intuitive desire, an adventurous spirit, a story-telling sense of aliveness around the fire and in it, a sense of belonging to the past and to its future.

As potters, our thumb prints are our integrity and validity and this exhibition is a visualisation of ourselves -

“This is me.” - “This is what I do.” - “This is what I believe in.”

Strong statements and no consultants needed!

Welcome to Whangarei. Welcome to our stories.

I hope you'll read them well, take them home and retell them, and above all, feel empowered to tell your own in clay.

September 1999  
Anneke Borren  
President NZSP



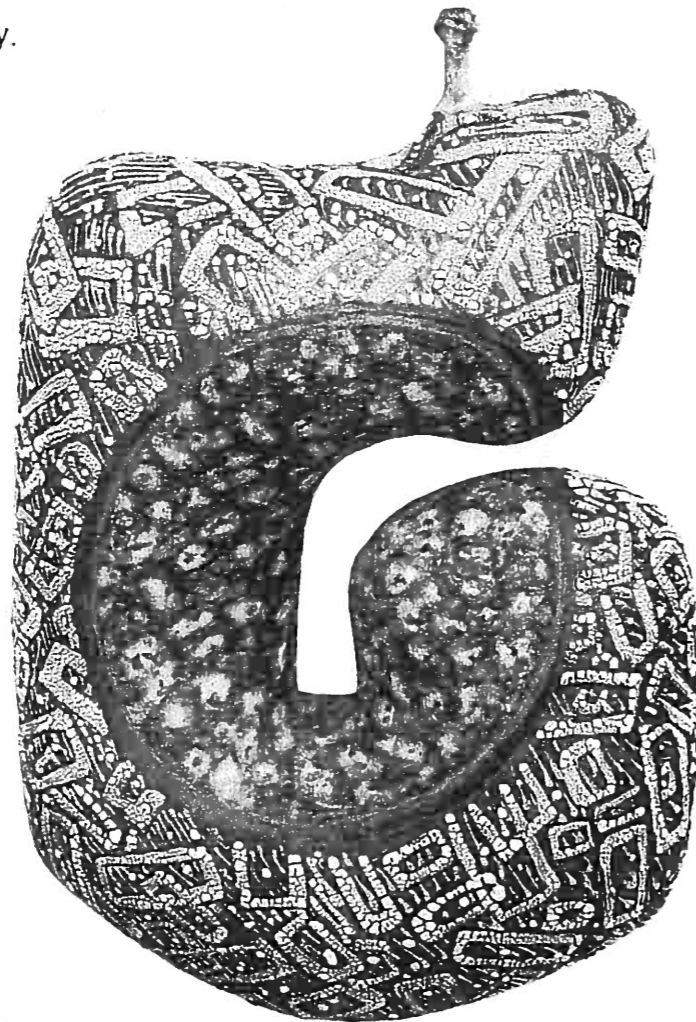
## SELECTORS COMMENTS

### ARTIST'S STATEMENT

Throughout my artistic career, I have drawn inspiration and ideas from my surroundings and experiences. My works have reflected the organic aspects of nature, the everchanging weather and the art of dancing.

Form and surface are woven together, creating an endless line of movement. This carries the eye of the viewer, and continually provokes curiosity. In the past years, the main body of my work has been hand-built, though I continue to wheel-throw and incorporate wheel-thrown elements in my forms. Handbuilding gives a sense of freedom and possibility. The asymmetrical aspect brings with it the eternal challenge: balance, harmony, beauty.

YOSHIRO IKEDA



I love my family especially grandchildren. I love working with clay especially porcelain. I love flower arranging especially Ikebana. I love gardening especially in the rain.

Barry and I moved to Mangawhai a year ago where with family we are in the process of building a Cafe, Bar and Gallery to be known as the Smashed Pipi.

Born 1937 - Potting a long time - Exhibited mainly in group shows in New Zealand. We have been to Japan many times exhibiting there once. I am a member of Albany Potters Shop.

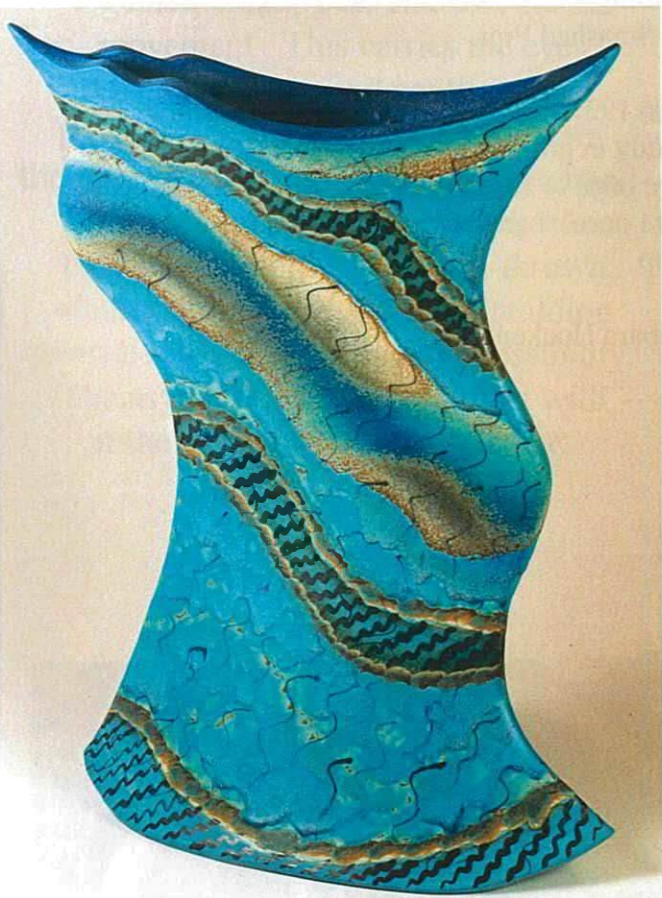
Barbara Hockenull

May we continue to live in a society that values and supports individual creative expression.

Peter Alger







Tai Tokerau Clay  
 HANGAREI  
 The Creative Journey



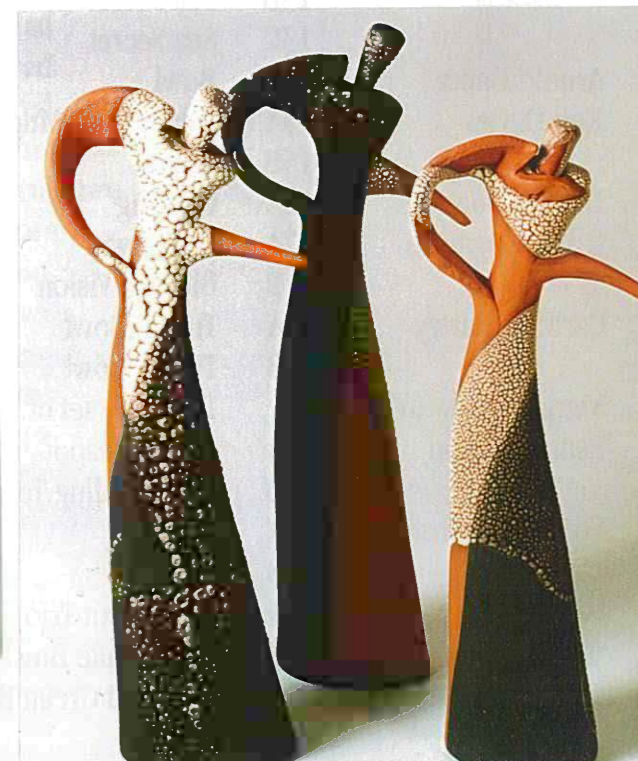
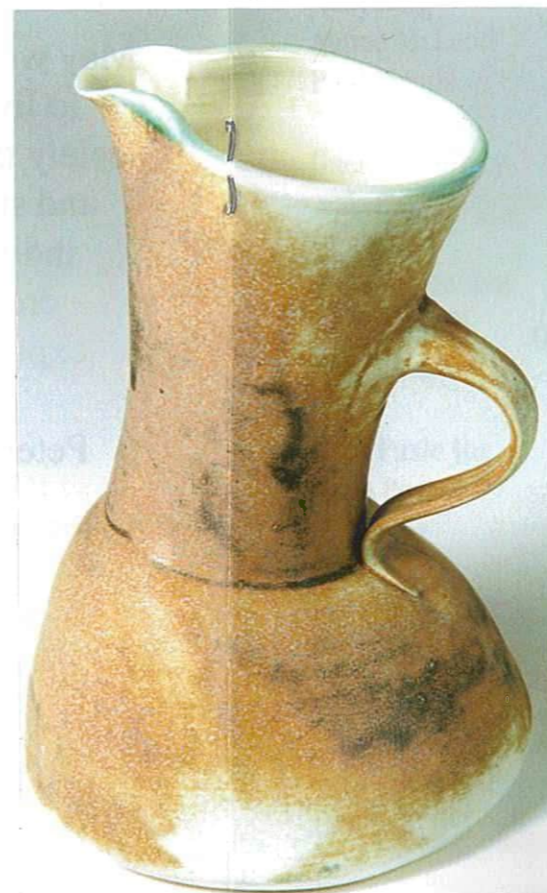
Photos:  
 Howard Williams



13C 57 6A 32B

37 48B 20B

15B 61C 30A 36





*NZSP Exhibition, Reyburn House, Whangarei, September 1999*

Potter	# No	Title	Medium	Price (\$)
Brendan Adams	1A	Flat Teapot	Earthenware/Aluminium	250
	1B	Car Catacomb	Earthenware	280
Ngaere Adams	2	Blue Delight	White Stoneware	95
Graham Ambrose	3A	Purple Slab Pot	Stoneware	210
	3B	Leopard Spot Orb	Stoneware	90
George Andrews	4A	Re-assembled	Stoneware	130
	4B	Insert II	Clay, Bronze Insert	110
Mark Ayson	5A	Blade	Raku	273
	5B	Blade	Raku	235
Greg Barron	5C	Mine Box	Raku	97
	6A	Altered Teapot	Porcelain	101
Kumiko Black	6B	Lidded Jar	Saltglazed Stoneware	1,200
	7A	Blue Teapot	Saltglazed Stoneware	70
Keith Blight	7B	Okago Vase	Saltglazed Stoneware	85
	8A	Big Red	Terracotta Sculpture	525
Lu Bo	8B	Moribana-Ikebana	Terracotta Vessel	200
	9A	Legendary Luminous Pearl	Sculpture	380
Anneke Borren	9B	Spring Breeze	Terracotta Sculpture	360
	10A	Lidded Pot	Brush Decorated Stoneware	450
Kelvin Bradford	10B	Lidded Pot	Brush Decorated Stoneware	450
	11A	Mentori I	Shell fumed Stoneware	260
Sheila Brown	11B	Mentori II	Shell fumed Stoneware	480
	11C	Mentori III	Shell fumed Stoneware	145
Len Castle	12A	Treasure Box I	Burnished Terracotta	52
	12B	Treasure Box II	Burnished Temacotta	52
Arnold Davey	13A	Sea Secret	Earthenware	350
	13B	Sea Secret	Earthenware	350
Rod Davies	13C	Sea Secret	Earthenware	660
	14	Bowl	Smoked Lustre	90
Dianna Doney	15A	Salt Set of 6 Mugs	Saltglazed Stoneware	180
	15B	Teapot	Saltglazed Stoneware	128
E Ann Dugmore	16	Offering	Clay	3,000
	17A	Meltdown	Raku Sculpture	130
Caroline Earley	17B	Blurred Vision	Raku Sculpture	80
	18A	Tripod Bowl	Ceramic	200
Margaret Edwards	18B	Tripod Bowl	Ceramic	200
	19	Triptych (set of 3)	Crystalline Glaze	200
Penny Ericson	20A	Sailing Teapot	White Stoneware	250
	20B	Three Sailing Teapots	White Stoneware	150
Frederika Ernsten	21A	Bowl	Stoneware	250
	21B	Bowl	Stoneware	45
Ian Firth	22A	Shell Form Trio	Stoneware	1,485
	22B	Crater Lake Bowl	Stoneware/Perlite	675
Ian (Jock) Fleming	23	Highland Green Bowl	Stoneware	25

*NZSP Exhibition, Reyburn House, Whangarei, September 1999*

Potter	# No	Title	Medium	Price (\$)
Sue Forward	24	Abigail	Terracotta/Stoneware Birdbath	980
Jonna Gibson	25	Never judge a Dwelling by its Facade	Slipcast Paperclay Lowfire Enamels	1,150
Maria Heath	26A	The Skateboarders (set of 2)	White Clay	850
	26B	Genetically Modified Fruit	Terracotta	165
Neil Hey	27A	Images Platter	Stoneware	105
	27B	Images Bowl	Stoneware	78
David Huffman	27C	Images (set of 2)	Stoneware	62
	28A	Bowl	Porcelain	250
Aylex Ivceovich	28B	Lapis Surge	Stoneware	150
	29	Alive in the '90s	Saltglazed Stoneware	85
Jin Ling Zhang	30A	King and Queen	Terracotta	560
	30B	Dove	Terracotta/Stoneware	395
Trish Kane	31A	Celtic Vessel I	Raku	140
	31B	Celtic Vessel II	Raku	120
Hilary Kerrod	31C	Celtic Vessel III	Raku	140
	32A	Conference Woman	Vapour Glazed Earthenware	375
Kelly King	32B	Archaic Teapot	Vapour Glazed Earthenware	180
	32C	A Curse to her Husband	Vapour Glazed Earthenware	180
Aimee McLeod	33	Te Korero Tuatahi	Clay	750
Patti Meads	34	Platter	Stoneware	165
Gaeleen Morley	35A	Centripetal Form	Burnished Lustre	450
	35B	Round Box	Burnished Lustre	140
Margaret Mouat	36A	Return to the Source I	Multifired	195
	36B	Return to the Source II	Multifired	195
Kathy O'Neill	36C	Return to the Source III	Multifired	195
	37	Dancing across the Landscape	Stoneware	550
Jim Palmer	38	Versace's Wish	Raku Sculpture	225
John Paxie Jnr	39A	Spiral Vessel	Stoneware	386
	39B	Kina Vessel	Porcelain	300
Anne Powell	40	Sunrise 2000	Stoneware	660
	41A	Pacific Vessel I	Porcelain	95
Fay Purves	41B	Pacific Vessel II	Porcelain	95
	41C	Pacific Vessel III	Porcelain	95
Bev Rea	42	Shades of Green	White Stoneware	78
Judith Rivers	43A	Coastal Bowl	Saltglazed Stoneware	92
	43B	Blossom Jar	Saltglazed Stoneware	90
Darryl Robertson	44A	Family Life Bowl	Mid-fire Ceramic	15
	44B	Family Life Bowl	Mid-fire Ceramic	15
	45	Mooroka Tabernacle	Saltglazed Stoneware	850



*NZSP Exhibition, Reyburn House, Whangarei, September 1999*



Creative Communities NZ  
Western Potters Supplies Ltd  
Westley Insurance Ltd  
Juken Nissho Ltd

**Committee**

Margaret Mouat  
Jeanette King  
Greg Barron  
Berris Spicer  
Sue Forward  
Dave Huffman  
Moata McNamara

**THANKS TO**

Burning Issues Gallery  
Fletcher Steel  
Northland Craft Trust  
Northland Polytechnic Staff and Students  
Northland Wines  
Pak'n Save  
Salvation Army Training and Employment Programme  
The Spice Cuisine Team  
Wellington Potters Association  
Whangarei Galleries and Museums with supporting exhibitions  
Whangarei Girls High School  
Mark Brockie  
Elizabeth Fuge  
Janet Potham  
Toby Stafford  
Howard Williams

*To everyone who has given so generously of their time to bring together a memorable convention - thank you.*

*To everyone who participated - thank you.*

Potter	# No	Title	Medium	Price (\$)
Rick Rudd	46A	Bowl	Earthenware	525
	46B	Bottle	Earthenware	425
	46C	Bottle	Earthenware	325
Jan Russell	47A	Boat	Raku	65
	47B	Boat	Raku	75
Margaret Ryley	48A	Sea and Sand	Stoneware	180
	48B	Sea and Sand	Stoneware	250
Duncan Shearer	49A	Single Cylinder	Sodaglazd Stoneware	150
	49B	Set of 4 Cylinders	Soda/Celadon Stoneware	225
Robin Sinclair	50	NZ Ventifact Form	Earthenware	140
Janet Smith	51A	Salties Teapot	Saltglazed Stoneware	140
	51B	Tea for Two	Saltglazed Stoneware	85
Margery Smith	52A	Bowl	Lustred Porcelain	75
	52B	Bowl	Lustred Porcelain	65
	52C	Bowl	Lustred Porcelain	60
Katherine Smyth	53A	Vase	Stoneware	200
	53B	Vase	Stoneware	200
	53C	Vase	Stoneware	200
Toby Stafford	54A	Platter	Earthenware	410
	54B	Urn	Earthenware	520
	54C	Squared Vase	Earthenware	280
Peter Stichbury	55A	Screwtop Teapot	Stoneware	175
	55B	Screwtop Teapot	Stoneware	175
	55C	Screwtop Teapot	Stoneware	175
Margaret Sumich	56A	Fruit Bowl '99	Woodfired Raku	170
	56B	Teapot Form	Woodfired Raku	90
	56C	Teapot Form	Woodfired Raku	90
Ann Verdcourt	57	Hairy	Stoneware	475
Chris Weaver	58	Teaset (set of 3)	Clay	250
Paul Winspear	59A	Dish	Stoneware	220
	59B	Dish	Stoneware	160
	59C	Set of 2 Dishes	Stoneware	170
	60	A Balance of Payments	Terracotta	140
David Wolland	61A	Oval Serving Dish	Stoneware	120
Judy Wood	61B	Oval Serving Dish	Stoneware	75
	61C	Jug	Stoneware	75
	62A	Ocean Currents I	Stoneware	185
Joyce Young	62B	Ocean Currents II	Stoneware	75

**EXHIBITION SELECTORS**

Barbara Hockenhill	63	Set of 6 Neriage Dishes		85
Peter Alger	64	Woodfired Stoneware Box		N.E.S.



