

fusion

New Zealand Society of Potters

45th National Exhibition

9 April - 30 April 2004

fusion

Percy Thomson Gallery

Prospero Place, Miranda St

Stratford, Taranaki

p: 06 765 0917

f: 06 765 7500

e: info@percythomsongallery.org.nz

Catalogue design: Jessica Gommers

Photography: Sue Maxwell

From the President

It is my pleasure to welcome you to Fusion, the 45th National Exhibition of the New Zealand Society of Potters. And while as a Society we are pleased to hold our 2004 National Convention in New Plymouth, it is a real pleasure to take our work to Stratford and exhibit at the Percy Thomson Gallery.

The National Exhibition is held each year and is the highlight of the Society's programme. The venue for the exhibition is established in conjunction with the annual convention and is rotated between the north and south islands. The Executive of the Society was delighted when the potters of Taranaki volunteered to organise the Convention and Exhibition. The Exhibition, as our showpiece, is a wonderful opportunity for our members and the public to see and discuss what is happening in the New Zealand clay world.

Ceramics is a diverse field, ranging from the humble domestic pot to expansive sculptural forms, incorporating an immense range of techniques and finishes limited only by the imagination and skill of the artist. Like all artists, we draw inspiration from the world around us and from the work of like minded colleagues. The originality within each human mind is exemplified in the range of work before you at this exhibition.

Just like the ceramic objects that exist from Babylonian and earlier times, the work before you at this exhibition will outlast us all by thousands of years with but just a little care. We will be so pleased if you choose to be a custodian of a piece for your lifetime.

Ceramics is such a tactile art form. Look, touch and enjoy the work in our exhibition. And please visit our web site, nzpotters.com, where you may refresh your memories of the work in this exhibition.

On behalf of all our exhibitors I wish to thank our Taranaki friends for making this exhibition possible, and also to thank you the visitor for sharing with us our passion for clay.

Neil Hey

President

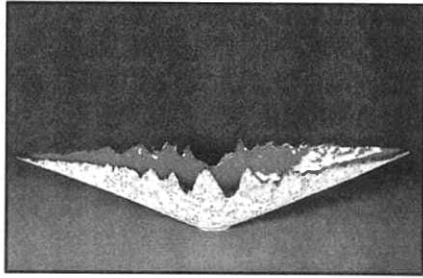
New Zealand Society of Potters

Judges biography Len Castle

Len Castle has been passionate about clay since his introduction to it in 1947 and has become a legendary figure in the pottery and arts community of New Zealand. In June 2003 he became one of a prestigious group of ten Icon Artists – an honour bestowed by the Arts Foundation of New Zealand. Len was also made a DCNZM (Distinguished Companion of the New Zealand Order of Merit) in this years New Years Honours, adding to his previous CBE in 1986 for services to pottery.

Len Castle learned to throw on the potter's wheel at Auckland Teachers' College and was a science teacher at Mt Albert Grammar School in Auckland when he began potting in earnest. He was the first potter to be awarded a scholarship from the Association of NZ Art Societies, travelling to St Ives to work with Bernard Leach in 1956-57. In 1963 Len gave up teaching to become a full-time potter. In 1966-7 he received a NZ Arts Council Fellowship to study in Japan and in 1974 visited potters in S. Korea and China. He was one of twelve NZ ceramicists invited to represent NZ at the World Expo in Seville, Spain. In 1991

With his scientific background, Len has always been curious about the natural world and interested in extending his knowledge and understanding of it. His work reflects a deep affection and respect for nature and the environment. His exploration of geomorphic and geothermal shapes, textures and colours and his remarkable ability to capture the spirit of the land have brought him and his art form to a previously unrealised and richly deserved international prominence. His career spans the emergence, flourishing and subsequent transformation of the craft movement of the 20th century, and his work epitomises its vitality and the sophistication of its craftsmanship and artistry.



Pre-Selection Comments

My first task as a selector is to state that my decisions do not exclude my subjectivity.

As I approach the selector's tables with their concentrated groupings of pots/objects, each piece or group will be taken and placed in its own space for examination.

I look forward to handling works that will extend my experience and challenge me. Most likely I will see objects that are highly individualised forms of expression and others that are, hopefully, strong works representing shared experiences to which one can relate. I also look forward to seeing work inviting quiet contemplation. Above all, I hope to experience works that arrest me by their quality of expression.

To summarise, the question is, has the maker successfully achieved a solution of his or her intended aims? I respond favourably to work that has a warmth of personal feelings, is of high quality design and aesthetic standards regardless of the style and techniques employed. I delight in viewing richly imaginative work, subtle in expression yet assured in character.

Len Castle

Comments on the Award Winners by Len Castle

Premier Award
Sponsored by
TSB Community Trust

John Roy, Tauranga

'Man with burden I'
'Man with burden II'

These engrossing creations are strong works. They present questions and shared experiences to which one can relate. You need to approach these sensitively modelled human forms, lifting them so that your eyes, feelings and mind engage with hauntingly troubled expressions of bowed faces of these homo sapiens.

The symbolism of the tower building, white clay slip and puckered encrustations suggest a time-span of concern, perhaps from the pre-Socratic period.

Merit Award
Sponsored by
Vision Insurance

Janet Green, Masterton

'Loutrophores'

It was delightful to be lead into new ceramic territory with this vessel. I am not certain, but perhaps it makes reference to 'Ode on a Grecian Urn' by John Keats.

It is an impressive work in all respects. Subtle in its expressiveness, impeccably crafted, aesthetically every part melds perfectly. There is a richness of quiet decoration. With a light coloured background it reveals a variety of piercings and the light revealed plays an important role in its statement.

Merit Award
Sponsored by
Taranaki Clay 2004

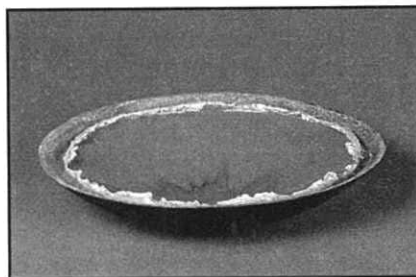
Boyd Taylor, Clive

'Wave Form'

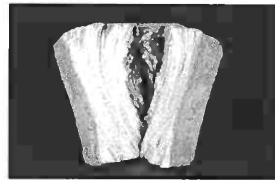
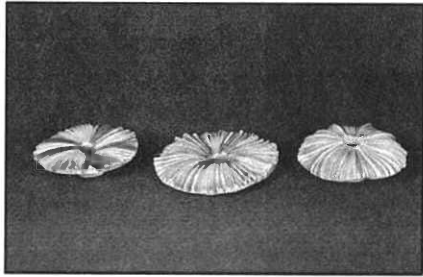
This form, with its appropriate scale for a variety of settings, invites the viewer to touch and feel its flowing movement.

It is an aesthetically satisfying form with a beautiful black glaze. It defines its presence clearly in a quiet and strong manner.

Catalogue of exhibited works



- | | | | |
|----|--------------------------------------------------------------------------------------------------------|----|----------------------------------------------------------------------------------------------------|
| 1. | Len Castle
Inverted Volcano
From the Volcanic and
Geothermal Series
Earthenware
\$1,500 | 3. | Len Castle
Bowl
From the Volcanic and
Geothermal Series
Earthenware
\$900 |
| 2. | Len Castle
Bowl
From the Volcanic and
Geothermal Series
Earthenware
\$1,250 | 4. | Len Castle
Bowl from the Volcanic and
Geothermal Series
Lana Lake
Earthenware
\$900 |
| | | 5. | Len Castle
Sea Secret
Earthenware
\$450 |



6. Len Castle
Sea Secret
Earthenware
\$450

7. Len Castle
Sea Secret
Earthenware
\$550

8. Len Castle
Fossil from the series
Memories of searching for
fossils in Gondwana
Earthenware
\$450

9. Len Castle
Fossil
\$450

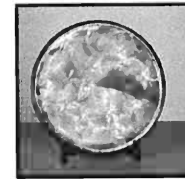
10. Len Castle
Fossil
\$450

11. Len Castle
Sea Secret
\$450

12. Len Castle
Sea Secret
\$450

13. Len Castle
Sea Secret
\$450

14. Len Castle
Earth Book
\$900



15. Ngaere Adams
Starbursts
\$240



16. Ngaere Adams
Butterflies (Set of 4)
\$210



17. Maureen Allison
Fault Line
\$190



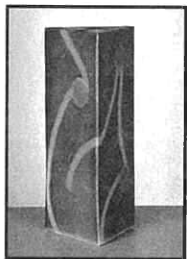
18. Pamella Annsouth
Descendance
\$300



19. Lindsay Baine
Terracotta with black slip
\$70



20. Clair Barton
Horizon
\$160



21. Keith Blight
Big Red 7
\$600



22. Keith Blight
Resistance & Movement
\$500



23. Adrienne Bolton
Watershed II
\$350



24. Anneke Borren
Pair of Lidded Forms
- Opposites
\$580

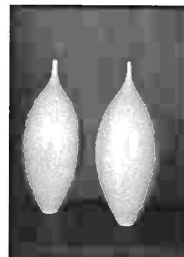
25. Anneke Borren
Floating Lidded
Black on Black Forms
\$320



26. Jenny Browne
Platter with Carved Slip
Decoration
\$250

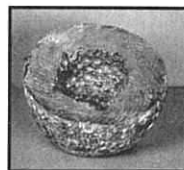


27. Shona Clarkson
Our Red Coats (Pair)
\$160



28. Peter Collis
Ovoid
\$450

29. Peter Collis
Ovoid
\$450



30. Arnold Davey
Geode Semblance I
\$80

31. Rod Davies
Aotearoa Installation
\$450



32. Margaret Edwards
Secrets from under the Sea
\$150

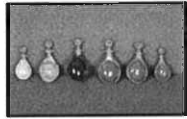




33. Penny Ericson
Four Days in a Volcanic Landscape
\$650



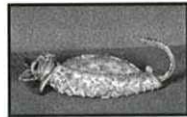
34. Frederika Ernten
Candle Holder
\$136



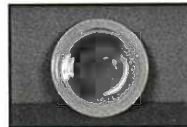
35. Kate Fitzharris
From the same beginnings - 6 spoons
\$310



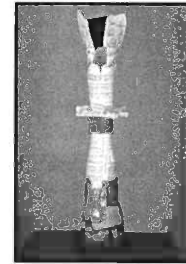
36. Mary Lou Foate
Tropical Garden
\$285



37. Kirsty Gardiner
Catatonic
\$500



38. Kathryn Gates
Stargazer - Platter
\$195



39. Katie Gold
A Sailing We Go
\$850



40. Janet Green
Loutrophoros
\$850



41. Lisbeth Hansen
Frejas Voyages
\$390

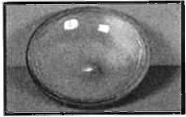


42. Lynda Harris
Ripples I
\$140

43. Lynda Harris
Ripples II
\$140



44. Maria Heath
The Skate Boarder
\$275



45. Neil Hey
Coloured Steel Bowl
\$165



46. David Huffman
Agateware Vase
\$95

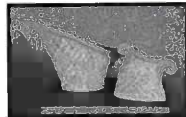


47. Young Chui Kang
Time for Tea
\$1,000



48. Royce McGlashen MBE
Mixed Messages 1
\$650

49. Royce McGlashen MBE
Mixed Messages 3
\$650



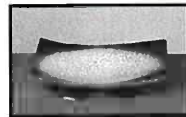
50. Aimee McLeod
Koru Vessel
\$320

51. Aimee McLeod
Koru Vessel
\$185



52. Patti Meads
Tree Bowl small
\$125

53. Patti Meads
Landscape Bowl
\$230



54. Danny Moorwood
Platter
\$300



55. Gaeleen Morley
Teapot Form
\$320

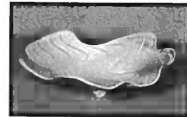
56. Gaeleen Morley
Teapot Form
\$320



57. Sue Newitt
Large Bowl
\$95



58. Shigemitsu Ohashi
Polka-dot Vase
\$500



59. Chiine Okada-Dewar
Blue Pacific Wave
\$160



60. John Paxie (Jnr)
Simplicitea
\$600



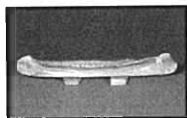
61. Anne Powell
Celtic Vessel
\$450

62. Anne Powell
Celtic Stone
\$160



63. Judy Ringland-Stewart
64. Aladdin Teapot Gold
\$165

Judy Ringland-Stewart
Aladdin Teapot Chestnut
\$165



65. Darryl Robertson
In My Canoe
NFS

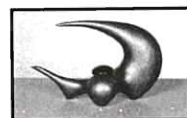


66. John Roy
67. Man with burden series
\$250

John Roy
Man with burden series
\$250



68. Alec Roy
Vessel
\$150



69. Rick Rudd
70. Teapot
\$575

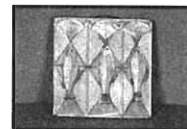
Rick Rudd
Teapot
\$525



71. Margaret Ryley
Waimakariri
\$350



72. Jennifer Shearer
Trout Grid
\$275



73. Jennifer Shearer
Trout Dinner
\$275



74. Duncan Shearer
Vase
\$100

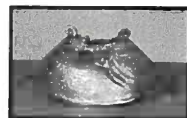
75. Duncan Shearer
Lidded Pot
\$150



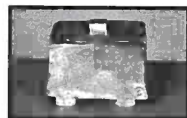
76. Barbara Skelton
Double Skinned Bowl
\$160



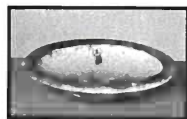
77. Mirek Smisek OBE
Delight
\$150



78. Janet Smith
Connections
\$300



79. Toby Stafford
Lidded Box
\$500



80. Toby Stafford
Bowl
\$450



81. Margaret Sumich
Ovoid Crucible
\$400



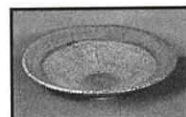
82. Boyd Taylor
Wave Bowl
\$520



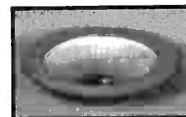
83. Rosemary Thompson
Pair of Seed Domes
\$260



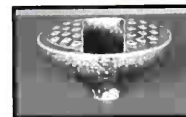
84. Ian Webster
Strata Series No.12
\$200



85. John Wineera
Sea Sand and Sky
\$850



86. Paul Winspear
Summer Dish
\$700



87. Helen Yau
Oracle Vessel
\$118



88. Helen Yau
Cloudscape (Set of 3)
\$280



89. Gloria Young
Rivendell Series II
\$625



90. Gloria Young
Rivendell Series III
\$475

Acknowledgements

Special thanks to the following for
their sponsorship of this exhibition:

Taranaki Community Trust

Vision Insurance

NP District Council Creative Communities

Creative Communities, Stratford

New Plymouth Potters

Taranaki Clay 2004 Convention

& Exhibition Committee:

Barbara Nicholls

Jan Russell

Trish Kane

Shirley Scottt

Kathy Gates

Marjan Harding

All exhibits are for sale. Please direct your enquiries to the office at the Percy Thompson Gallery. On presentation of your receipt, you may uplift your purchase on Sunday May 2nd between the hours of 1 - 3pm. Arrangements can be made for postage and packing.

