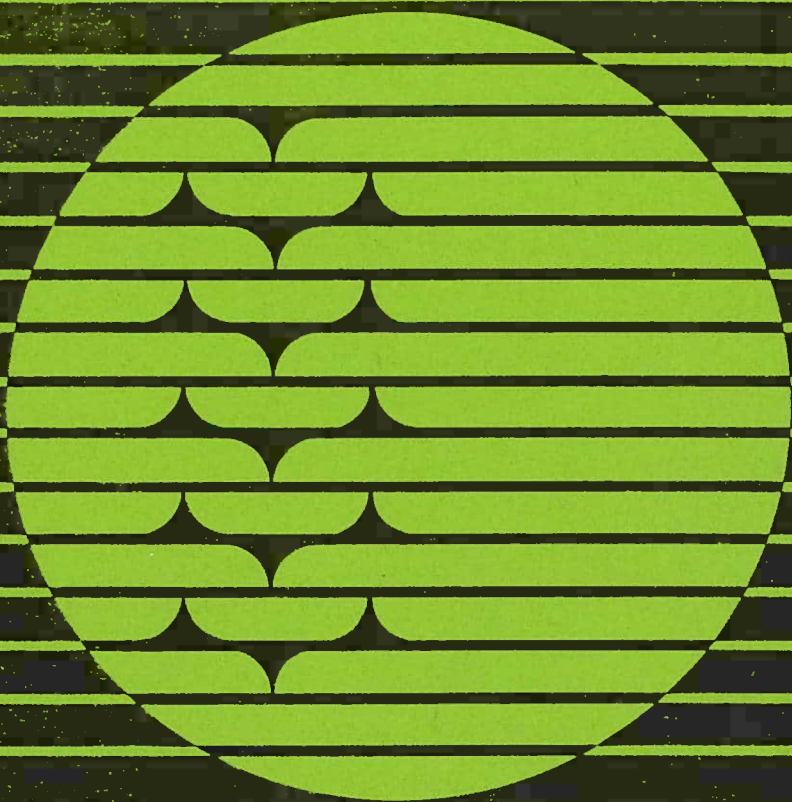


exhibition of selected work
from members of the new
zealand society of potters



spheres

southland museum and art gallery

8-23 november 1986

The Southland Members of the New Zealand Society of Potters are very pleased to be hosting the National Ceramic Exhibition of 'SPHERES'.

Pots have been selected from Society Members in each area, thus bringing together an interesting and colourful display.

We hope you enjoy viewing this exhibition which closes on 23 November.

RED SPOT denotes work has been sold

PAYMENT is requested at time of purchase

PURCHASES to be collected from the Museum on Monday, 24 November 1986

Art work for catalogue cover, invitations and posters by Sandy Phillips, Southland Community College.

AUCKLAND

ANN AMBLER:	
1. Low-fired Sphere	\$50
KEITH BLIGHT:	
2. Moribana Sphere	\$110
CHRIS COCKELL:	
3. Raku Form	\$375
JAN COCKELL:	
4. Set of Three Saggar Fired Porcelain Spheres	\$105
PENNY EVANS:	
5. Set of Three Raku Spheres	\$149
(a) \$55	
(b) \$50	
(c) \$44	
BRIAN GARTSIDE:	
6. Sphere	\$800
TUI MORSE:	
7. Ring Box	\$26
JOHN PARKER:	
8. Spherical Bottle	\$75
MATT STAFFORD:	
9. Sphere	\$40
CARROL SWAN:	
10. Set of Three Spheres with Platinum Decoration	\$165

JEANNIE van der PUTTEN:
11. Inlaid Porcelain Sphere \$65

SALLY VINSON:
12. Set of Three Spheres \$250

WAIKATO

LYNDA HARRIS:
13. Raku Sphere 'Daisies' \$65

SUE JUDD:
14. Raku Sphere \$85

SUE KNOWLES:
15. Abstract Sphere Porcelain \$90

YVETTE PHILLIPS:
16. Raku, Black and White Sphere \$80

ANN POWELL:
17. Kowhaiwhai Carved Spheres \$200
(a) Rust and Black - \$100
(b) White - \$100

SANDRA WEBB:
18. Lidded Sphere with Flax
Pull \$36

TARANAKI

MARGARET EDWARDS:
19. Sphere-Crystalline Glaze \$50

JAN RUSSELL:
20. Trio Egg Forms \$60

MARIA VIATOS:
21. 'Trio' Terra Sigillata
Sawdust Fired \$65

HAWKES BAY

INGELBORG JENSSEN:
22. Pitfired Spheres DAMAGED

JULIE MAIR:
23. 'Trio' Porcelain Onlaid
Stoneware Spheres \$303

ESTELLE MARTIN:
24. 'Stone Garden'. Anagama fired
for 8½ days \$120

GAELEEN MORLEY:
25. Three Spheres. Fumed Porcelain \$90

KEITH ROBINSON:
26. Lidded Sphere. Modified Shino
Glaze \$391

MANAWATU

RAEWYNE JOHNSON:

27. Cut Sphere. Terracotta, decorated
with slips and commercial stains \$175

EVELYN KELLY:

28. Midnight Blue Porcelain Sphere.
Zinc silicate crystalline glaze \$90

GEORGE NEWTON-BROAD:

29. Raku \$52

APRIL PEARSON:

30. 'Our Gyroscopic River Valleys'
Sgraffito. Stoneware \$130

RICK RUDD:

31. Figure in Sphere. Terracotta \$375

TREVOR WRIGHT:

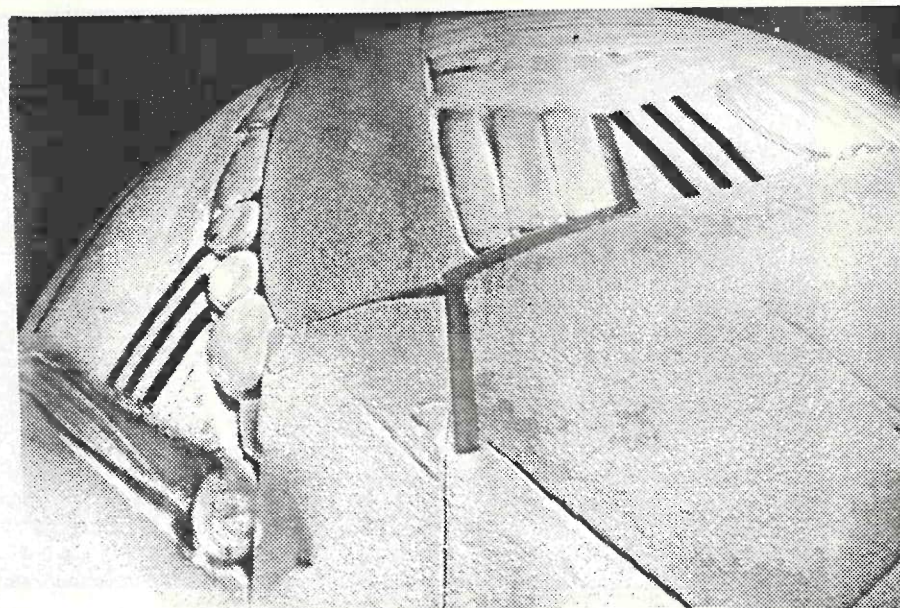
32. Engraved Slip with Overglaze
High Fired Stoneware \$44

WELLINGTON

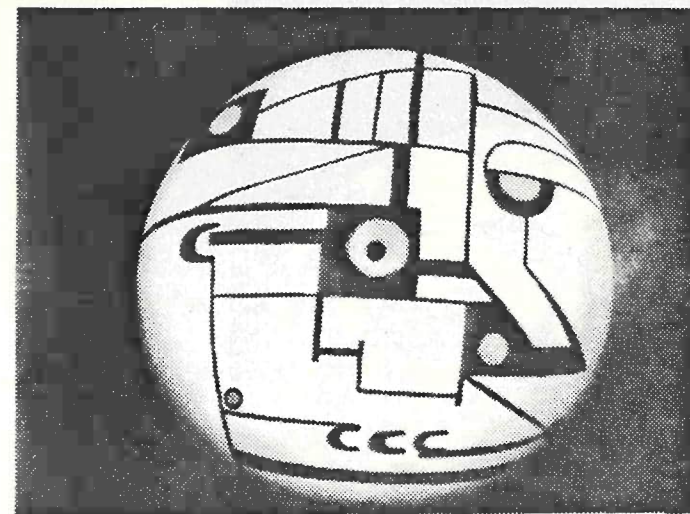
ANNEKE BORREN:

33. Pendant-pot. Stoneware
(Whalebone pendant by: Owen Mapp) \$285

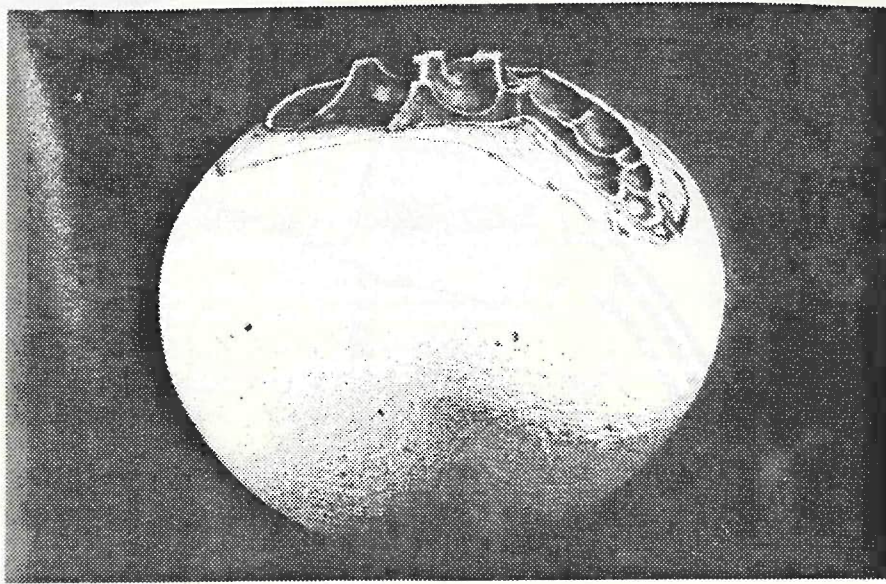
34. Sphere \$82



BRIAN GARTSIDE



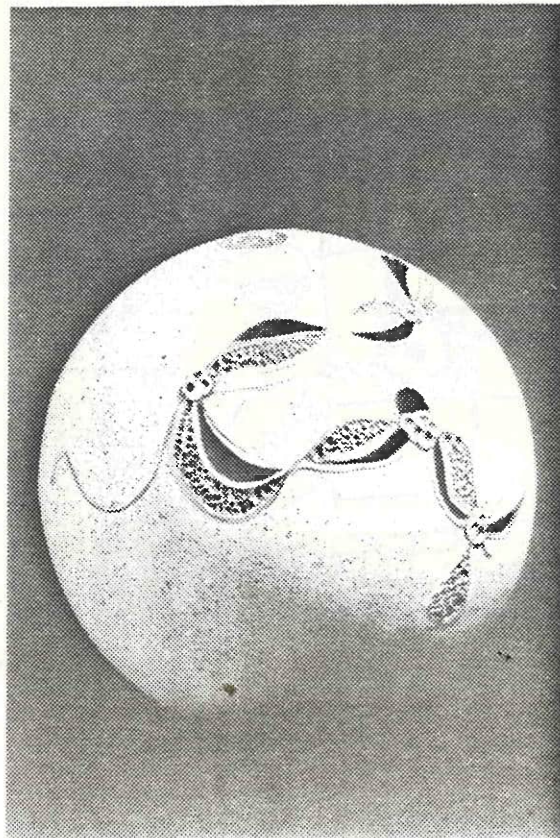
SUE KNOWLES



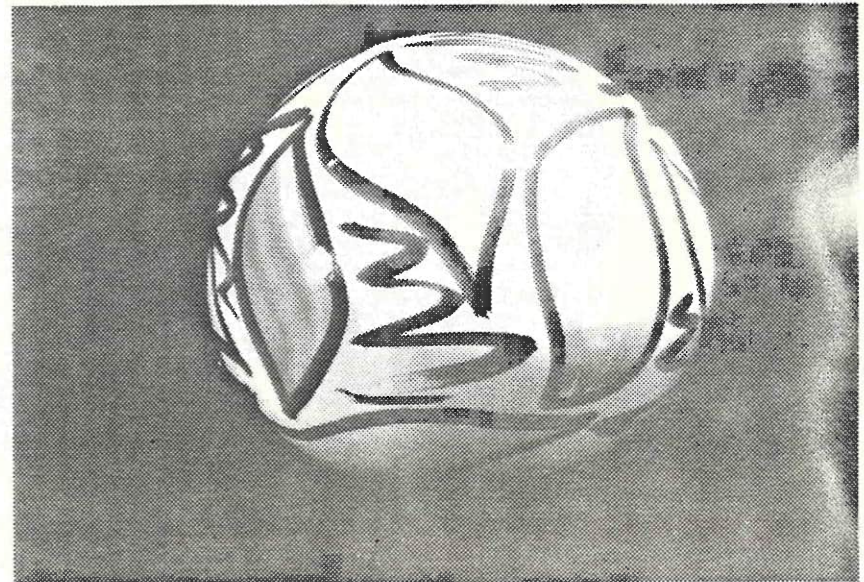
GITA BERZINS



PENNY EVANS

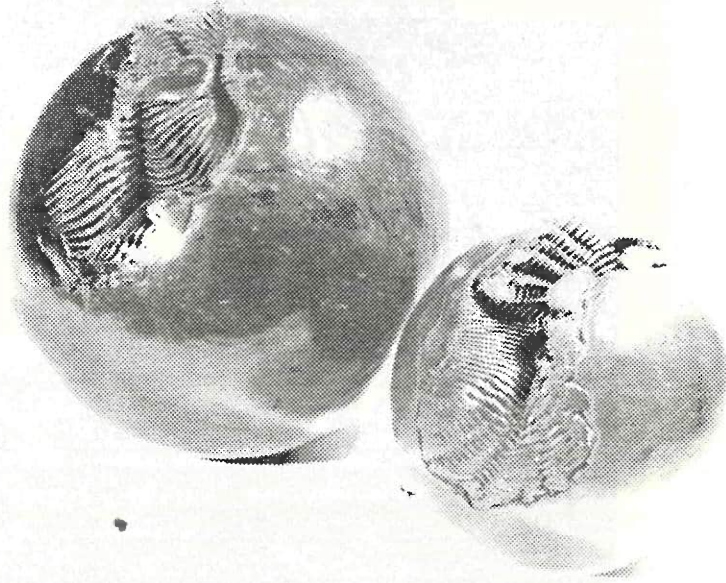
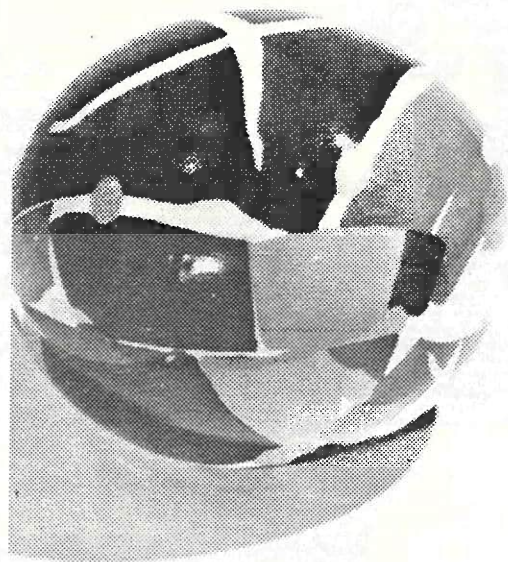


JULIE MAIR



MATT STAFFORD

JEANNIE
van der PUTTEN



HEATHER JAMES

PATTI MEADS:

- 35. Eroded Sphere. Sawdust Smoked \$250
- 36. Eroded Sphere. Sawdust Smoked \$175

MAUREEN HUNTER:

- 37. Large Sphere. Raku \$500
- 38. Set of Three, open Spheres. Raku \$175

JO MUNRO:

- 39. Burnished, Saggar Fired Sphere \$250
- 40. Burnished, Saggar Fired Sphere \$250

KERRY ROMBOUTS:

- 41. Rosetinted Atmosphere
Saggar Porcelain \$125
- 42. Rosetinted Atmosphere
Saggar Porcelain \$125

NELSON

OWEN BATEUP:

- 43. Raku Sphere \$65

JOHN CRAWFORD:

- 44. Worlds Apart \$440

VIC EVANS:

- 45. 'Sphish Sphere' \$45

PETER GIBBS:

- 46. Pit-fired Sphere \$56

DAVID GRIFFITHS:		
47. Raku		\$60
R. HEATHERBELL:		
48. 'Ginfaxi', 'Ginnir', 'Aegish' Set of Three Spheres		\$90
ROYCE McGLASHEN:		
49. Florets		\$247
DARYL ROBERTSON:		
50. Blood Boulder		\$250
<u>CHRISTCHURCH</u>		
A. APSE:		
51. Low Fired Pot. Stoneware		\$100
GITA BERZINS:		
52. Erosion Form		\$165
DAVID BROKENSHIRE:		
53. 'Convolute' I. Porcelain		\$48
SALLY CONNOLLY:		
54. Black Holes. Raku and Glass		\$120
FREDERIKA ERNSTEN:		
55. Vase		\$84
GAYNOR THACKER:		
56. 'Nor-West Arch'		\$58

ROSEMARY THOMPSON:		
57. Onawe Balls		\$200
ROBERT WAGONER:		
58. Gateway Stone		\$75
MARGARET RYLEY:		
59. Inferno. High fired electric outside, low fired inside		\$75

OTAGO

DAVID ATKINSON:		
60. Decorated Sphere. Stoneware fired in an electric kiln		\$55
ANN CLIFFORD:		
61. 'Whispering' Porcelain Mother of Pearl lustre		\$45

SOUTHLAND

HEATHER JAMES:		
62. Pair Black Spheres		\$95
PETER JOHNSON:		
63. Sphere. Terracotta		\$85
HEATHER MUNRO:		
64. 'Whimsical' Spheres. Stoneware (a) \$45 (b) \$45		\$90
ALAN YOUNG:		
65. 'Hundreds and Thousands'		\$80

The New Zealand Society of Potters thanks the following
for their assistance:

SOUTHLAND POTTERS ASSOCIATION
SOUTHLAND CERAMIC CLUB INC
SOUTHERN POTTERS INC
WYNDHAM CERAMIC CLUB
WAIAMAU POTTERS
WAIKAKA ARTS AND CRAFTS CLUB
ALEXANDRA POTTERS GROUP
WAIMUMU ARTS AND CRAFTS GROUP
OTAUTAU POTTERS
OFFICE EQUIPMENT
STAFF SOUTHLAND MUSEUM AND ART GALLERY
BAIN SHIPPING SERVICES LTD
SOUTHLAND COMMUNITY COLLEGE

We wish to thank Kristeen Lockett and the students on
the Visual Communications Course, Southland Community
College, for the high standard of the work submitted.

HEATHER MUNRO
Secretary Spheres Exhibition
Phone: 330984

