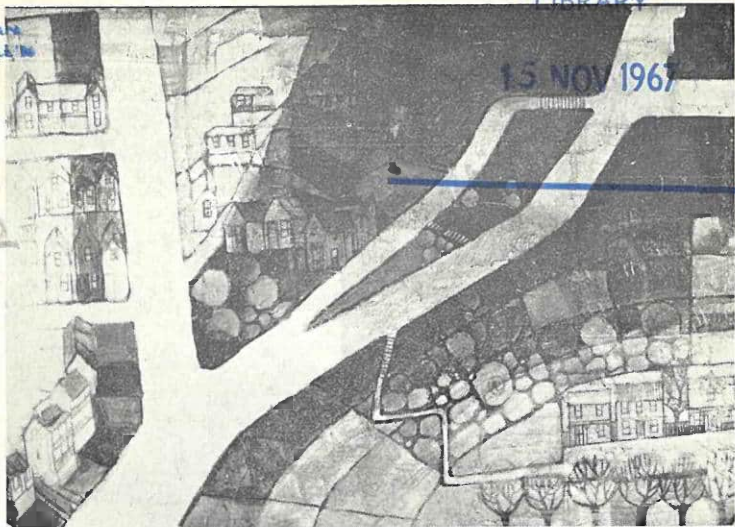


MACMILLAN
BROWN COLLECTION

N
5097
W4
N532
ac



Judith Trevelyan, No. 17

NEW ZEALAND ACADEMY OF FINE ARTS
CATALOGUE of ANNUAL EXHIBITION, 1967





Basil Honour, No. 29



Marie Ensor, No. 198

THE NEW ZEALAND ACADEMY
OF FINE ARTS



CATALOGUE
of the
ANNUAL EXHIBITION
1967

Opened by

THE HON. SIR ARTHUR TYNDALL, C.M.G.

on the evening of FRIDAY, 3rd NOVEMBER, 1967
at 8 o'clock

OPEN DAILY

from 4th NOVEMBER to 26th NOVEMBER

HOURS:

MONDAY TO SATURDAY 10 a.m. to 5 p.m.
SUNDAY 1 p.m. to 5 p.m.



ADMISSION — 10 cents

15 NOV 1967

**THE NEW ZEALAND ACADEMY
OF FINE ARTS**

Patron:

His Excellency the Governor-General
BRIGADIER SIR BERNARD FERGUSSON, G.C.M.G.,
G.C.V.O., D.S.O., O.B.E.

President:

R. J. Waghorn, M.A.

Vice-Presidents:

B. R. Webster
Ian Calder, F.N.Z.I.A., A.R.I.B.A.

Council:

Leonard Fielder,
B.A., Dip.Ed.

Joan Fanning
D.F.A. (Lond.)

Robin Kay, B.A.

Roy Cowan
R. B. Watson
M.A. (Cantab.)

C. T. Laugesen

Lorna M. Ellis

Hon. Treasurer:

C. J. Read, M.Com.

Hon. Auditor:

R. C. Morpeth, B.Com., F.I.A.N.Z., F.P.A.N.Z.

Secretary:

M. F. Harper

NOTE TO PURCHASERS

Intending Purchasers should apply to the attendant.

Works purchased will be available for collection from the Academy Gallery on Wednesday, 29th November.

REMOVAL OF EXHIBITS

Exhibitors are reminded that unsold works must be collected from the Western Goods Entrance on Tuesday, 28th November. Hours: 9 a.m.-noon, 2 p.m.—5 p.m.

MISS ALISON DUFF, A.S.T.C.

Miss Alison Duff, who has been chosen as our guest sculptor for this 1967 Autumn Exhibition, was born in Invercargill in 1914 and studied sculpture under Francis A. Shurrock at Canterbury College School of Art from 1932 to 1935.

She continued training at East Sydney Technical College (now called National Art School of Australia) where she gained a Sculpture Diploma with Honours in 1938.

For seven years she was Head of the Sculpture Department at Hobart Technical College, Tasmania, and was teaching at the East Sydney Technical College for five years.

Returning to New Zealand in 1952 she taught for two years at Auckland Girls' Grammar School.

In 1964 she was commissioned by the Queen Elizabeth II Arts Council for a portrait bust of Frank Sargeson.

In this exhibition there are six works of sculpture by Miss Alison Duff on display in Gallery 1.

CATALOGUE

GALLERY ONE

OIL PAINTINGS

	Price
OWEN R. LEE—	
1. Waiwera Coastline	\$42
2. Pine Trees at Long Bay	\$105
CEDRIC SAVAGE—	
3. Village on Poros, Greece	\$55
4. The Almond Tree	\$60
5. Street in Nafplion, Greece	\$60
6. Farm by the Sea, Kos	\$85
VIOLET WATSON—	
7. Tahuroa Farm	\$20
JOHN R. WILKINS—	
8. Susy	N.F.S.
PETER MORIARTY—	
9. Municipal Chambers, Arrowtown	\$35
10. Woolshed, Mt. Arum Station, Skippers	\$55
11. The First Self-Help Shop	\$50
12. Woodward Street, Wellington	\$50

LOUISE HENDERSON—
13. Atmosphere 1967 Price
\$150

STEWART MACLENNAN—
14. Lake Wanaka N.F.S.

JUDITH TREVELYAN—
15. Still Life (Acrylic) \$45
16. Sieverston Terrace (Acrylic) \$100
17. Wellington Streets (Acrylic) \$80
18. Portrait (Acrylic) \$45

ROBERT CHILVERS—
19. Late Summer \$150
20. Early Winter \$150

COLYN NICHOLLS—
21. Farm on the Inlet \$50
22. Cliffs, Tongaporutu \$50
23. Fishing from the Rocks \$50
24. Feeding Out \$55

CHARLES TOLE—
25. Still Life with Bottles \$50

BONNIE QUIRK—
26. Harbour City (P.V.A.) Price
\$60

BASIL HONOUR—
27. Crepuscule No. 1 (Acrylic) \$50
28. Autumn (Acrylic) \$60
29. Crepuscule No. 2 (Acrylic) \$60
30. Landscape \$60

ELVA BETT—
31. Towards Enlightenment—Part III \$100

V. K. HATCHER—
32. Force 8, Cook Strait \$120

NORMAN SCOTT—
33. Autumn Road \$40

CHARLES TOLE—
34. Industrial Buildings \$60
35. D.C. Day \$40

R. B. WATSON—
36. A Norfolk Village \$120
37. Three Dancers \$80
38. Winter Landscape, Kaikoura \$80
39. Winter Sunshine, Glenorchy \$150

	Price
JOHN R. WILKINS—	
40. Gilbert	N.F.S.
FRED O'NEILL—	
41. New Yorkers	\$36
LOUISE HENDERSON—	
42. London Painting, 1967	\$150
RUTH BROWNE—	
43. Painting	\$80
R. B. WATSON—	
44. The New Model	\$80
JOAN FANNING—	
45. Norway Street	\$60
KATHLEEN McKAY—	
46. Still Life	\$35
A. S. PATERSON—	
47. The Artist Himself	N.F.S.
GWEN CASHMORE—	
48. Red Camellias	\$30

	Price
BEVERLEY SHORE BENNETT—	
49. First Fetch a Pumpkin	\$60
JOAN FANNING—	
50. Still Life	\$60
51. Mother and Child	\$150
52. Woman in Blue	\$150
YVONNE PAINE—	
53. Pot Plants	\$18
RODGER HARRISON—	
54. Morning Departure	\$90

WATER-COLOURS

ARTHUR BRISCOE—	
55. The Gardener (Ink and Gouache)	\$40
56. The Merchant (Ink and Gouache)	\$40
SYDNEY HIGGS—	
57. Stratford Hill, Wangapeka Valley	\$40
58. Willows and Poplars, Tapawera	\$42
59. The Little Bay	\$32

ROBIN KAY—	Price
60. Mount Ngauruhoe	\$30
61. Rainy Day, Taurewa	\$50
62. North of Ruapehu	\$35
VY ELSOM—	
63. Flaxen Hair	N.F.S.
64. Lee Leng (Pastel)	\$40
NUGENT WELCH—	
65. An Overcast Day	\$55
ROY J. DICKISON—	
66. Coastal Showers, South Otago	\$65
STEWART MACLENNAN—	
67. Deep Waters, Lake Hawea	\$65
68. Ruby Island, Lake Wanaka	\$65
69. Landscape After Rain	\$65
70. Bathing Pool	\$75
71. Silver Light	\$65
72. Late Afternoon, Wanaka	\$65
NUGENT WELCH—	
73. The Leaning Poplar	\$46

ROY J. DICKISON—	Price
74. Farm Buildings and the Remarkables Queenstown	\$68
CEDRIC SAVAGE—	
75. Vrahassi, Old Crete	\$70
76. Old Crete	\$75
HEATHER FRANCIS—	
77. The Diggings, Naseby	\$28
DOROTHY SHORLAND—	
78. Winter Sunshine, Bellingden, N.S.W.	\$22
CARL T. LAUGESSEN—	
79. Christine	\$30
80. Birdwood Range, Coleridge	\$35
NUGENT WELCH—	
81. Silver and Green	\$50
W. S. WAUCHOP—	
82. Autumn Afternoon, Hawke's Bay	\$46
83. Looking South, Houghton Bay	\$45
JOY SIMMONS—	
84. Autumn at Wanaka	\$36
85. Kaikoura Coast	\$36

P. M. HUTCHISON—	Price
86. Sea Forms No. II (Gouache)	\$30
87. Sea Forms No. I (Gouache)	\$30

RAYMOND S. RAMSAY—	
88. Flight (Gouache)	\$30

R. J. WAGHORN—	
89. Taurewa Landscape	\$30

AVIS HIGGS—	
90. Depth of the Bush	\$36
91. By the River, I	\$34
92. Hill at Hinekura	\$34
93. Dock, etc.	\$30

BETTY EATON—	
94. House in the Trees	\$20

R. J. WAGHORN—	
95. Rock Fantasy, Ruapehu	\$40
96. From Ruapehu's flanks	\$40

AVIS HIGGS—	Price
97. By the River, II	\$30

ROY A. STEER—	
98. Country Road, Greytown	\$40
99. St. Luke's, Greytown	N.F.S.

DUDLEY C. WALKER—	
100. Old Shed, Kaikoura	\$31.50

GWEN KNIGHT—	
101. The Stream at Te Marua	\$38

ELISE MOURANT—	
102. Rangitikei River at Mangaweka	\$16
103. Still Life with Fruit	\$18

C. M. PATERSON—	
104. Rock Outcrop	\$30

GEORGE PACKWOOD—	
105. Demolition of a Landmark	N.F.S.

JOHN RUNDLE—	
106. Cupola Stream	\$40
107. Mt. Hopeless	\$40

GALLERY TWO

	Price
R. E. JACKSON—	
108. In the Builder's Yard (Oil)	\$25
SYLVIA LOVELL—	
109. Evening, Kapiti (Water-colour)	\$36
RAE VAN'T HOF—	
110. Inglewood, Taranaki (Oil)	\$30
DIANA M. WATSON—	
111. Horn Player (Oil)	N.F.S.
W. F. MOORE—	
112. Fading Light, Upper Rakaia (Oil)	\$73.50
AUSTEN DEANS—	
113. Sky Study (Oil)	\$58
114. Rangitata (Near the Sky) (Oil)	\$750
ELVIE JONES—	
115. Prelude (Oils)	\$60
PHYLLIS SIMMONDS—	
116. Blue-gum Bark (Oil)	\$30

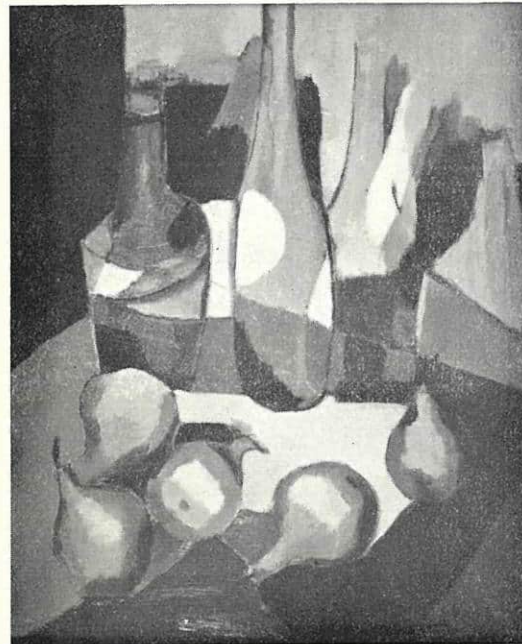
	Price
IRVINE MAJOR—	
117. Light Penetrating Water (P.V.A. & acrylic)	\$90
FLORENCE LUXFORD—	
118. Sound Rhythm (Oil)	\$40
ELVIE JONES—	
119. Landscape (Oils)	\$30
COLETTE RANDS—	
120. Line and Space (Oil)	\$50
V. K. HATCHER—	
121. Desolate Coast (Oil)	\$96
GASTON DE VEL—	
122. Tamarillos (Oil)	\$80
J. N. FORSEY—	
123. The Elk (Oil)	\$35
TOM ESPLIN—	
124. Windy City (Oil)	\$50
IRVINE MAJOR—	
125. Marine Series No. 6 (Oil)	\$45
126. Growth Series No. 9 (Oil)	\$45
127. Moving Figure (Oil)	\$70

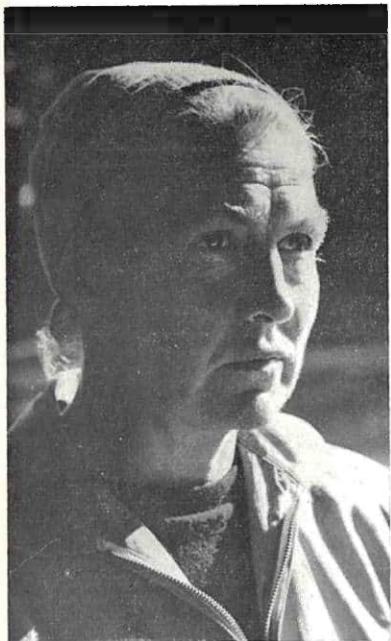
	Price
NAN MERCER—	
128. First School Day (Oil)	\$24
QUEENIE AITKEN—	
129. City Fringe (Acrylic)	\$32
JAN VAN DER STERREN—	
130. Post Office, Irschen, Austria (Oil)	\$64
DOUGLAS MacGREGOR—	
131. Autumn Evening (Oil)	\$36
RODGER HARRISON—	
132. Cathedral (Oil)	\$60
VY ELSOM—	
133. Self Portrait (Oil)	N.F.S.
ROBERT CHILVERS—	
134. Zorba's Dance (Fibreglass Metallic Resin)	\$300
135. Tournament (Fibreglass, Metallic & Acrylic Resin)	\$80
MAVIS OSBORNE—	
136. Director (Oil)	\$20

	Price
FRED R. ALEXANDER—	
137. Breaker Bay (Oil)	\$20
JOHN R. WILKINS—	
138. Trevor J. Reynolds (Oil)	N.F.S.
NAN MERCER—	
139. Cooling Off (Water-colour)	\$16
JOHN LEGGOTT—	
140. Woolshed near Inglewood (Oil)	\$16
R. E. JACKSON—	
141. A. Young Boy (Oil)	\$21
142. Mr. J. H. Fyson (Oil)	N.F.S.

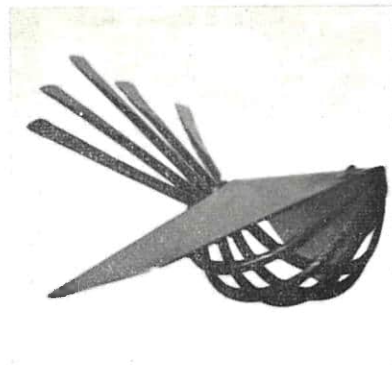
GALLERY THREE

ELIZABETH POOLE—	Price
143. Still Life (Oil)	\$16
OWEN R. LEE—	
144. Polynesian Still Life (Oil)	\$42
ELMA ATHEA—	
145. Carol (Oil)	N.F.S.
VALERIE BEERE—	
146. Irene Wharry (Oil)	N.F.S.
JOY SERVICE—	
147. A Tree Grows in Willis Street (Oil)	\$24
CARL T. LAUGESSEN—	
148. Seascape, Owhiro Bay (Oil)	\$28
LEONARD FIELDER—	
149. Beneath the Pines, Wharemoana (Oil)	\$40
150. Sunlight and Stream, Te Marua (Oil)	\$60
151. Ruamahanga River, near Gladstone (Oil)	\$60
CARL T. LAUGESSEN—	
152. Pastoral, Blackburn, H.B. (Oil)	\$42





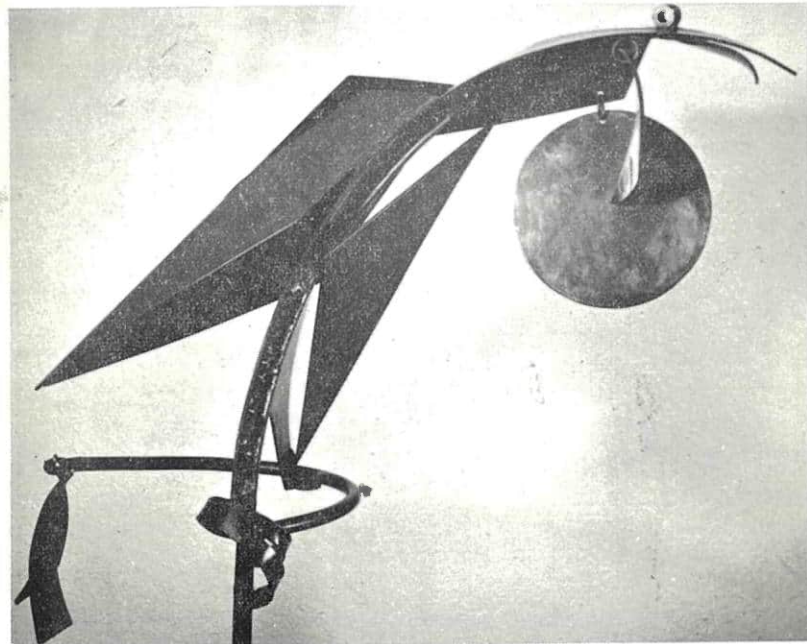
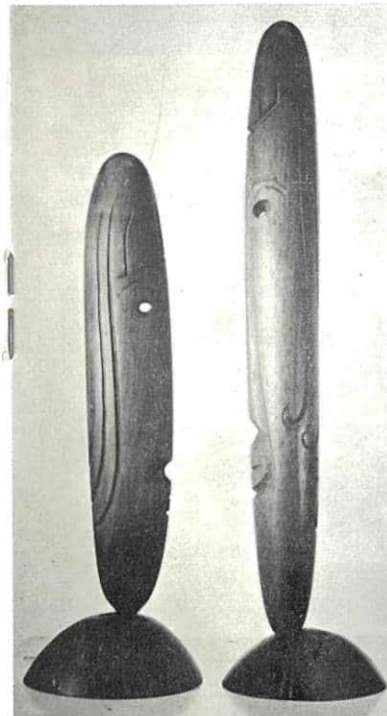
Miss Alison Duff



No. 282 Alison Duff

GUEST SCULPTOR — ALISON DUFF

Nos. 279 and 280 Alison Duff



No. 281 Alison Duff

No. 278 Alison Duff



Judith Trevelyan,
No. 18 'Portrait'



Ida H. Carey, No. 188 'Armo'

	Price
QUEENIE AITKEN—	
153. Whiteman's Valley (Acrylic)	\$25
JOYCE McMURTRY—	
154. Reluctant Sea Horses (Oil)	\$40
GWEN CASHMORE—	
155. Sheltered Stream, Kaitoke (Oil)	\$32
156. Upper Hutt from Akatarawa (Oil)	\$30
157. Spring Willows, Trentham (Oil)	\$32
BERNICE SMART—	
158. Old Pine, Whiteman's Valley (Oil)	\$25
SYBIL LANE—	
159. Daisies (Oil)	\$16
JAN VAN DER STERREN—	
160. Main Street, Valldemosa, Mallorca (Oil)	\$58
ANNE CHARMAN—	
161. Sunflowers (5), (Oil)	\$32
QUEENIE AITKEN—	
162. Hanmer Farm (Acrylic)	\$42
LOUISE NATHAN—	
163. Penny (Oil)	\$44

NANETTE PAINTON— Price
164. Retired (Oils) \$17

MARJORIE NAYLOR—

165. Mt. Arthur, Glen-rae Road, Tapawera (Oil) \$70

GASTON DE VEL—

166. Anemones (Oil) \$53

167. Gladiolias (Oil) \$70

168. Anemones and Daffodils (Oil) \$65

169. Mount Ruapehu (Oil) \$72

LOUISE NATHAN—

170. Head Lines (Oil) \$44

171. Half Caste Woman (Oil) \$44

VIOLET WATSON—

172. Trees in Cloud Shadow (Oil) \$50

JOAN LINDSEY—

173. Flower Study (Oil) \$25

R. B. WATSON—

174. Early Morning, North Canterbury (Oil) \$100

JOAN FANNING—

175. Blinman Landscape, S. Australia (Oil) \$60

HELEN STEWART— Price
176. Graham, Rocky and Me (Oil) \$100

A. S. PATERSON—

177. Life Class (Oil) \$80

MARJORIE BEUKES—

178. Wildlife Refuge, Pauatahunui (Oil) \$16

W. S. WAUCHOP—

179. The Old Totara, Moonshine (Oil) \$75

CHARLES McKENZIE—

180. Walter Peak from the Twelve Mile (Oil) \$53

W. F. MOORE—

181. Winter's Scene, Arthur's Pass (Oil) \$84

MARGARET WATERS—

182. Maori Point, Lake Okataina (Oil) \$52

A. H. MAUND—

183. The East Coast near Tolaga Bay (Oil) \$40

GALLERY FOUR

	Price
ESTHER COWLES—	
184. Old Wellington (Oil)	\$16
IDA H. CAREY—	
185. Hane Wrihana (Oil)	N.F.S.
HELEN STEWART—	
186. Z CARS (Oil)	\$40
JULIA B. LYNCH—	
187. Mr. P. F. Trott (Oil)	N.F.S.
IDA H. CAREY—	
188. Armo (Oil)	N.F.S.
RODGER HARRISON—	
189. Island Bay (Oil)	\$50
JULIA B. LYNCH—	
190. Sharon (Oil)	N.F.S.
H. TAGG—	
191. Picnic Spot (P.V.A.)	\$25
192. The Pink Umbrella (P.V.A.)	\$32

	Price
TUI ZANETICH—	
193. Before (Enamel and Pencil)	\$10
J. N. FORSEY—	
194. Double Burden (Oil)	\$65
COLETTE RANDS—	
195. Figure 1 (Oil)	\$45
ARTHUR E. DAGLEY—	
196. Snowbound (P.V.A.)	\$31
197. Back Country Station No. 3 (Oil)	\$31
MARIE ENSOR—	
198. Winter Landscape 2 (Oil)	\$25
FRED O'NEILL—	
199. Hillside Suburb (Oil)	\$36
HELEN STEWART—	
200. Afternoon (Oil)	\$80
GWEN KNIGHT—	
201. The Willow Tree (Oil)	\$45
202. Autumn, Lake Taupo (Oil)	\$65

	Price
BILL EMSLEY—	
203. Egmont Slopes (Acrylic)	\$20
R. J. WAGHORN—	
204. Forms in Light No. 1 (Oil)	\$30
B. C. MARSOM—	
205. The Division of Time and Matter (Oil)	\$50
CLAIRE JENNINGS—	
206. Carnival Clown III (Oil)	\$40
TUI ZANETICH—	
207. Fish Tank (Oil)	\$20
ROB TAYLOR—	
208. Nude on Blue Bed No. 3 (Oil)	\$35
KATHLEEN McKAY—	
209. Evolvment (Oil and Acrylic)	\$25
ISABEL BRATHWAITE—	
210. Northland Landscape (Mixed Med.)	\$40
MARIE ENSOR—	
211. Winter Landscape I (Oil)	\$30

	Price
CLAIRE JENNINGS—	
212. Conversation in Japanese (Oil)	\$50
BASIL HONOUR—	
213. Abstract Painting 2/66 (Acrylic)	\$60

GALLERY FIVE

	Price
JAN VAN DER STERREN—	
214. Darkie Allom (Pencil)	N.F.S.
FLORENCE LUXFORD—	
215. Flower Drum Girl (Water-colour)	\$40
FREDERICK KATELEY—	
216. Togetherness (Scraperboard)	\$35
CHERIE McLAUCLAN—	
217. Homeward Bound (Ink and Wash)	\$15
HILDA WALKER—	
218. Old Camogli, Italy (Ink)	\$14
LEAH BOYCE—	
219. Harbour Lights (Gouache)	\$23
J. N. FORSEY—	
220. Tartary Stallions (Ink)	\$22
SYLVIA LOVELL—	
221. Passing Storm (Water-colour)	\$40
HEATHER GARNETT—	
222. Happy Family (Scraperboard)	N.F.S.

	Price
FREDERICK KATELEY—	
223. Sam (Scraperboard)	\$14
POH LIN LIEW—	
224. Squirrel (Water-colour)	\$16
EANA JEANS—	
225. In a Ferny Gully (Water-colour)	\$40
ROB TAYLOR—	
226. Flower Arrangement (Ink)	\$10
HEATHER GARNETT—	
227. Bird Family (Scraperboard)	N.F.S.
VY ELSOM—	
228. T. R. Pogson of the Middle Temple (Conte)	N.F.S.
E. S. HOPE—	
229. Wellington Harbour (Water-colour)	\$40
KATHERINE McDOUGALL—	
230. Mr. John Hassall Teaches (Water-colour)	N.F.S.
BASIL REGISTER—	
231. Still Life (Water-colour)	\$28

WILLIAM JENKS—	Price
232. Portrait of A.L.W. (Water-colour)	\$18
233. Standing Nude (Pen Drawing)	\$20
JOAN GRIGGS—	
234. Rainy Afternoon, Mourea (Water-colour)	\$20
HEATHER GARNETT—	
235. Playful (Scraperboard)	N.F.S.
236. Design in Industry (Scraperboard)	N.F.S.
OLGA COX—	
237. Hill Highway (Gouache)	\$16
JARKA LORENC—	
238. Fantasy in Blue (Water-colour)	\$17
CHERIE McLAUCLAN—	
239. Way of Life (Poster Paint)	\$16
VY ELSOM—	
240. The Red Cap (Water-colour)	\$40
POH LIN LIEW—	
241. Sparrows (Water-colour)	N.F.S.

VALERIE BARNAO—	Price
242. Beach Scene (Water-colour)	\$16
SHONA McFARLANE—	
243. St. Clair Coast (Ink)	\$40
HILDA WALKER—	
244. Cheese Market, Alkmaar (Water-colour and Wax)	\$16
V. K. HATCHER—	
245. Paint Job (Water-colour)	\$36
CHERIE McLAUCLAN—	
246. Night Time (Poster Paint)	\$16
JOHN MAGURK—	
247. Last Light, Castlepoint (Water-colour)	\$36
STELLA GIBBS—	
248. Winter Leaves (Water-colour)	\$32
249. Twiggy (Water-colour)	\$32
RONA ALEXANDER—	
250. Bellbird (Water-colour)	\$35

	Price
DIANA SQUIRES—	
251. The First Schoolhouse, Paraparaumu (Water-colour)	\$20
NAN MERCER—	
252. Drying Off (Water-colour)	\$28
JOHN CASTLE—	
253. Momentary Inactivity (Water-colour)	\$77
MARGARET RHODES—	
254. Golden Bay (Water-colour)	\$32
RAYMOND S. RAMSAY—	
255. Snow Brown (Water-colour)	\$50
DUDLEY C. WALKER—	
256. Conversation (Water-colour)	\$31.50
WILLIAM BARKE—	
257. The Lake (Water-colour)	\$20
MARGARET RHODES—	
258. Thoroughbred Hunters, Shrewsbury (Water-colour)	\$38
VIVIAN MANTHEL—	
259. Dappled Sunlight (Water-colour)	N.F.S.

	Price
TUI McLAUCHLAN—	
260. Winter (Water-colour)	\$16
261. Snow in Southland (Water-colour)	\$16
KATHERINE McDOUGALL—	
262. Across Cramner Square (Water-colour)	N.F.S.
ERIC FLEGG—	
263. Nocturne (Water-colour)	\$21
WILLIAM BARKE—	
264. Tararua Foothills (Water-colour)	\$20
ELISABETH HARPER—	
265. Nude (Water-colour)	\$20

MINIATURES

NORAH GLEED—	
266. Lonely Pine (Needlework)	\$20
267. The Restless Tide (Needlework)	\$25
268. Halcyon Seas (Needlework)	N.F.S.
MYRTLE McDONALD—	
269. Yellow Roses (Water-colour)	\$11
270. N.Z. Eidelweiss (Water-colour)	\$11
271. Mixed Spray (Water-colour)	\$15

JOAN WALMSLEY—		Price
272.	Flowers (Needle Paint)	\$12
JOY PARKER—		
273.	Moss Roses (Water on Ivorine)	\$50
274.	The Basket Weaver (Water on Ivory)	\$40
275.	La Sylphide (Water on Ivory)	\$44
276.	The Potter's Art (Water on Ivory)	\$56

SCULPTURE

GALLERY ONE

ALISON DUFF—		Price
277.	Cat (Bronze)	\$60
278.	Hillary (Bronze)	\$500
279.	Sun (Totara)	N.F.S.
280.	Moon (Totara)	N.F.S.
281.	Tui (Steel)	N.F.S.
282.	Fantail (Steel)	N.F.S.

INDEX

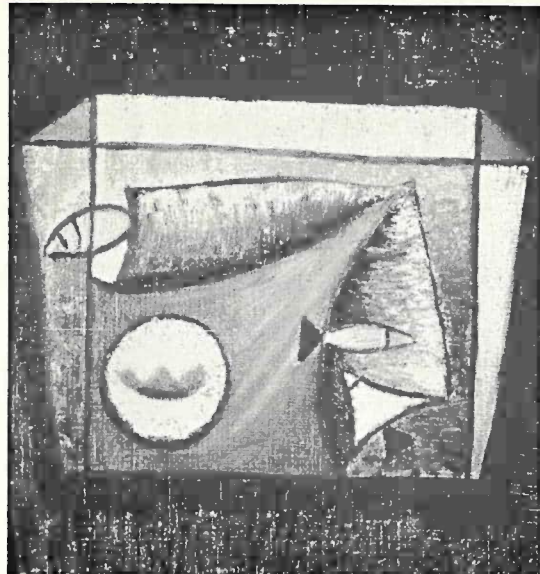
AITKEN, QUEENIE	129, 153, 162
ALEXANDER, FRED R.	137
ALEXANDER, RONA	250
ATHEA, ELMA	145
BARKE, WILLIAM	257, 264
BARNAO, VALERIE	242
BEERE, VALERIE	146
BENNETT, BEVERLEY SHORE	49
BETT, ELVA	31
BEUKES, MARJORIE	178
BOYCE, LEAH	219
BRATHWAITE, ISABEL	210
BRISCOE, ARTHUR	55, 56
BROWNE, RUTH	43
CAREY, IDA H.	185, 188
CASHMORE, GWEN	48, 155, 156, 157
CASTLE, JOHN	253
CHARMAN, ANNE	161
CHILVERS, ROBERT	19, 20, 134, 135
COWLES, ESTHER	184
COX, OLGA	237
DAGLEY, ARTHUR E.	196, 197
DEANS, AUSTEN	113, 114
DE VEL, GASTON	122, 166, 167, 168, 169
DICKISON, ROY J.	66, 74
DUFF, ALISON	277, 278, 279, 280, 281, 282
EATON, BETTY	94
ELSOM, VY	63, 64, 133, 228, 240
EMSLEY, BILL	203
ENSOR, MARIE	198, 211
ESPLIN, TOM	124

FANNING, JOAN	45, 50, 51, 52, 175
FIELDER, LEONARD	149, 150, 151
FLEGG, ERIC	263
FORSEY, J. N.	123, 194, 220
FRANCIS, HEATHER	77
GARNETT, HEATHER	222, 227, 235, 236
GIBBS, STELLA	248, 249
GLEED, NORAH	266, 267, 268
GRIGGS, JOAN	234
HARPER, ELISABETH	265
HARRISON, RODGER	54, 132, 189
HATCHER, V. K.	32, 121, 245
HENDERSON, LOUISE	13, 42
HIGGS, AVIS	90, 91, 92, 93, 97
HIGGS, SYDNEY	57, 58, 59
HONOUR, BASIL	27, 28, 29, 30, 213
HOPE, E. S.	229
HUTCHISON, P. M.	86, 87
JACKSON, R. E.	108, 141, 142
JEANS, EANA	225
JENKS, WILLIAM	232, 233
JENNINGS, CLAIRE	206, 212
JONES, ELVIE	115, 119
KATELEY, FREDERICK	216, 223
KAY, ROBIN	60, 61, 62
KNIGHT, GWEN	101, 201, 202
LANE, SYBIL	159
LAUGESSEN, CARL	79, 80, 148, 152
LEE, OWEN R.	1, 2, 144
LEGGOTT, JOHN	140
LIEW, POH LIN	224, 241

LINDSEY, JOAN	173
LORENC, JARKA	238
LOVELL, SYLVIA	109, 221
LUXFORD, FLORENCE	118, 215
LYNCH, JULIA B.	187, 190
MAGURK, JOHN	247
MAJOR, IRVINE	117, 125, 126, 127
MANTHELL, VIVIAN	259
MARSOM, BRIAN C.	205
MAUND, A. H.	183
MERCER, NAN	128, 139, 252
MOORE, W. F.	112, 181
MORIARTY, PETER	9, 10, 11, 12
MOURANT, ELISE	102, 103
McDONALD, MYRTLE	269, 270, 271
McDOUGALL, KATHERINE	230, 262
McFARLANE, SHONA	243
MacGREGOR, DOUGLAS	131
McKAY, KATHLEEN	46, 209
McKENZIE, CHARLES	180
McLAUHLAN, CHERIE	217, 239, 246
McLAUHLAN, TUI	260, 261
MACLENNAN, STEWART	14, 67, 68, 69, 70, 71, 72
McMURTRY, JOYCE	154
NATHAN, LOUISE	163, 170, 171
NAYLOR, MARJORIE	165
NICHOLLS, COLYN	21, 22, 23, 24
O'NEILL, FRED	41, 199
OSBORNE, MAVIS	136
PACKWOOD, GEORGE	105
PAINE, YVONNE	53
PAINTON, NANETTE	164

PARKER, JOY	273, 274, 275, 276
PATERSON, A. S.	47, 177
PATERSON, C. M.	104
POOLE, ELIZABETH	143
QUIRK, BONNIE	26
RAMSAY, RAYMOND S.	88, 255
RANDS, COLETTE	120, 195
REGISTER, BASIL	231
RHODES, MARGARET	254, 258
RUNDLE, JOHN	106, 107
SAVAGE, CEDRIC	3, 4, 5, 6, 75, 76
SCOTT, NORMAN	33
SERVICE, JOY	147
SHORLAND, DOROTHY	78
SIMMONDS, PHYLLIS	116
SIMMONS, JOY	84, 85
SMART, BERNICE	158
SQUIRES, DIANA	251
STEER, ROY A.	98, 99
STEWART, HELEN	176, 186, 200
TAGG, H.	191, 192
TAYLOR, ROB	208, 226
TOLE, CHARLES	25, 34, 35
TREVELYAN, JUDITH	15, 16, 17, 18
VAN DER STERREN, JAN	130, 160, 214
VAN'T HOF, RAE	110
WAGHORN, R. J.	89, 95, 96, 204
WALKER, DUDLEY C.	100, 256
WALKER, HILDA	218, 244
WALMSLEY, JOAN	272

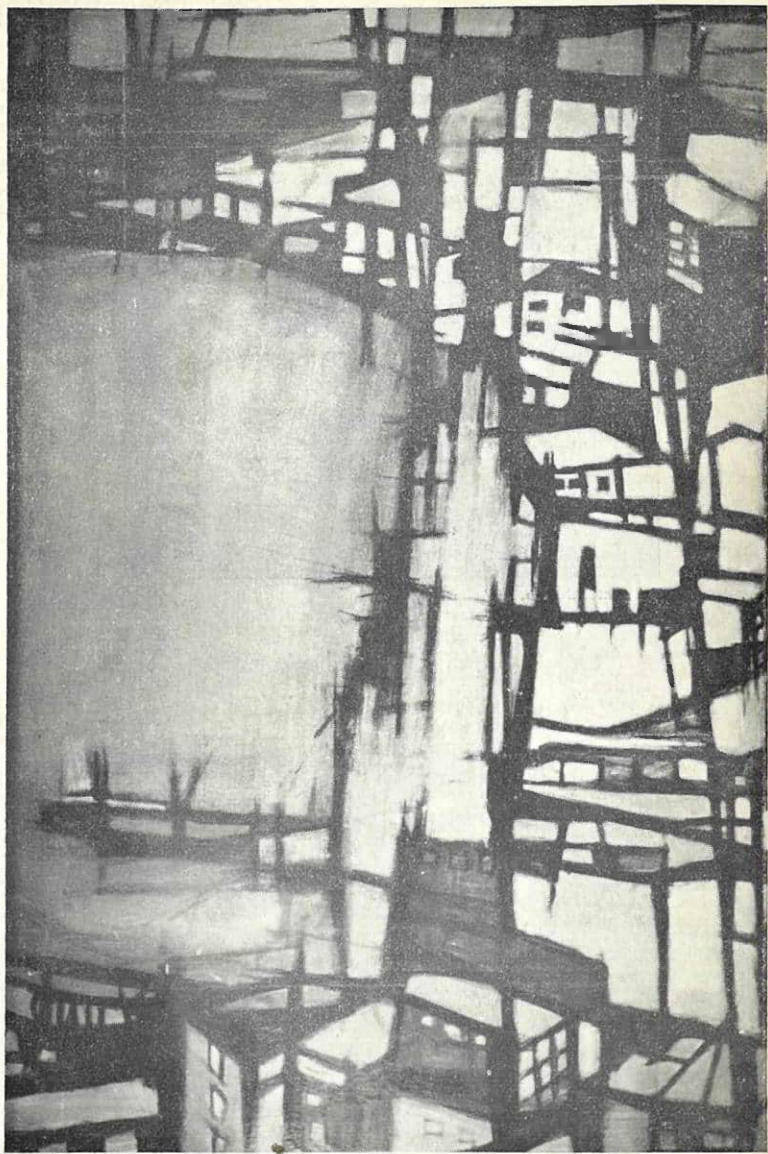
WATERS, MARGARET	182
WATSON, DIANA M.	111
WATSON, R. B.	36, 37, 38, 39, 44, 174
WATSON, VIOLET	7, 172
WAUCHOP, W. S.	82, 83, 179
WELCH, NUGENT	65, 73, 81
WILKINS, JOHN R.	8, 40, 138
ZANETICH, TUI	193, 207



Tui Zanetich, No. 207



Peter Moriarty, No. 11



Bonnie Quirk, No. 26